



Arodene Road, Brixton, SW2

2 bedroom flat to let

£507 Per Week

Part furnished

Property Details

A stunning, bright two bedroom flat with roof terrace - situated just around an eight minute walk from Brockwell Park. This beautiful property comprises two good sized double bedrooms - one of which leads onto your own private roof terrace ideal for the coming summer months, a sleek open plan kitchen and reception area and a modern family sized bathroom. Living here you'll be in equal distance of both Herne Hill and Brixton, you'll be around a fourteen minute walk from Brixton underground and everything that Brixton high street has to offer in terms of chained and local shops, bars and restaurants.

Features

- TwoDouble bedrooms
- Private roof terrace
- Open plan
- Close to Brockwell Park
- Close to transport links

Council tax band D EPC rating C (75)



Arodene Road, Brixton, SW2



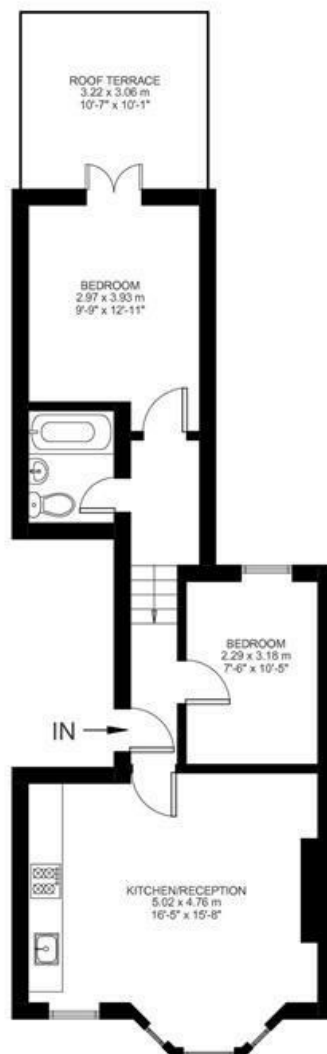
2 Bed flat

Approx internal area:

537 sqft 50 sqm

While we do try our very best, floor plans are produced as a guide only and we take no responsibility for the precise accuracy with which any property is represented

Arodene Road



First Floor



Arodene Road, Brixton, SW2

