



Kellett Road, Brixton, SW2

2 bedroom flat - conversion for sale

£499,950

Leasehold

Property Details

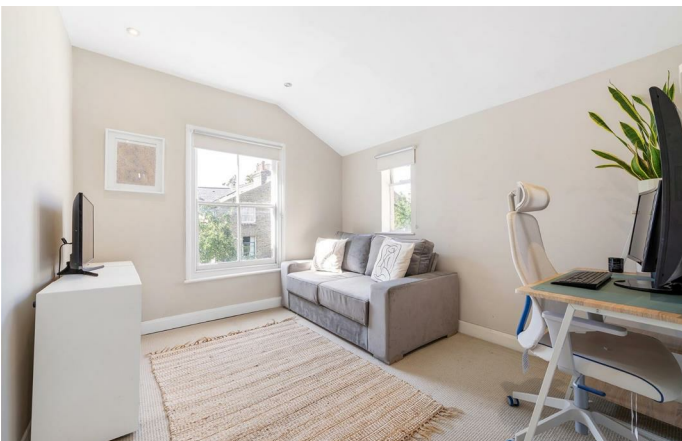
A beautifully presented two double bedroom flat arranged over the top floors of a handsome Victorian townhouse, just moments from central Brixton and Brockwell Park. Lovingly refurbished by the current owners, the property features a stylish new kitchen with integrated appliances, built-in wardrobes, restored original floorboards, and tasteful décor throughout. The bright and spacious open-plan reception is flooded with natural light via large sash windows and boasts high ceilings, creating a perfect space to relax or entertain. Both double bedrooms are well-proportioned and set apart for privacy, with the principal offering bespoke storage and the second enjoying dual-aspect views, ideal as a guest room, office or nursery. A modern bathroom with subway tiles and a bath with overhead shower completes the space. Located on a quiet, friendly street moments from Brixton Village, POP Brixton, and The Ritzy, the flat offers excellent transport links via the Victoria Line, Northern Line, Overground and Thameslink, with Herne Hill and Clapham also close by.

Council tax band C

EPC rating (null)

Features

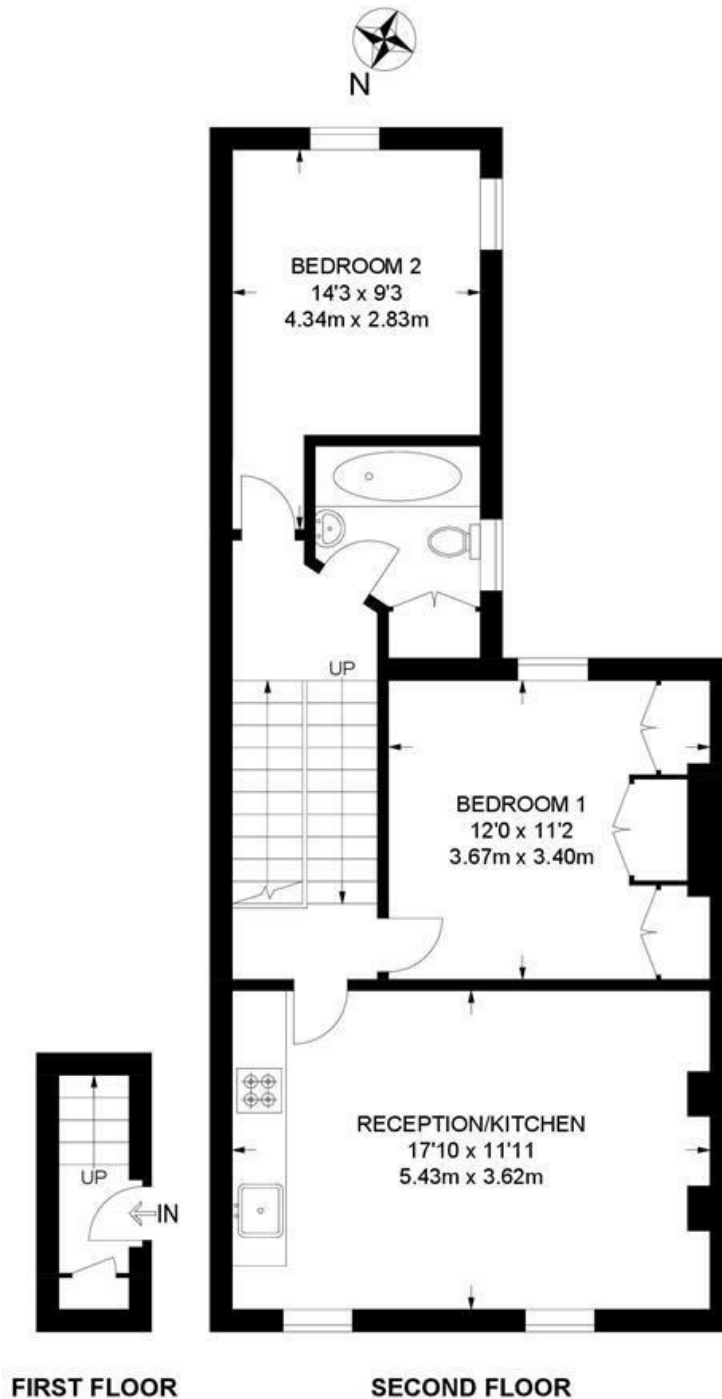
- Two double bedrooms
- Victorian conversion
- Occupying the entire top floor
- Well-presented throughout
- Bright and airy ambience
- Sought-after street close to transport links
- Central Brixton on the doorstep
- Herne Hill a ten-minute stroll
- Brockwell Park nearby
- Chain-free



Kellett Road, Brixton, SW2

Kellett Road, SW2
2 Bedroom Flat

APPROXIMATE GROSS INTERNAL AREA: 628 SQ FT / 58 SQ M



While we try our very best, floor plans are produced as a guide only and we take no responsibility for the precise accuracy with which any property is represented.

Kellett Road, Brixton, SW2

