



Leander Road, Brixton, SW2

2 bedroom flat to let

£485 Per Week

Furnished

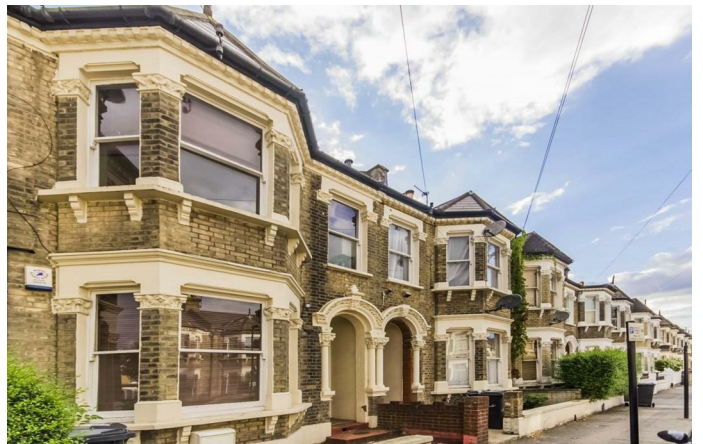
Property Details

This is a wonderfully presented first floor two bed flat - bright, very spacious and on one of the most sought after streets in this conservation area. The property offers an open plan kitchen/reception, two double bedrooms and a shared family bathroom which has been very well maintained. Very close to Brockwell park, to the new Sainsbury's supermarket and the great pubs and restaurants around. It is also a short walk to Brixton and all that it has to offer which makes this a very good all-round package.

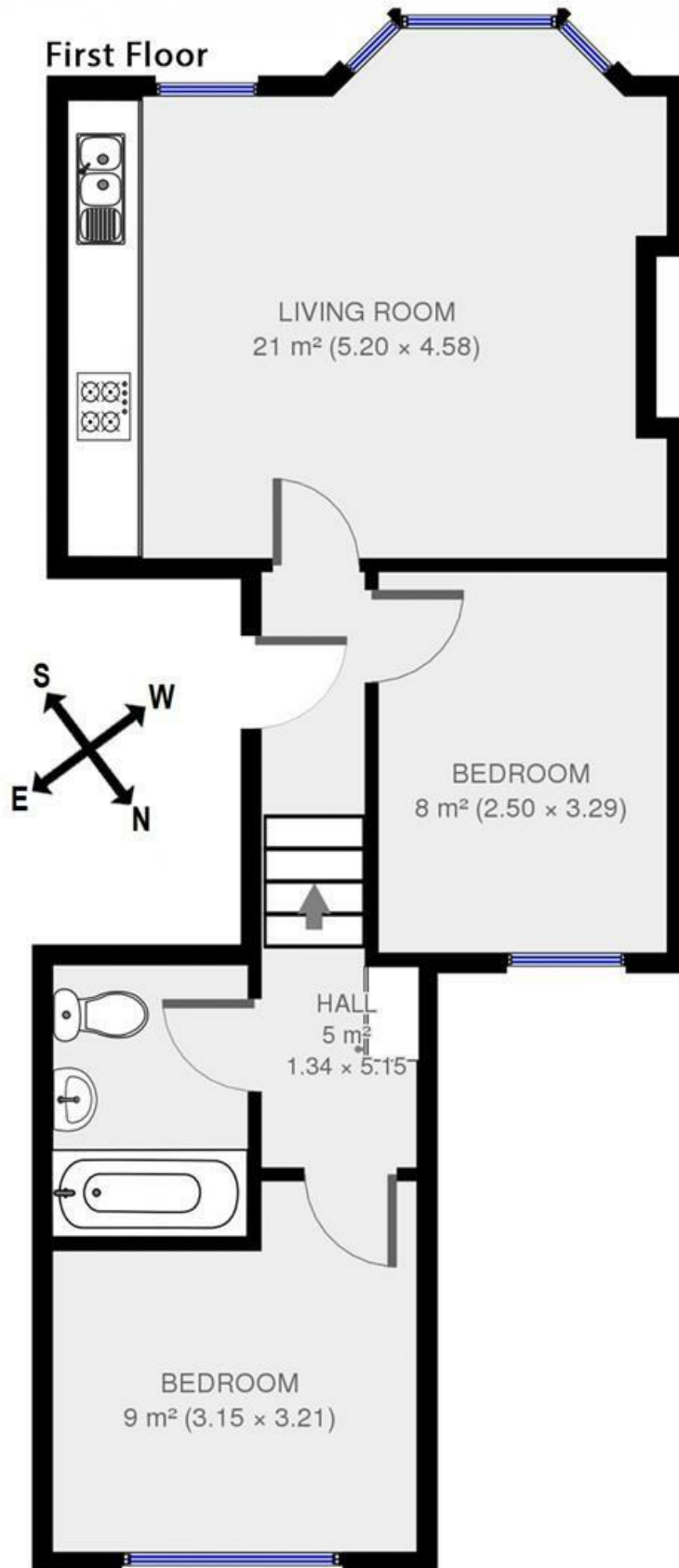
Features

- 2 Double Bedrooms
- Light and Airy
- Ideal Location
- Close to Transport Links
- Victorian Conservation

Council tax band C EPC rating C (69)



Leander Road, Brixton, SW2



2 bed flat.

Approx internal area:

538sqft 50sqm

While we do try our very best, floor plans are produced as a guide only and we take no responsibility for the precise accuracy with which any property is represented

Leander Road

Leander Road, Brixton, SW2

