



**Railton Road, Herne Hill, SE24**

3 bedroom flat to let

**£623 Per Week**

Part furnished

## Property Details

Keating Estates are delighted to present this stunning three bedroom split level apartment, offering an impressive footprint of over 900 square feet and a beautifully presented open-plan living space, ideally located moments from central Brixton and with Brockwell Park quite literally on the doorstep.

Set within a well-maintained building and boasting a private garden, this larger-than-average apartment is arranged over two levels, with a thoughtful layout designed to maximise light, space, and functionality.

The heart of the home is the expansive open plan reception room, a truly impressive space flooded with natural light. Stylish modern wood flooring flows throughout, enhancing the sense of space and cohesion. This elegant area offers ample room to relax, dine, and entertain and seamlessly extends out to a private garden perfect for alfresco dining or unwinding in the warmer months. The sleek kitchen is finished in soft grey tones with high quality cabinetry and worktops, complete with integrated appliances and plenty of storage, making it a highly functional and inviting space for cooking and hosting alike.

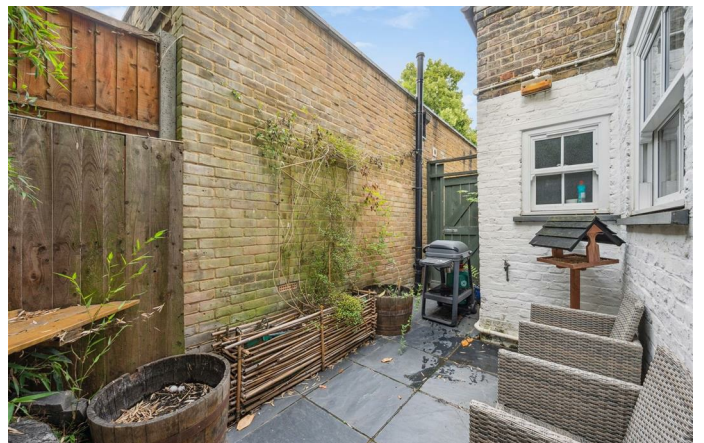
Downstairs, both double bedrooms are tucked away on the lower ground floor providing a peaceful retreat from the social spaces above. Both bedrooms are spacious, while the third room

## Features

- Two bedroom
- Study room
- Split level
- Open Plan
- Garden
- Tastefully decorated throughout
- Close to Brockwell Park
- Stones throw from Central Brixton

Council tax band C      EPC rating C (72)



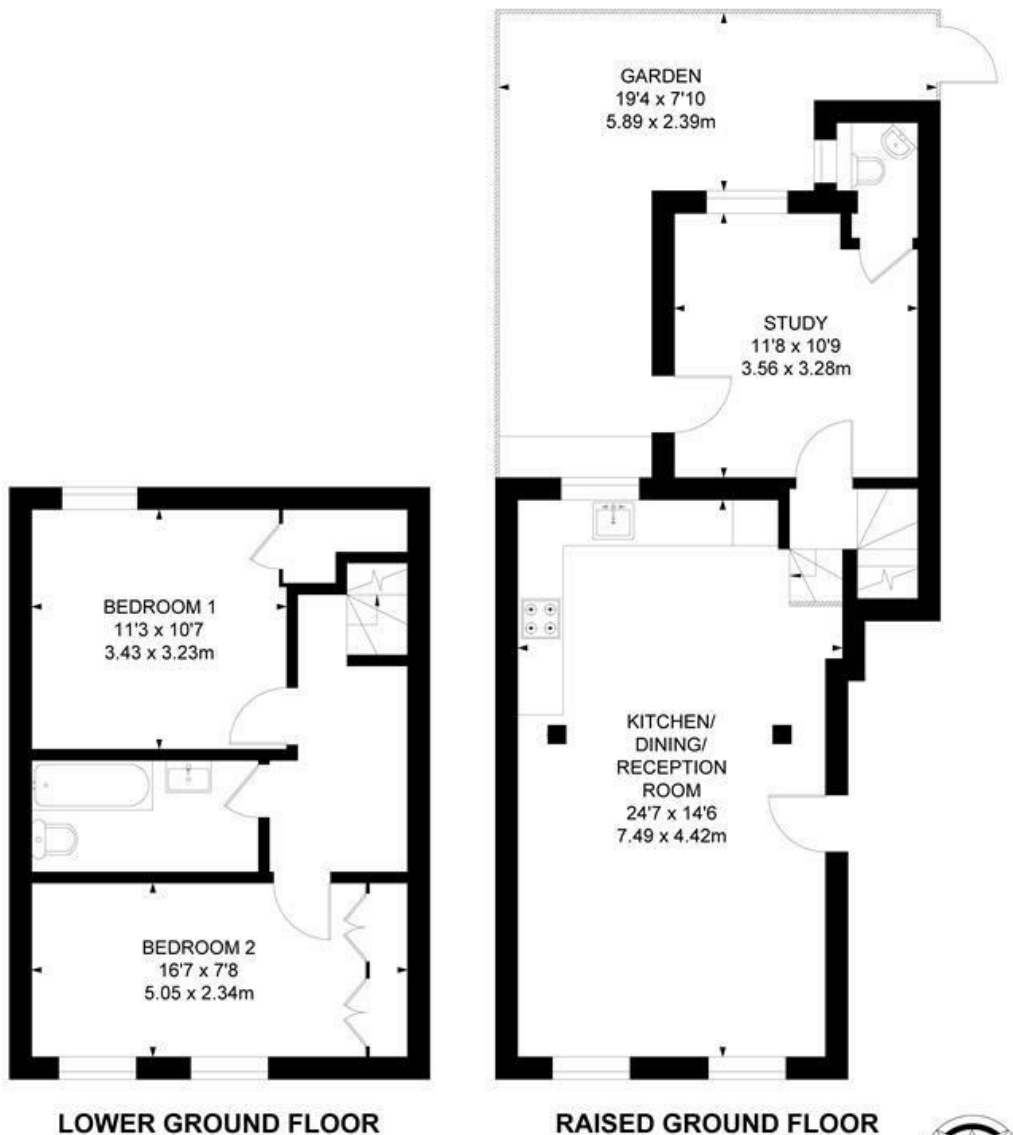


Railton Road, Herne Hill, SE24

## Railton Road, SE24 2 Bedroom Flat

APPROXIMATE GROSS INTERNAL AREA :

905 SQ FT / 84.07 SQ M



While we try our very best, floor plans are produced as a guide only and we take no responsibility for the precise accuracy with which any property is represented.





Railton Road, Herne Hill, SE24

