



Ratray Road, Brixton, SW2

1 bedroom flat - conversion for sale

£365,000

Leasehold

Property Details

A bright and elegant one double bedroom flat occupying the top floor of one of the handsome Victorian terraces on Ratray Road, a popular residential road, a five-minute stroll from central Brixton and Brockwell Park. This charming property is bright with an appealing airy atmosphere and a mix of endearing characterful elements and contemporary finishes. The fantastic open plan reception offers a well-equipped integrated kitchen and is flooded with natural light through multiple Velux windows. The bedroom is nestled towards the rear, with views of the gardens below and great storage options. The space is tranquil and perfect for peaceful nights. In keeping with the rest of the property, the family-sized bathroom is tastefully and neutrally finished. A neutral blank canvas this appealing home is ready to move into straight away with the potential to bring it to life with your own decorative flair whilst the location is highly desirable.

Features

- One double bedroom
- Victorian conversion
- Bright and airy
- Recently redecorated
- Sought-after location close to transport links
- Central Brixton on the doorstep
- Herne Hill a ten-minute stroll
- Brockwell Park nearby
- Chain free
- Share of freehold will be granted

Council tax band B EPC rating D (58)

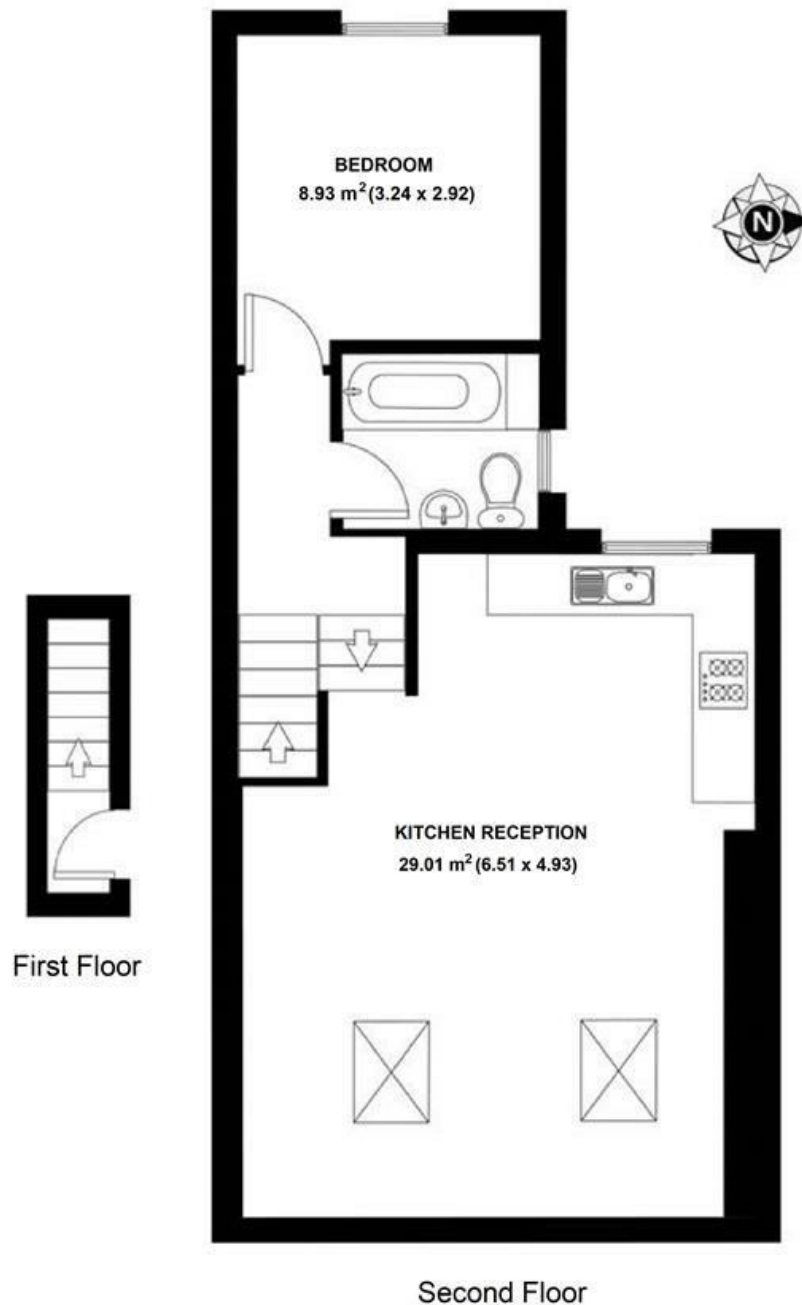


Rattray Road, Brixton, SW2

Rattray Road, SW2

1 Bedroom Flat

APPROXIMATE GROSS INTERNAL AREA: **527 SQ FT / 49 SQ M**



While we try our very best, floor plans are produced as a guide only and we take no responsibility for the precise accuracy with which any property is represented.

Ratray Road, Brixton, SW2

