

Sudbourne Road, Brixton, SW2

4 bedroom house to let

£950 Per Week

Part furnished

Property Details

Keating Estates are delighted to offer this stunning four double bedroom terraced house, perfectly positioned to enjoy the best of both Brixton and Clapham. Spacious, stylish, and full of character, this property is ideally suited to professional sharers looking for a well-connected and vibrant place to call home.

From the moment you step inside, the house impresses with its generous proportions and well-considered layout. A bright and airy dual-aspect lounge provides a welcoming space to relax or entertain, while the separate kitchen offers ample room for cooking and dining.

The living space flows beautifully into a large private garden, ideal for alfresco dining, barbecues, or simply soaking up the sun during the summer months.

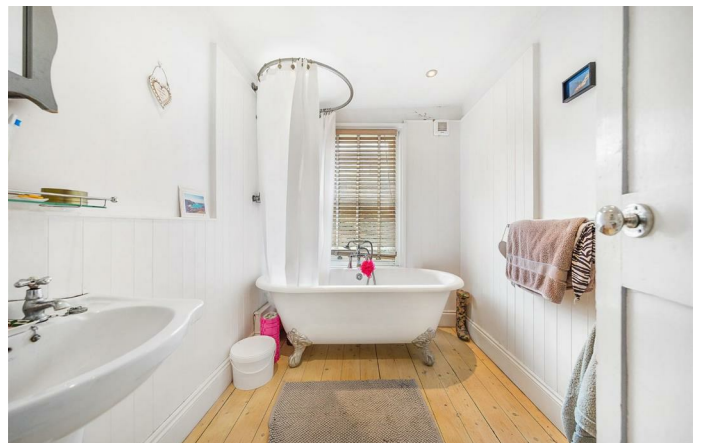
Upstairs, you'll find four genuine double bedrooms, each well-sized and suited to professionals seeking comfort and privacy. The bedrooms are served by a family-sized bathroom, complete with modern fittings and a clean, contemporary finish.

Location is key, and this home doesn't disappoint. Nestled just a nine-minute walk from Brixton's buzzing centre, residents can take full advantage of the area's renowned food and cultural scene.

Features

- Terraced House
- Four Bedrooms
- Two Receptions
- Central Location
- Private Garden
- Bright And Airy Throughout
- Sought After Location

Council tax band F EPC rating D (61)



Sudbourne Road, Brixton, SW2

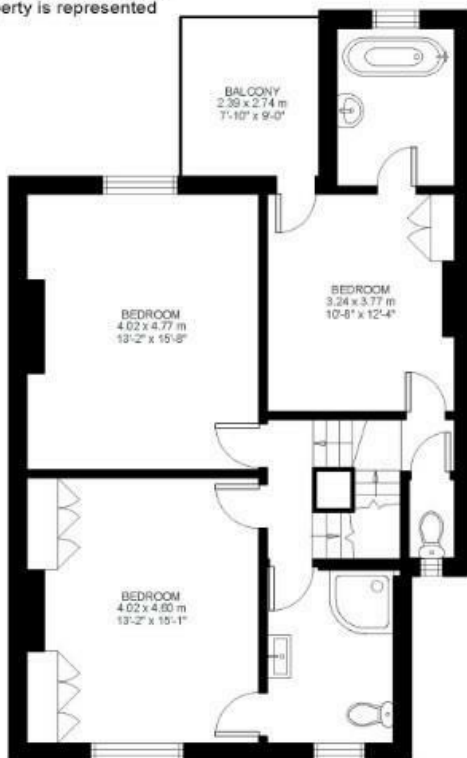
K

4 Bed house

Approx internal area:

1830 sqft 170 sqm

While we do try our very best, floor plans are produced as a guide only and we take no responsibility for the precise accuracy with which any property is represented

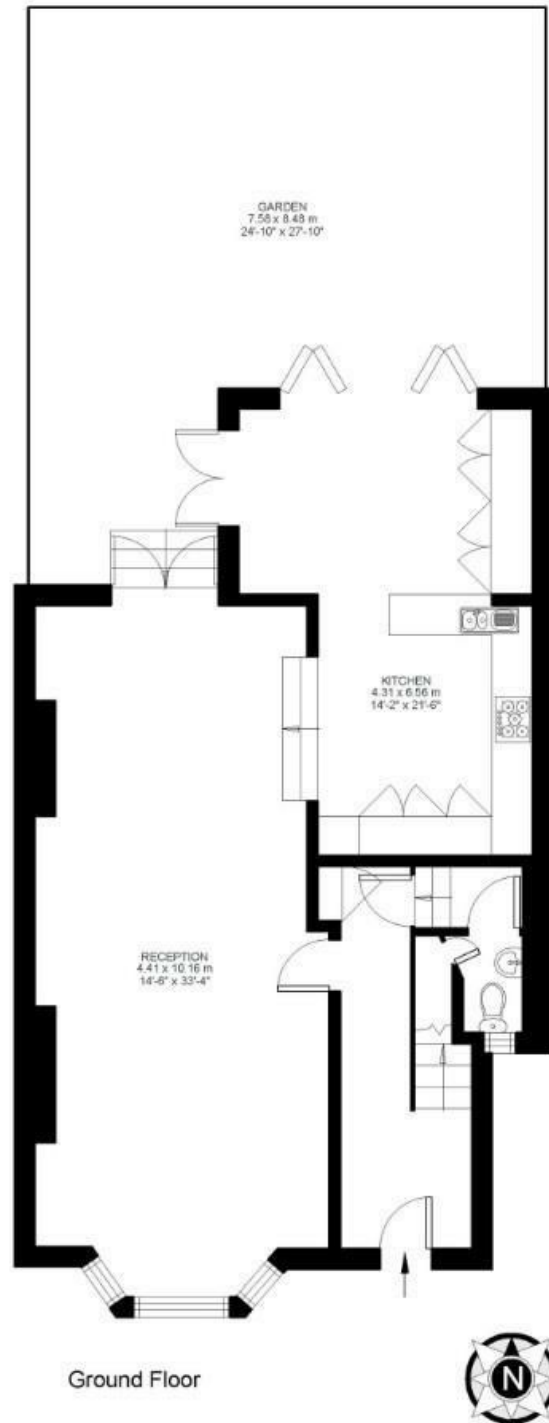


First Floor



Second Half Floor

Sudbourne Road



Sudbourne Road, Brixton, SW2

