



Coldharbour Lane, Brixton, SW9

4 bedroom flat to let

£900 Per Week

Furnished

Property Details

Keating Estates are proud to present this exceptional four-bedroom flat, ideally located in the heart of Brixton.

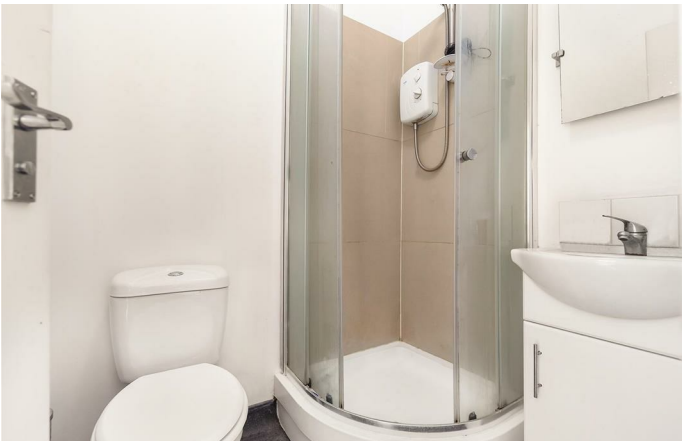
This beautifully presented property boasts four generously sized double bedrooms and three sleek, modern bathrooms, two of which are en-suites. The heart of the home is a bright and spacious open-plan kitchen and reception area, perfect for both relaxing and entertaining. Adding to its appeal is a private roof terrace, offering a peaceful outdoor retreat in a prime urban setting.

Ideally situated, the flat is just a short walk from the vibrant amenities of Brixton Hill, the green open spaces of Brockwell Park, and the buzzing atmosphere of central Brixton. Commuters will appreciate the 5-minute stroll to Brixton tube station, providing swift access to the Victoria Line and beyond.

Features

- Four bedrooms
- Two en-suites
- Around a 7 minute walk to Brixton Tube
- Open plan kitchen/ reception
- Light and airy throughout
- Around a 4 minute walk to Brixton Village
- HMO

Council tax band C EPC rating D (65)



Coldharbour Lane, Brixton, SW9



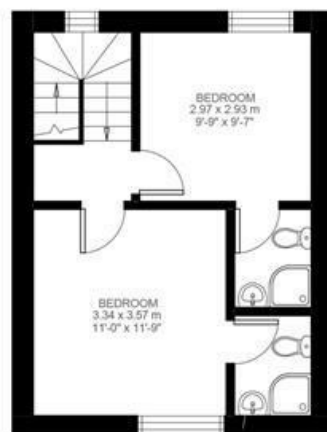
4 Bedroom Flat

Approx internal area:

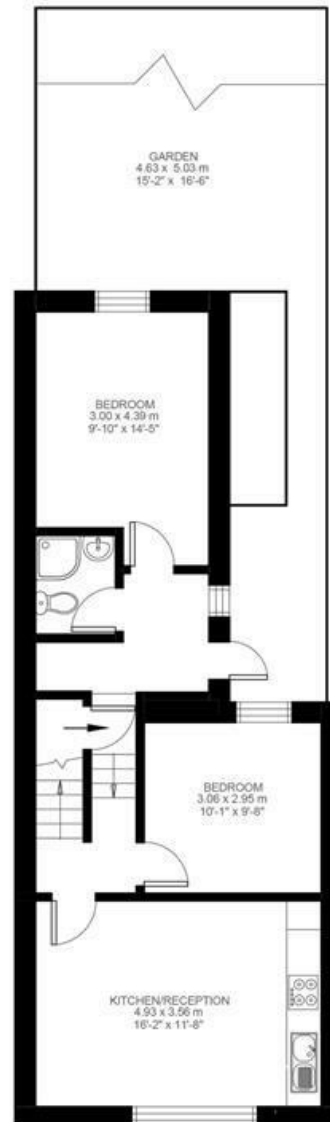
941 sqft 87 sqm

While we do try our very best, floor plans are produced as a guide only and we take no responsibility for the precise accuracy with which any property is represented

Coldharbour Lane



Second Floor



First Floor



Coldharbour Lane, Brixton, SW9

