



## Branksome Road, Brixton, SW2

1 bedroom flat to let

**£403 Per Week**

Part furnished

### Property Details

Keating Estates are proud to present this charming one-bedroom flat, ideally located within walking distance of both Clapham and Brixton.

This well-appointed property boasts a bright and airy open-plan living and kitchen area, flooded with natural light, perfect for modern living and entertaining. The sleek, contemporary bathroom and a peaceful double bedroom, quietly positioned at the rear of the property, ensure comfort and privacy.

The flat's layout enhances the sense of space and adds character, making it feel more like a home than a typical one-bedroom apartment.

Perfectly positioned equidistant from Clapham and Brixton, residents will enjoy easy access to the vibrant amenities of both areas, excellent transport links via the Northern and Victoria lines, and the green open spaces of Clapham Common and Brockwell Park.

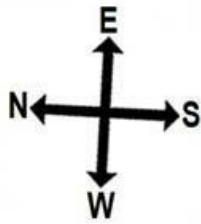
### Features

- One double bedroom
- Sleek modern bathroom
- Open plan reception and kitchen area
- Split level
- Central location
- Around an 11 minute walk to Brixton underground
- Around a 15 minute walk to Clapham Common underground

Council tax band C      EPC rating C (69)



Branksome Road, Brixton, SW2



1 bed flat.

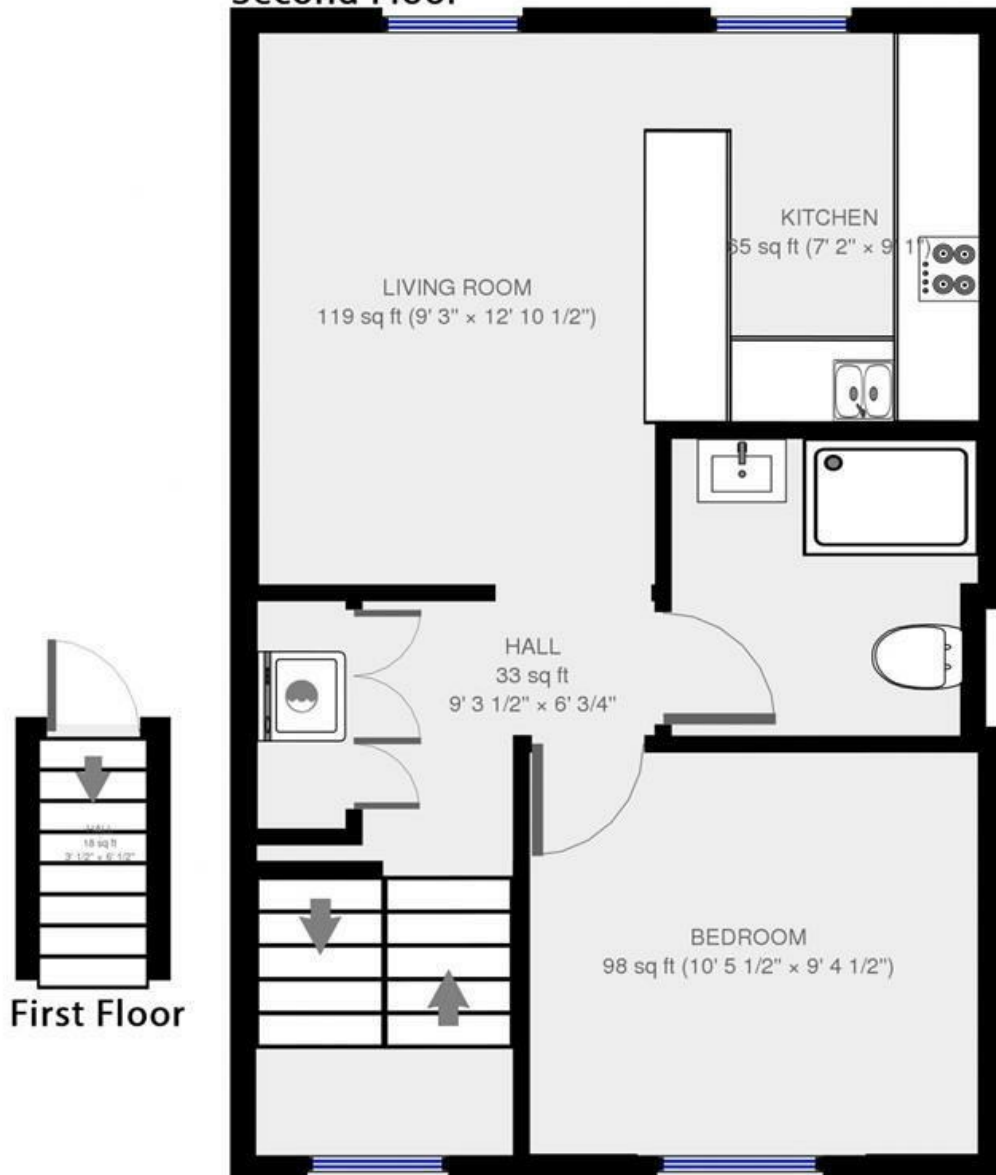
Approx internal area:

463 sqft

43 sqm

While we do try our very best, floor plans are produced as a guide only and we take no responsibility for the precise accuracy with which any property is represented

## Second Floor



First Floor

Branksome Road

Branksome Road, Brixton, SW2

