



## Brixtow Mews, Brixton, SW2

2 bedroom house - mews for sale

£600,000

Freehold

### Property Details

A charming two double bedroom, two bathroom freehold Mews House with a South-West facing cobbled yard, set within an exclusive gated development on desirable Morrish Road, a friendly Victorian street moments from Brixton Hill. Forming part of just five bespoke homes in 'Brixtow Mews', this former Victorian stables has been expertly converted to combine character and luxury, with secure electric gates, a horseshoe layout and elegant communal lighting. Internally, over 700 square feet of beautifully designed space unfolds, with an airy open-plan reception featuring engineered oak flooring and a wrap-around kitchen with Bosch appliances, composite stone worktops and LED mood lighting. Bi-fold stable-style windows open onto the charming courtyard. Upstairs, two generously sized bedrooms enjoy plush carpets, lofty ceilings and views over the Mews. The luxurious bathroom includes a walk-in rain shower beneath a Velux window and underfloor heating. Further highlights include a downstairs WC, excellent insulation, video entry system, and cycle storage.

### Features

- Two double bedrooms
- Two bathrooms
- South-West facing cobbled mews
- Victorian converted stables
- Exclusive gated enclave
- Luxury finishes
- 10 year new build warranty
- 3 year Zip Car 'Plus' and Forest Bike memberships
- Neighbourly road with street party and book club
- Freehold. Chain-free

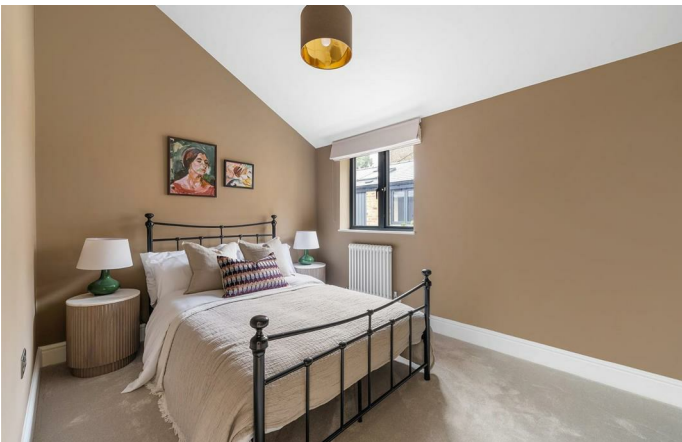
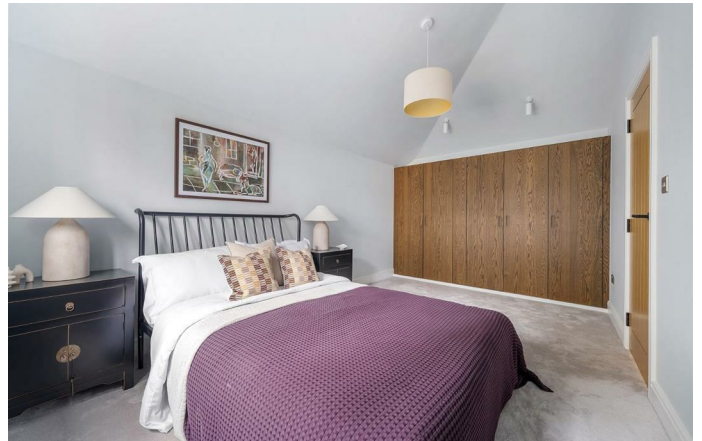
Council tax band

EPC rating C (77)





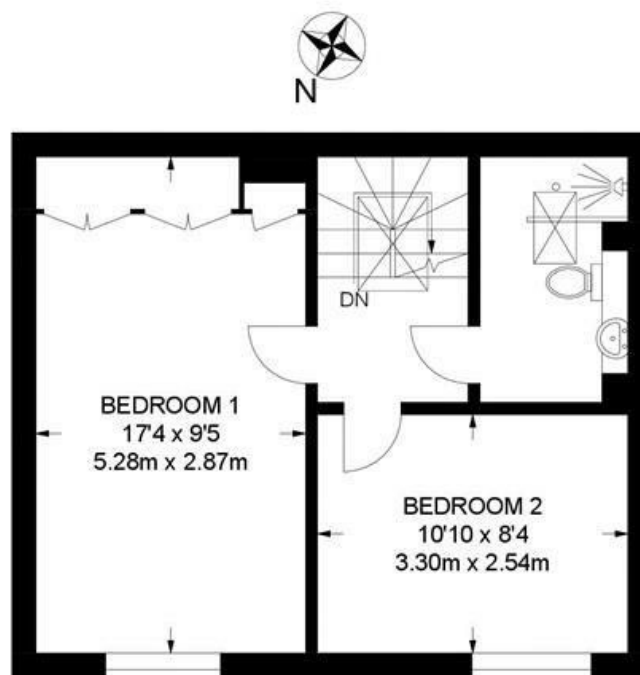




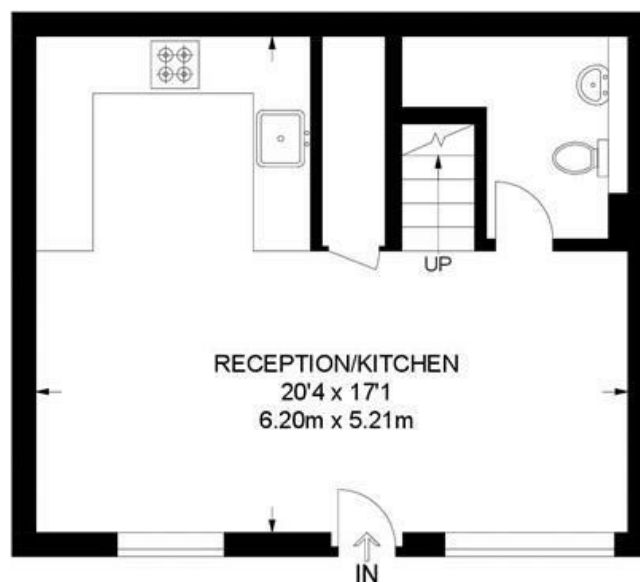
Brixton Mews, Brixton, SW2

## Brixton Mews, SW2 2 Bedroom House

APPROXIMATE GROSS INTERNAL AREA: 701 SQ FT / 65 SQ M



FIRST FLOOR



GROUND FLOOR



While we try our very best, floor plans are produced as a guide only and we take no responsibility for the precise accuracy with which any property is represented.



Brixton Mews, Brixton, SW2

