



Brixton Road, Brixton, SW9

2 bedroom flat for sale

£500,000

Leasehold

Property Details

A spacious and well-presented two double bedroom flat nestled within a secure and friendly building, away from the road in the heart of Brixton. High ceilings and sleek, contemporary design mean this property will appeal to a wide range of buyers. Whether you are looking to share with friends, for a buy-to-let or a convenient pied-a-terre, the unrivalled central location of this property offers something for everyone. It is rare to find this much space in such a central location, the open-plan living room provides enough room to relax, unwind and to dine. There is also a smart, contemporary and integrated kitchen with the addition of a breakfast bar plus room for a large dining table. The master bedroom is a fantastic room with a real sense of calm, you could easily forget that you are right in the centre of Brixton and there is a huge amount of built-in storage on offer. This bedroom has the luxury of a family sized en-suite bathroom. The second bedroom is also a decent size, and benefits from plenty of storage space. There is another family sized bathroom serving the property, both are of a sleek, contemporary tiled design.

Features

- Two double bedrooms
- Two bathrooms
- Over 940 square feet of internal space
- Modern finish throughout
- Bright and airy
- Quiet position within the building
- Central location in the heart of Brixton
- Victoria Line on the doorstep
- Brockwell Park within walking distance

Council tax band D

EPC rating C (76)



Brixton Road, Brixton, SW9



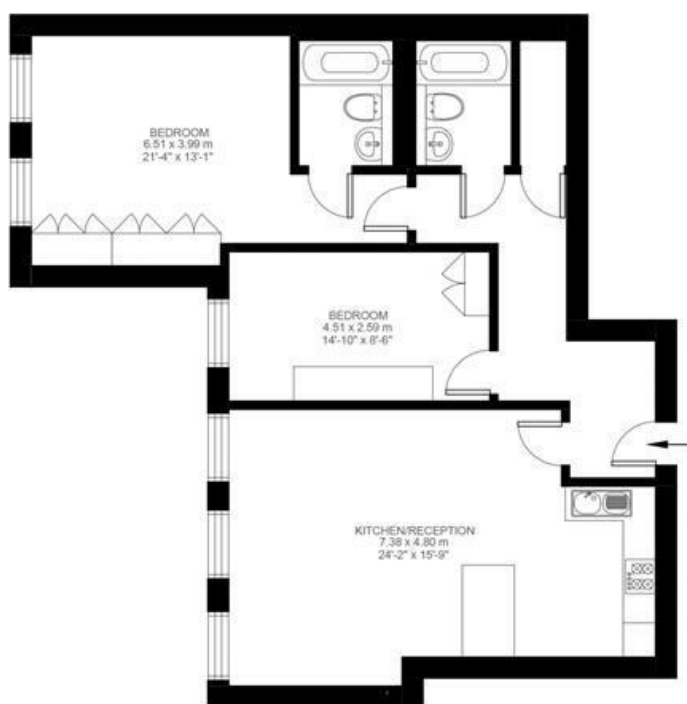
2 Bedroom Flat

Approx internal area:

943 sqft 88 sqm

While we do try our very best, floor plans are produced as a guide only and we take no responsibility for the precise accuracy with which any property is represented

Brixton Road



First Floor



Brixton Road, Brixton, SW9

