

Stockwell Park Walk, Brixton, SW9

2 bedroom flat - purpose built for sale

£595,000

Leasehold

Property Details

A luxurious two bedroom, two bathroom penthouse with views of the London Skyline and a West-facing terrace boasting sunset views. Tucked to the rear of the building away from other neighbours and the road, promoting a bright, private and quiet ambience. The open plan reception room is bathed in light from multiple windows, a sociable space equipped with built-in speakers. The contemporary kitchen boasts generous storage, fully integrated Neff appliances and views over the rooftops of Brixton toward the city and Battersea. The lounge leads out to a private terrace ideal for soaking up the afternoon sun and spectacular sunsets. Both bedrooms are generous doubles, set at either side of the property. The principal bedroom also enjoys sunset views, built in wardrobes and an en-suite. The second bedroom offers a versatile space, currently a home office and guest room. A family bathroom including bath and a handy hallway utility are also on offer. Underfloor heating and high energy efficiency reduce those pesky bills. Further benefits include secure shared bike storage, a communal garden and lift access, parking for an additional cost.

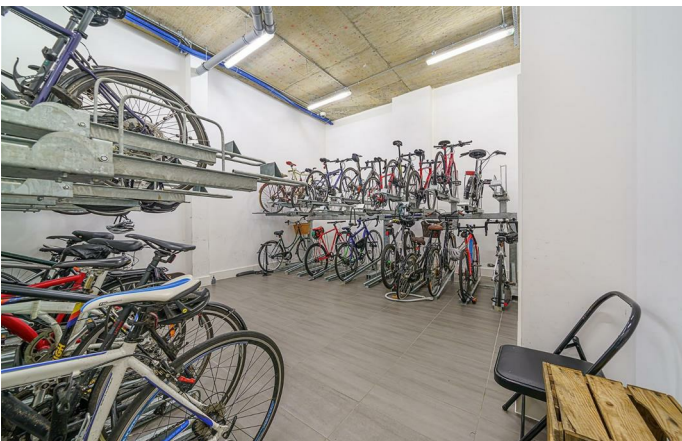
Features

- Penthouse apartment
- Two double bedrooms
- Two bathrooms
- West-facing private terrace with sunset views
- Far-reaching views of the London Skyline
- Secure modern development
- Shared garden, bike store and lift
- Sought-after location between Brixton, Stockwell and Clapham
- Short walk to the Victoria and Northern Lines

Council tax band D

EPC rating B (84)

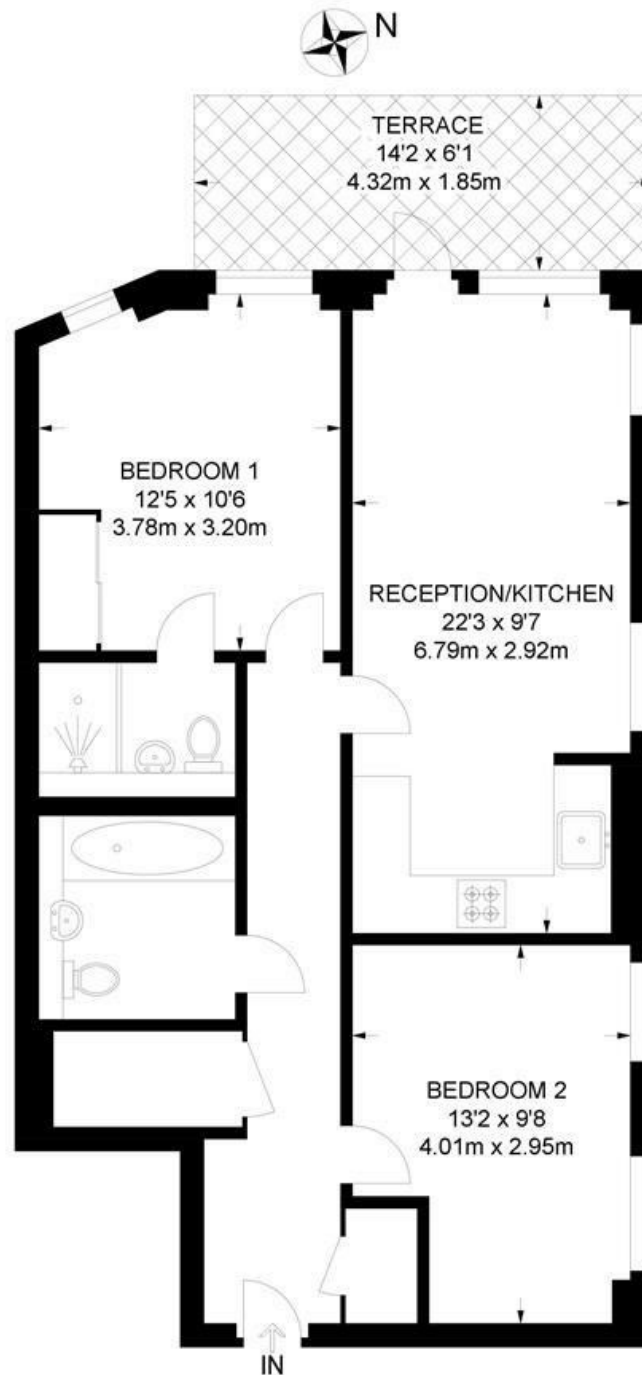




Stockwell Park Walk, Brixton, SW9

Stockwell Park Walk, SW9
2 Bedroom Flat

APPROXIMATE GROSS INTERNAL AREA: **694 SQ FT / 64.5 SQ M**



EIGHTH FLOOR



While we try our very best, floor plans are produced as a guide only and we take no responsibility for the precise accuracy with which any property is represented.

Stockwell Park Walk, Brixton, SW9

