

Thornbury Road, Brixton, SW2

2 bedroom flat - conversion for sale

£470,000

Share of Freehold

Property Details

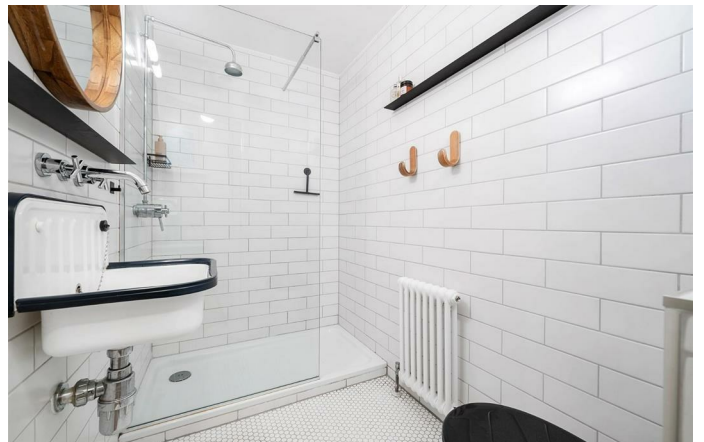
A stylish two bedroom flat set on the first floor of a characterful Victorian terraced house with kerb appeal, located on a desirable residential street. This charming home blends period elegance with modern design, centred around a bright semi-open plan reception. An expansive bay window with plantation shutters floods the space with natural light, highlighting tall ceilings, elegant cornicing, original wooden floors and a striking fireplace with ornate tiling. Bespoke shelving and cabinetry add style and practicality. Double doors lead to a contemporary kitchen with glossy units, rich wooden flooring, and sleek black hexagonal tiles, offering both functionality and flexibility. Both bedrooms are peacefully tucked to the rear, providing privacy and calm. The principal bedroom features fitted wardrobes and shelving, while the second, currently a guest room and office, offers versatility with space for a double bed. A chic monochrome bathroom boasts a walk-in rainfall shower and boutique finishes. Externally, the property has been recently refurbished, enhancing its character and durability, and is set within a friendly, community-minded street.

Council tax band C

EPC rating C (78)

Features

- Two bedrooms
- Victorian conversion
- Bright, airy and characterful
- Tastefully finished throughout
- Quiet residential road
- Local amenities nearby
- Walking distance to Clapham and Brixton
- Upmarket Abbeville Village a short stroll away
- Northern and Victoria Lines
- Share of freehold. Chain-free



Thornbury Road, Brixton, SW2

Thornbury Road, SW2
2 Bedroom Flat

APPROXIMATE GROSS INTERNAL AREA: **517 SQ FT / 48 SQ M**



FIRST FLOOR



While we try our very best, floor plans are produced as a guide only and we take no responsibility for the precise accuracy with which any property is represented.

Thornbury Road, Brixton, SW2

