



Norwood Road, Tulse Hill, SE27

2 bedroom flat to let

£420 Per Week

Furnished

Property Details

Keating Estates are proud to present this stunning and generously proportioned two-bedroom flat, set within a unique period building formerly an old fire station just a short walk from Tulse Hill Overground station.

Beautifully blending original character with contemporary finishes, this charming home features high ceilings, large windows, and a spacious layout throughout. The property comprises a bright and airy reception room, a separate modern kitchen, two well-sized double bedrooms, and a stylish family bathroom.

Ideally positioned to enjoy the best of Tulse Hill and West Norwood, the flat is surrounded by local shops, cafés, pubs, and even a pottery studio, with the village-like West Norwood High Street offering a Picturehouse cinema, restaurants, and other amenities just minutes away.

Herne Hill and Streatham are also within easy reach, while Brixton is just a short bus ride—or a scenic stroll through the much-loved Brockwell Park, home to the iconic 1930s Lido.

Tulse Hill Station (Zone 3) is just three minutes' walk, providing direct access to London Bridge and central London via Southern Rail and Thameslink services.

Features

- Two bedrooms
- Light and airy
- Around a six Minute walk to Tulse Hill and West Norwood Stations
- Separate Kitchen and Living Room
- Shorty walk to Brockwell park
- Original features
- Close to Transport Links

Council tax band C

EPC rating B (82)

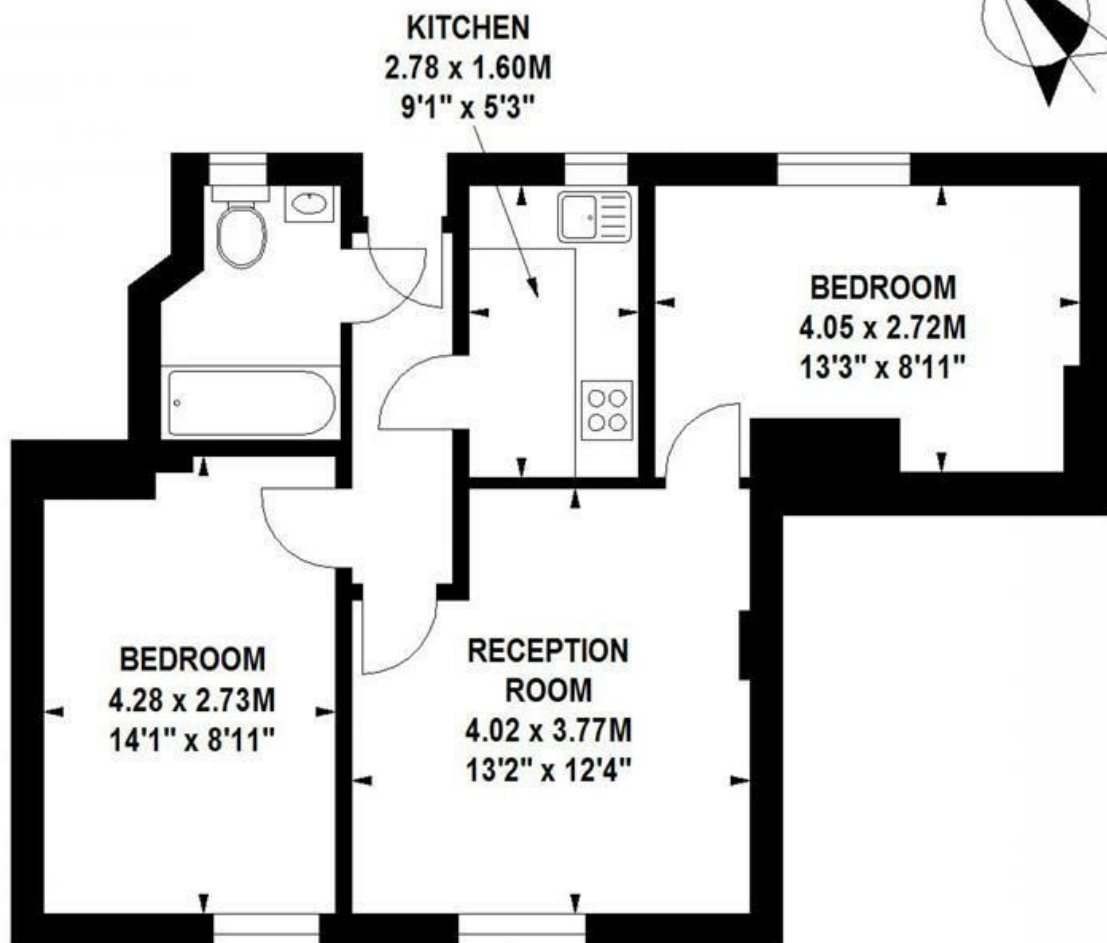
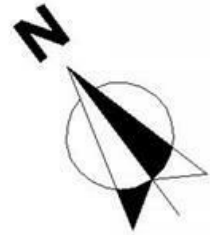


Norwood Road, Tulse Hill, SE27

Norwood Road, SE27

Approximate gross internal area

50 sq m / 538 sq ft



Second Floor

Floor Plan produced for Lexadon by Mays Floorplans © . Tel 020 3397 4594

Illustration for identification purposes only, not to scale

All measurements are maximum, and include wardrobes and window bays where applicable

Norwood Road, Tulse Hill, SE27

