

Trent Road, Brixton, SW2

2 bedroom flat - conversion to let

£510 Per Week

Furnished

Property Details

Keating Estates are proud to present this beautifully presented two-bedroom conversion flat, set on a picturesque residential street just off Brixton Hill. Occupying the ground floor of a charming Victorian property, this split-level home offers a stylish open-plan kitchen and reception room, two spacious double bedrooms, two modern bathrooms, and a private patio perfect for relaxing or entertaining.

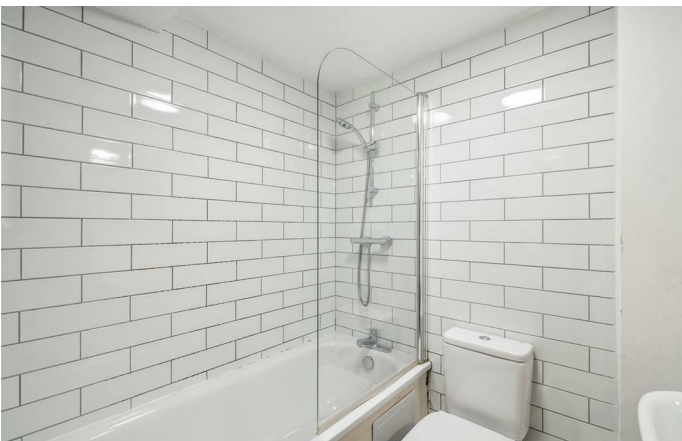
Ideally located within walking distance of Brockwell Park and the vibrant amenities of Brixton, the property also benefits from excellent transport links via Brixton Underground (Victoria Line) and National Rail stations.

Perfect for professional sharers, this home combines character, space, and a fantastic location.

Council tax band C **EPC rating D (60)**

Features

- Two double bedrooms
- Two bathrooms
- Open plan reception and kitchen
- Private patio area
- Split level conversion flat
- Close to public transport links
- Close to Brockwell Park



Trent Road, Brixton, SW2

K

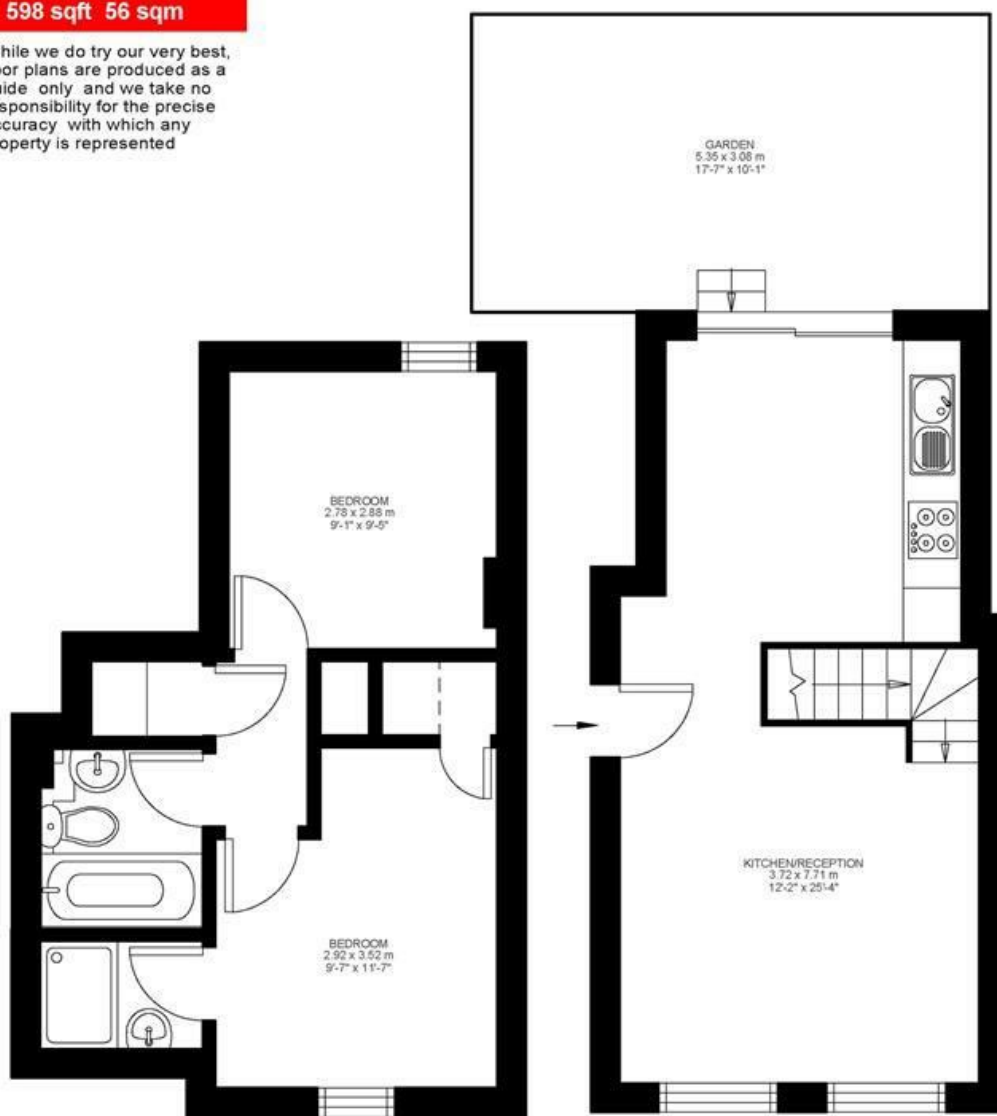
2 Bed flat

Approx internal area:

598 sqft 56 sqm

While we do try our very best, floor plans are produced as a guide only and we take no responsibility for the precise accuracy with which any property is represented

Trent Road



Lower Ground Floor

Ground Floor



Trent Road, Brixton, SW2

