



Croxted Road, Herne Hill, SE21

4 bedroom house for sale

£1,225,000

Freehold

Property Details

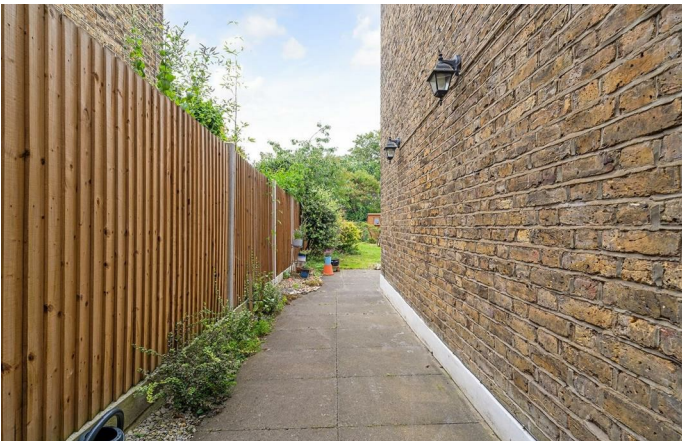
A fantastic four-bedroom end-of-terrace Victorian house on Croxted Road, one of the most popular residential streets between Herne Hill and Dulwich Village. Set back behind a walled front garden, this attractive home blends period charm with modern practicality, offering two generous reception rooms, a spacious kitchen/breakfast room, and a tranquil private garden. Features such as sash windows, cornicing, high ceilings and decorative fireplaces add character throughout. The rear reception opens via French doors to the large garden, perfect for entertaining or relaxing. Upstairs are four bedrooms, a stylish family bathroom, and separate W/C. The principal bedroom spans the full width of the house, enjoying excellent natural light. Additional benefits include a demised cellar, and the potential to extend the property (STPP). Moments from Brockwell Park and within the Rosendale School catchment, the home is a short walk to Herne Hill and Dulwich Village, with excellent transport links to London Bridge, Victoria, and beyond.

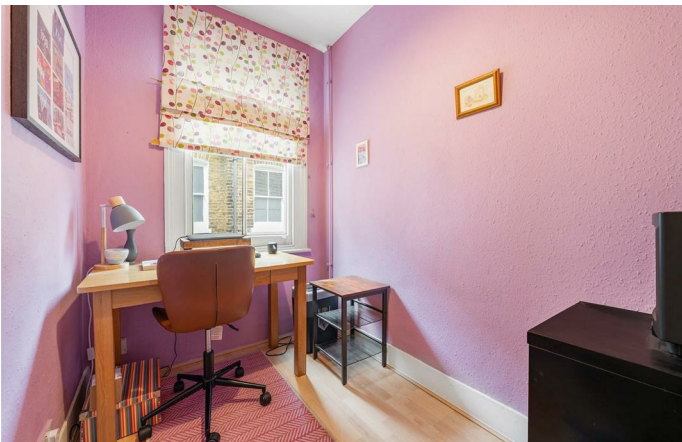
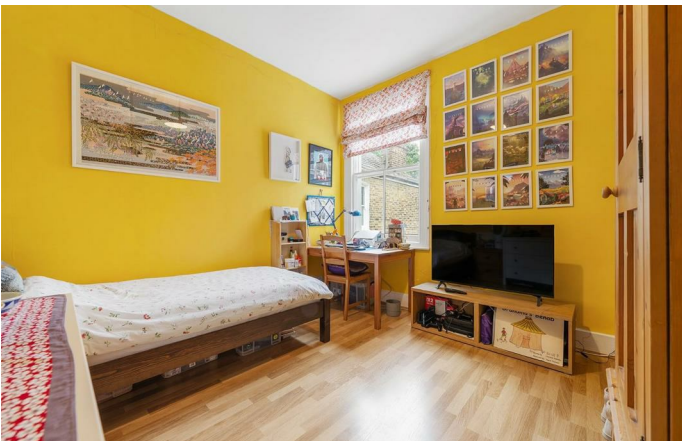
Council tax band F

EPC rating D (63)

Features

- Four bedrooms
- End of terrace Victorian house
- Private garden
- Freehold
- Sought-after, neighbourly street
- Over 1,500 square feet of internal living space
- Brockwell Park a short stroll
- Sandwiched between Herne Hill and Dulwich Village
- Within catchment area for Ofsted outstanding schools
- Large loft space with potential to extend into (STPP)





Croxted Road, Herne Hill, SE21

Croxted Road, SE21

4 Bedroom House

APPROXIMATE GROSS INTERNAL AREA WITH CELLAR: **1646 SQ FT / 152.9 SQ M**

APPROXIMATE GROSS INTERNAL AREA WITHOUT CELLAR: **1542 SQ FT / 143.2 SQ M**



While we try our very best, floor plans are produced as a guide only and we take no responsibility for the precise accuracy with which any property is represented.

Croxted Road, Herne Hill, SE21

