



Kingswood Road, Brixton, SW2

3 bedroom maisonette to let

£565 Per Week

Furnished

Property Details

Keating Estates are delighted to present this beautifully presented and spacious maisonette, offering the perfect blend of character, comfort, and thoughtful design. This HMO-licensed property permits a family, two couples, a couple with a single sharer, or two individual sharers. Previously owner-occupied, the property has been lovingly maintained and is arranged over two well-proportioned floors with its own private entrance.

At the heart of the home is a stylish, well-equipped kitchen that opens out onto a private rear balcony ideal for your morning coffee or unwinding in the evening. The kitchen connects seamlessly to a spacious dining room, perfect for entertaining or enjoying meals together.

Also on the first floor are a generous front reception room, a modern family bathroom, and one of the three bedrooms. Upstairs, you'll find a large master bedroom, a further double bedroom, and a versatile additional room ideal for use as a study, home office, dressing room, or guest room.

Set in an enviable location, the property is a fifteen minutes from a gated entrance to Brockwell Park, offering access to stunning green spaces, the iconic 1930s Lido, café, and excellent sports facilities. Local favourites including Maya's Bakehouse, The Hootenanny, Maremma, and Naughty Piglets are just around the corner, alongside a large supermarket for everyday essentials. Transport links are exceptional, Brixton Station (Victoria Line and Overground) is a short bus ride away, providing quick access to central London.

Features

- Two bedroom with study
- Family bathroom
- Reception room
- Dining room and separate kitchen
- Balcony
- Victorian
- Hardwood floors and doors
- Excellent Transport Links

Council tax band D EPC rating D (66)



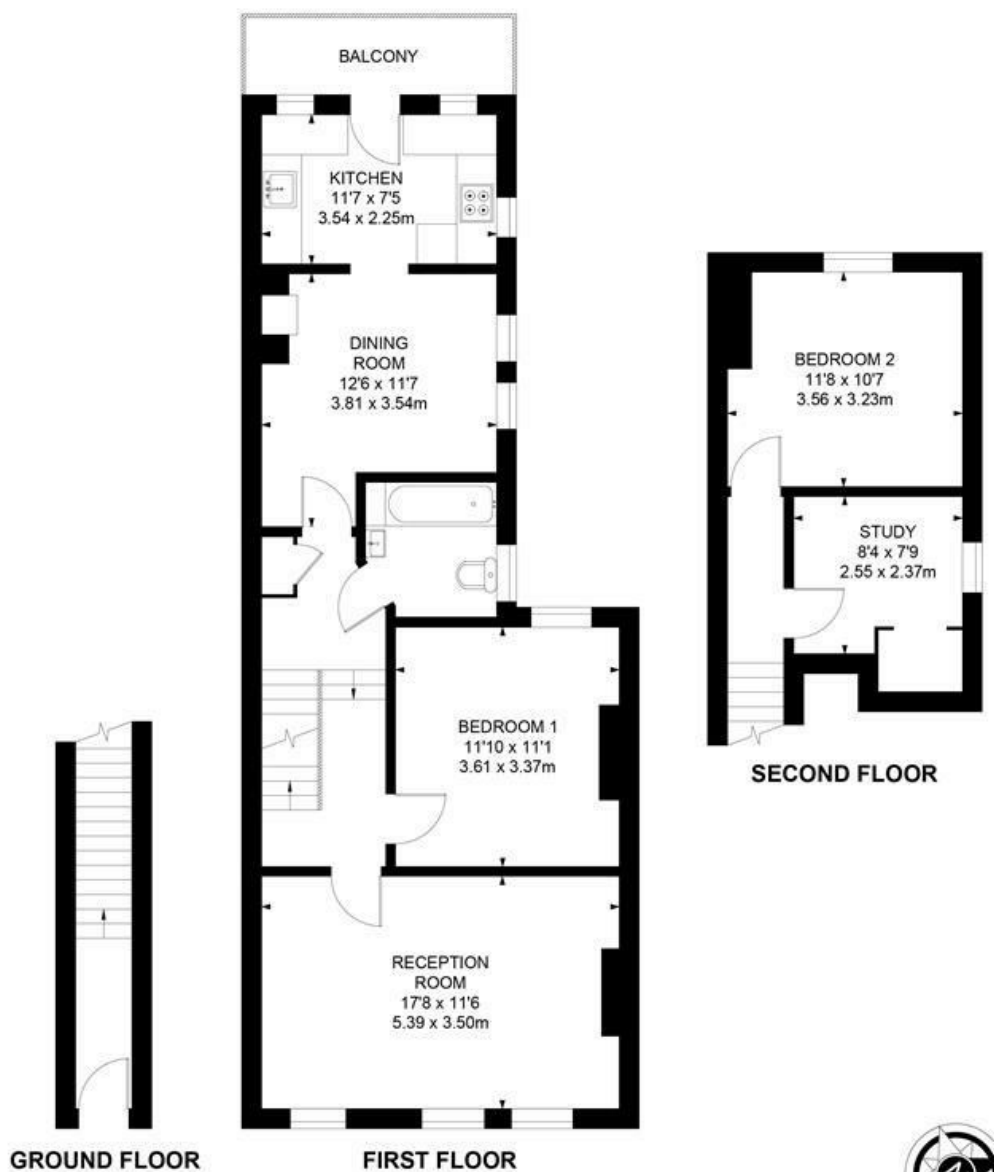
Kingswood Road, Brixton, SW2

Kingswood Road, SW2

2 bedroom flat

APPROXIMATE GROSS INTERNAL AREA :

958 SQ FT / 89 SQ M



While we try our very best, floor plans are produced as a guide only and we take no responsibility for the precise accuracy with which any property is represented.

Kingswood Road, Brixton, SW2

