



Leander Road, Brixton, SW2

1 bedroom flat - conversion for sale

£535,000

Share of Freehold

Property Details

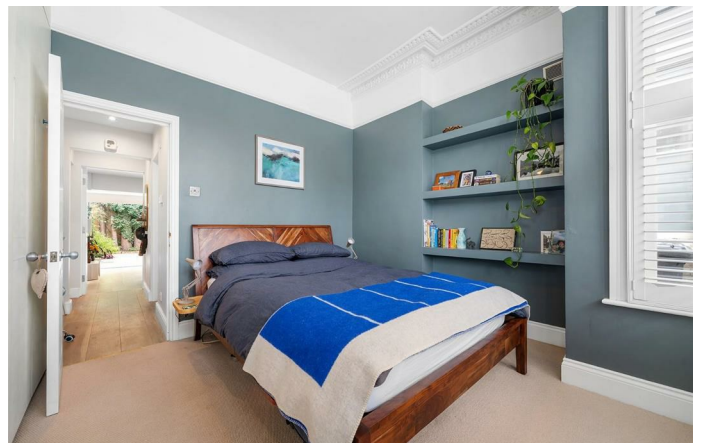
This exceptional one-bedroom garden flat is set within a beautiful double-fronted Victorian conversion on sought-after Leander Road, a quiet, tree-lined street in the heart of Brixton. Stylishly renovated to a high standard, the home offers a spacious open-plan reception with a sleek black kitchen, premium AEG appliances, real wood flooring, and underfloor heating. A large skylight and full-width sliding doors fill the space with natural light and lead out to a private, landscaped garden, a tranquil retreat with side access, sandstone paving, and mature trees. The generous bedroom features a bay window with plantation shutters, ornate corning, and wool carpet, while the wet room-style bathroom impresses with high-end fixtures, underfloor heating, and modern design. Additional highlights include a utility room, cellar, and updated electrics. Ideally located near Brockwell Park, Brixton Village, Herne Hill, and excellent transport links, this turnkey property blends period charm with contemporary comfort.

Council tax band B

EPC rating D (63)

Features

- One bedroom
- Private garden
- Double-fronted Victorian conversion
- Renovated to a high standard with underfloor heating
- Sought-after residential street
- Local shops and cafes on the doorstep
- Central Brixton a short walk away
- Brockwell Park a five-minute walk
- Herne Hill a ten-minute stroll through the park
- Share of freehold

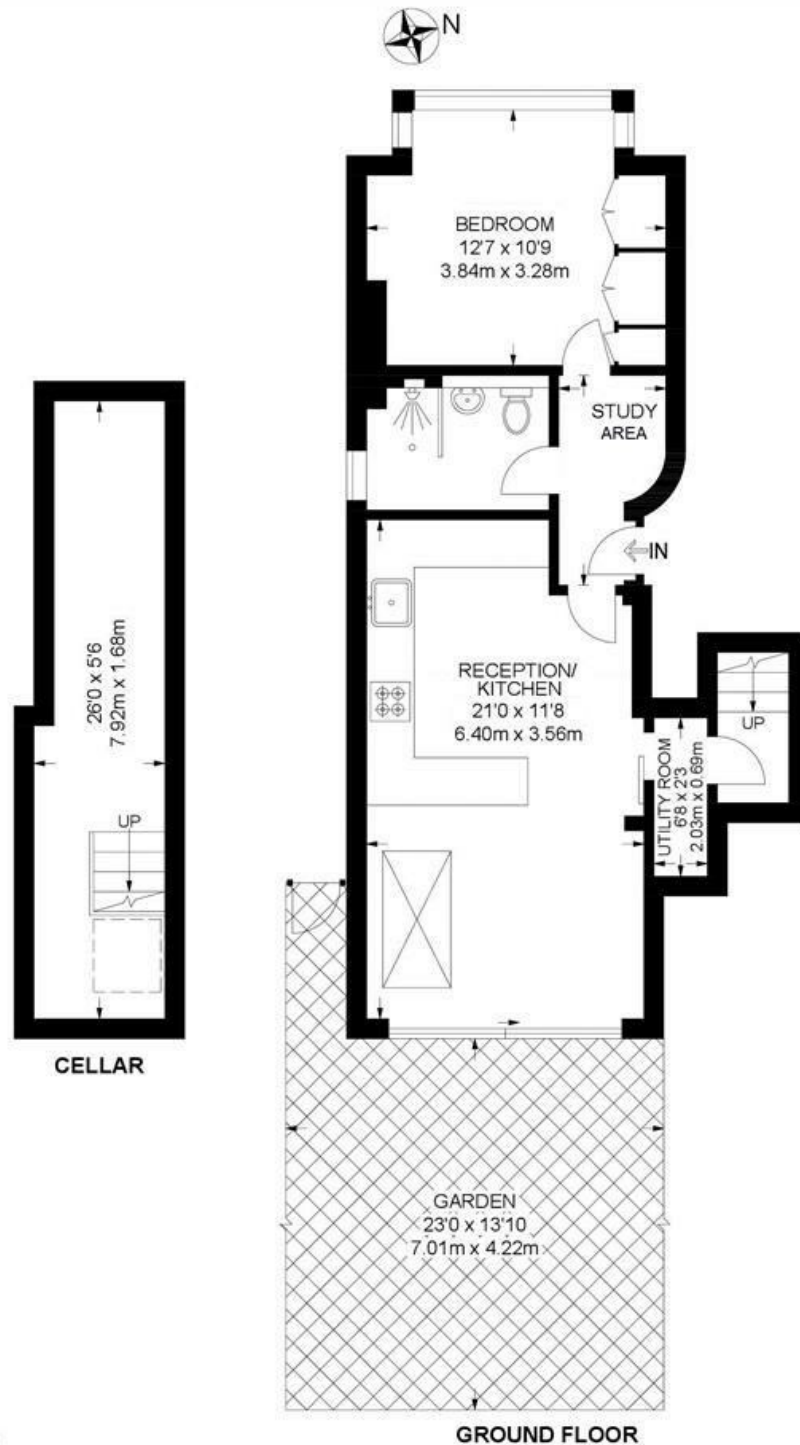


Leander Road, Brixton, SW2

Leander Road, SW2
1 Bedroom Flat

APPROXIMATE GROSS INTERNAL AREA WITH CELLAR: **614 SQ FT / 57 SQ M**

APPROXIMATE GROSS INTERNAL AREA WITHOUT CELLAR: **482 SQ FT / 45 SQ M**



While we try our very best, floor plans are produced as a guide only and we take no responsibility for the precise accuracy with which any property is represented.

Leander Road, Brixton, SW2

