

## Romola Road, Tulse Hill, SE24

2 bedroom flat to let

£415 Per Week

Furnished

### Property Details

Keating Estates are proud to present this charming two double bedroom first-floor flat, ideally located just a stone's throw from Tulse Hill Station, offering excellent transport links directly into Central London via Southern Rail and Thameslink services.

This beautifully presented property retains a number of original features, including elegant feature fireplaces and large sash windows that flood the space with natural light. The bright and spacious reception room provides ample space for both relaxing. The sleek, modern kitchen offers generous storage and a clean, contemporary finish.

Both double bedrooms are well-proportioned and share a stylish, family-sized bathroom, completing this well-balanced home.

Perfectly positioned to enjoy the best of Tulse Hill and West Norwood, the flat is surrounded by a fantastic mix of independent shops, cafés, pubs, and even a local pottery studio. Just minutes away, West Norwood High Street offers a village feel, complete with a Picturehouse cinema, a selection of restaurants, and a wide range of other amenities.

Herne Hill and Streatham are also easily accessible, while Brixton is just a short bus ride away—or a

### Features

- Victorian conversion
- Bright and airy
- Close to transport links
- 2 Double Bedrooms
- Original features

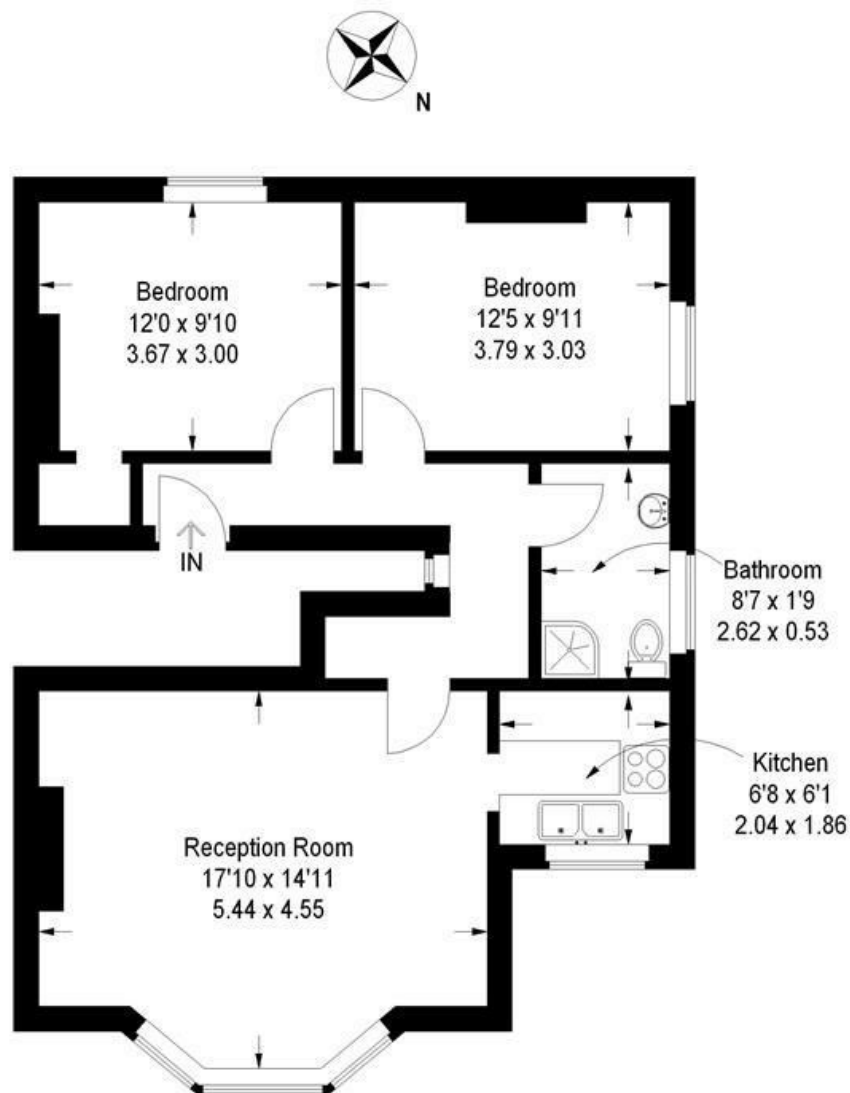
Council tax band C      EPC rating C (71)



Romola Road, Tulse Hill, SE24

## Romola Road

Approximate Gross Internal Area = 678 sq ft / 63 sq m



### First Floor

Illustration for identification purposes only, measurements are approximate, not to scale.  
FloorplansUsketch.com © 2013 (ID79666)

Romola Road, Tulse Hill, SE24

