

Cadmus Close, Clapham, SW4

1 bedroom flat - purpose built for sale

£415,000

Leasehold

Property Details

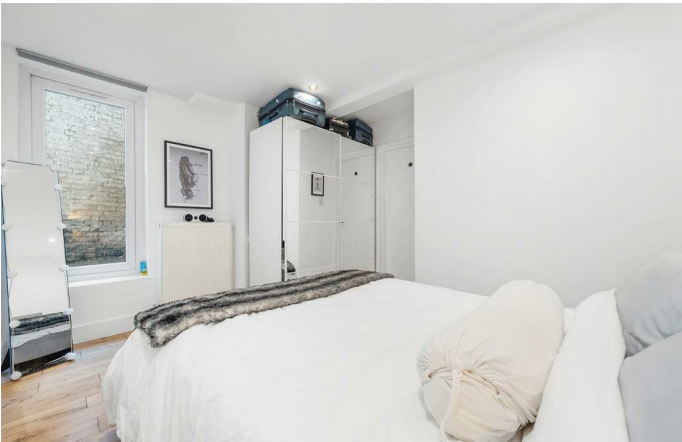
Beautifully bright and modern, this one double bedroom apartment boasts access to a sunny shared patio and a large courtyard. Peacefully positioned within a leafy, gated close in the heart of Clapham, it enjoys tranquillity just four minutes' walk from the Tube. The open-plan reception forms the heart of the home, a spacious area ideal for relaxing or entertaining, with engineered wood flooring and huge windows flooding the space with natural light. The well-appointed kitchen offers fantastic storage in sleek white cabinetry, complete with a new dishwasher, hob and washing machine. The neutrally decorated bedroom sits quietly to the rear, with direct courtyard access, while the newly renovated bathroom features marbled tiling, a rain shower over the bath, integrated storage and a heated towel rail. Additional hallway storage ensures a clutter-free home. Externally, two communal courtyards provide generous, sunlit spaces for al fresco dining or morning coffee, rarely used by the other current residents.

Council tax band C

EPC rating (null)

Features

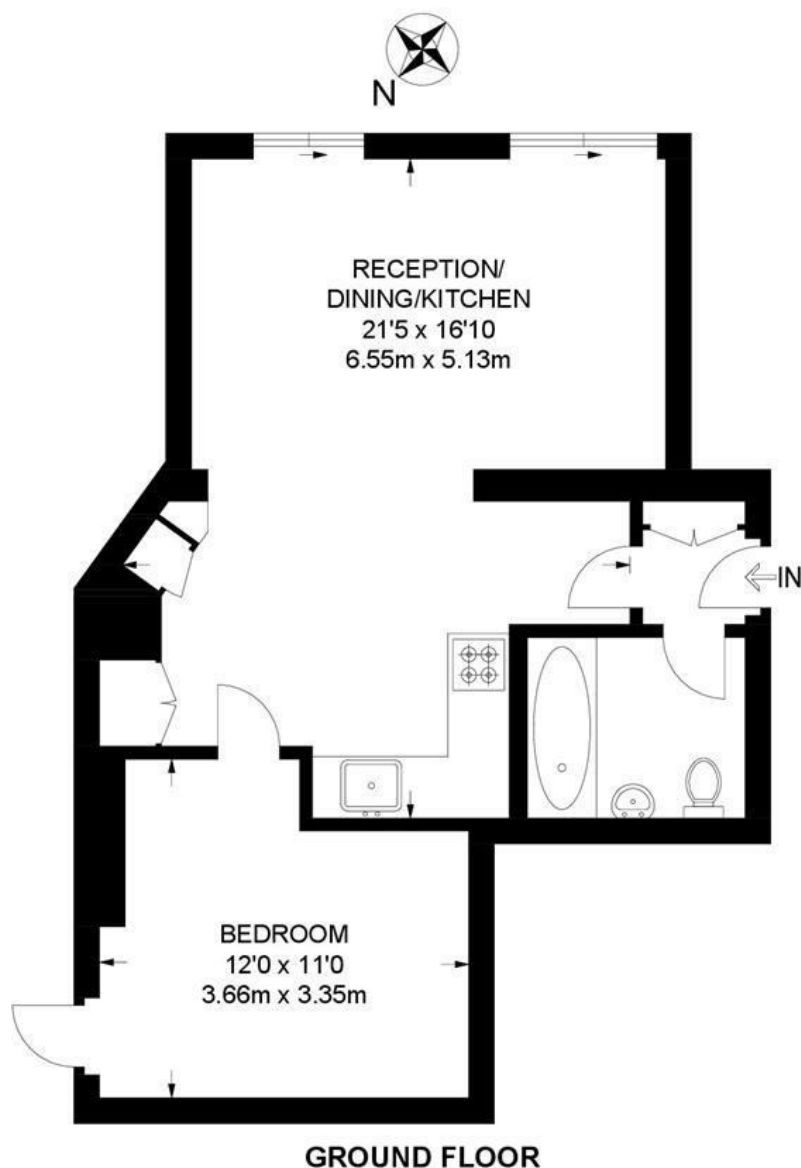
- One double bedroom
- Access to two communal courtyards
- Gated modern home
- Bright and airy
- Vast array of amenities on the doorstep
- Clapham High Street just a one-minute walk
- Northern Line a four-minute stroll
- Green spaces of Clapham Common a ten-minute walk
- Central Brixton a fifteen-minute walk
- Chain-free



Cadmus Close, Clapham, SW4

Cadmus Close, SW4 1 Bedroom Flat

APPROXIMATE GROSS INTERNAL AREA: **494 SQ FT / 46 SQ M**



While we try our very best, floor plans are produced as a guide only and we take no responsibility for the precise accuracy with which any property is represented.

Cadmus Close, Clapham, SW4

