

Avenue Park Road, Tulse Hill, SE27

2 bedroom flat - conversion for sale

Share of Freehold

Property Details

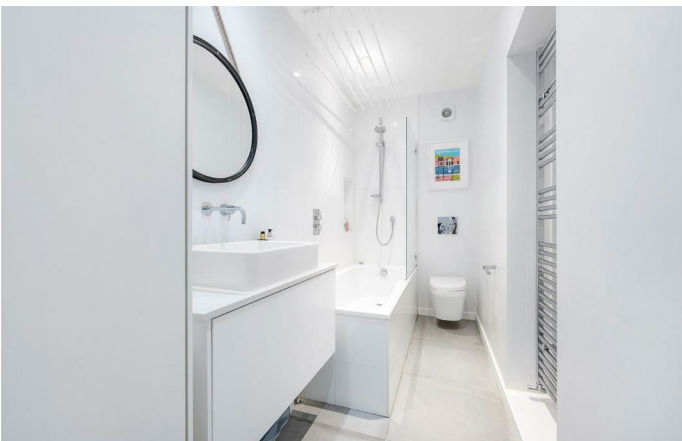
A unique two bedroom apartment with a South-East facing garden, versatile garden studio, and private entrance, set within a handsome Victorian house. Lovingly maintained, the current owners have landscaped the garden, added the garden room, and refreshed both front and rear façades. The private entrance opens into a hallway leading to a spacious open-plan reception with sleek kitchen, integrated appliances, and adjacent utility room. The generous lounge-diner benefits from built-in storage and French doors to the garden. Beautifully landscaped, the garden offers a patio for al fresco dining, a lush lawn, and gated side access. At the rear, the garden studio features a shower room and a heat pump providing both A/C and heating. Inside, the principal bedroom boasts a bay window and fitted wardrobes, while the second double overlooks the garden. A central bathroom with bath, overhead shower, and storage completes the layout. Additional features include underfloor heating throughout, an understairs cupboard and potential to extend where a former shed stood. The home is in a quiet spot despite the station.

Council tax band B

EPC rating C (69)

Features

- Two bedrooms
- South-East facing garden
- Garden studio with bathroom, A/C and heating
- Victorian conversion with private entrance
- Over 850 square feet
- Local shops, pubs and restaurants
- Train station a three-minute walk
- West Norwood High street a four-minute walk
- Brockwell Park under a fifteen-minute stroll
- Share of freehold. Chain-free





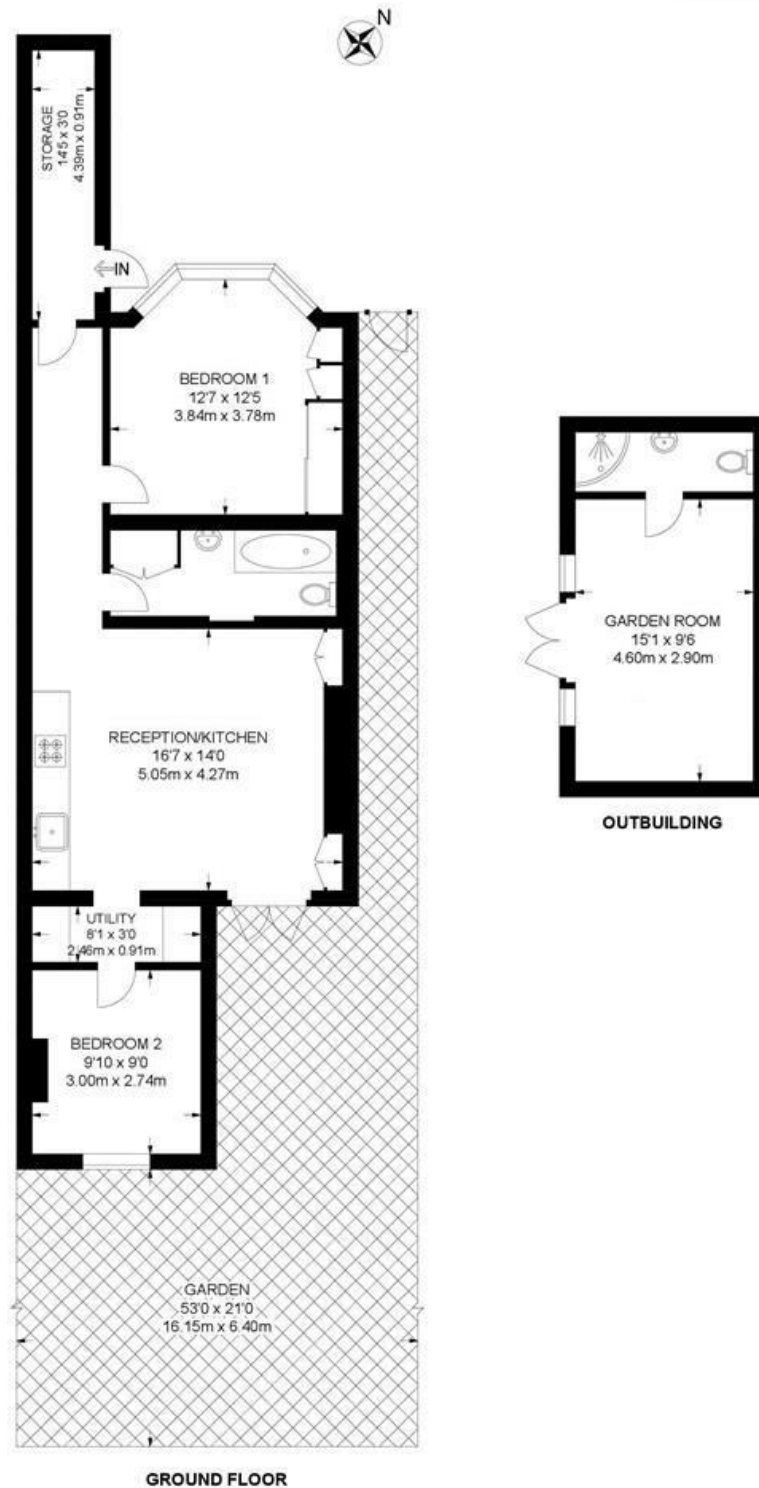
Avenue Park Road, Tulse Hill, SE27

Avenue Park Road, SE27

2 Bedroom Flat

APPROXIMATE GROSS INTERNAL AREA WITH OUTBUILDING: 872 SQ FT / 81.0 SQ M

APPROXIMATE GROSS INTERNAL AREA WITHOUT OUTBUILDING: 695 SQ FT / 64.6 SQ M



While we try our very best, floor plans are produced as a guide only and we take no responsibility for the precise accuracy with which any property is represented.

Avenue Park Road, Tulse Hill, SE27

