



Tulse Hill, SW2

2 bedroom flat to let

£540 Per Week

Furnished

Property Details

Keating Estates are proud to present this exceptional top-floor apartment, offering two spacious double bedrooms within a sought-after gated development just a short walk from both Brixton town centre and Herne Hill.

Immaculately presented throughout, this stunning home boasts an impressive open-plan reception with direct access to a private roof terrace showcasing phenomenal panoramic views. The property includes two well-proportioned double bedrooms and two sleek, modern bathrooms, making it ideal for sharers, couples, or anyone seeking comfortable, stylish living in a vibrant location.

Set within beautifully maintained grounds, the development benefits from private access to one of London's most cherished green spaces Brockwell Park perfect for morning jogs, weekend strolls, or enjoying the iconic 1930s Lido and its excellent sports facilities.

Positioned for both privacy and convenience, the apartment is moments from a large supermarket and a host of independent cafés, restaurants, and pubs including local favourites like Naughty Piglets, Stir Coffee, and Hootananny.

Features

- Two bedrooms
- Two bathrooms
- Open plan living and kitchen area
- Secure gated development
- Close to Brockwell Park
- Excellent transport links

Council tax band D EPC rating C (79)





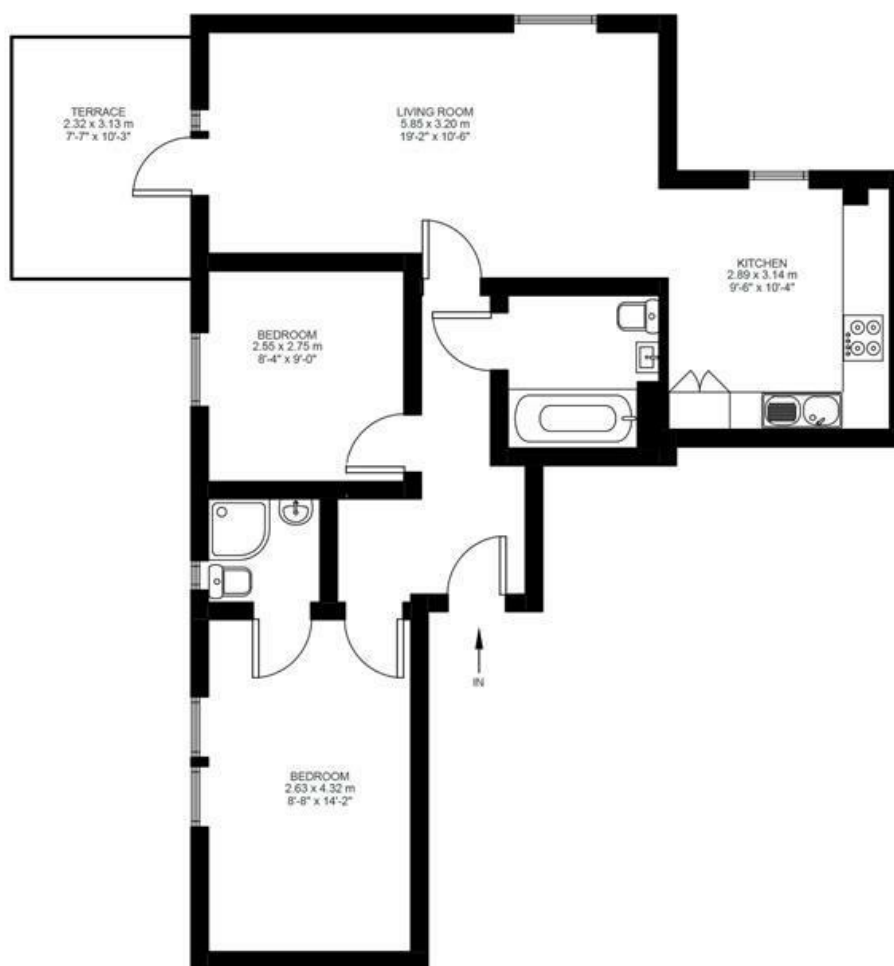
2 Bed flat

Approx internal area:

662 sqft 61 sqm

While we do try our very best, floor plans are produced as a guide only and we take no responsibility for the precise accuracy with which any property is represented

Tulse Hill



Fourth Floor



Tulse Hill, SW2

