

Beta Place, Clapham, SW4

1 bedroom flat - conversion for sale

£475,000

Share of Freehold

Property Details

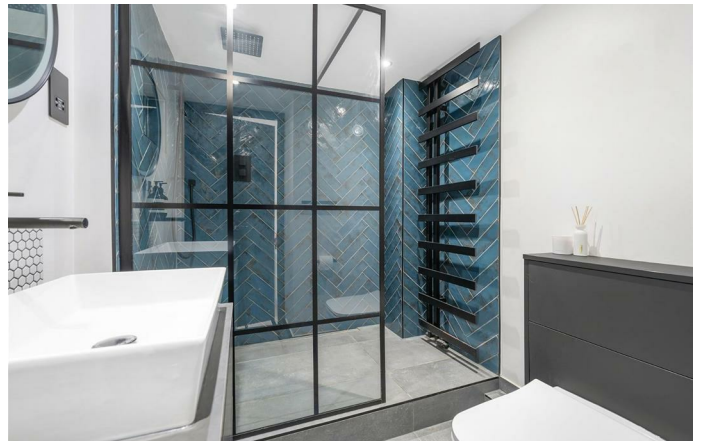
This exceptional one bedroom apartment is set within Alpha House, a secure, gated Grade II-listed Victorian school conversion, combining historical charm with modern living. The development offers extensive communal gardens, secure bike storage, an on-site gym, sauna, and allocated off-street parking. Tucked away in peaceful, beautifully maintained grounds between Clapham and Brixton, the location provides easy access to both neighbourhoods' vibrant scenes. At its heart, the apartment boasts a striking open-plan reception with double-height ceilings and large sash windows, filling the space with natural light. A mezzanine level adds architectural character, overlooking the spacious living and dining area. The modern kitchen features sleek cabinetry and wraparound worktops, with ample space for a full-sized dining table. Upstairs, the mezzanine-level bedroom is bright, neutrally decorated, and overlooks the reception below. A contemporary bathroom with a walk-in shower completes the home. Pet-friendly and secure, the community offers a tranquil escape with superb transport links, green spaces, and cultural hotspots nearby.

Council tax band D

EPC rating D (61)

Features

- One bedroom
- Victorian school conversion
- Grade II-listed
- 701 square feet of internal space
- Gym and sauna on-site
- Allocated off-street parking
- Expansive communal grounds
- A ten minute stroll to both Clapham and Brixton centres
- Northern and Victoria Lines
- Share of freehold

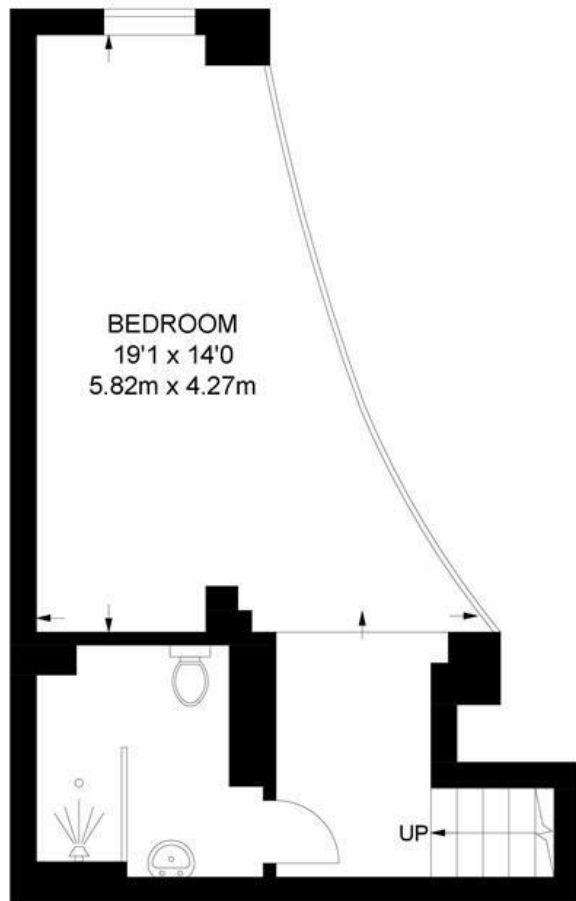




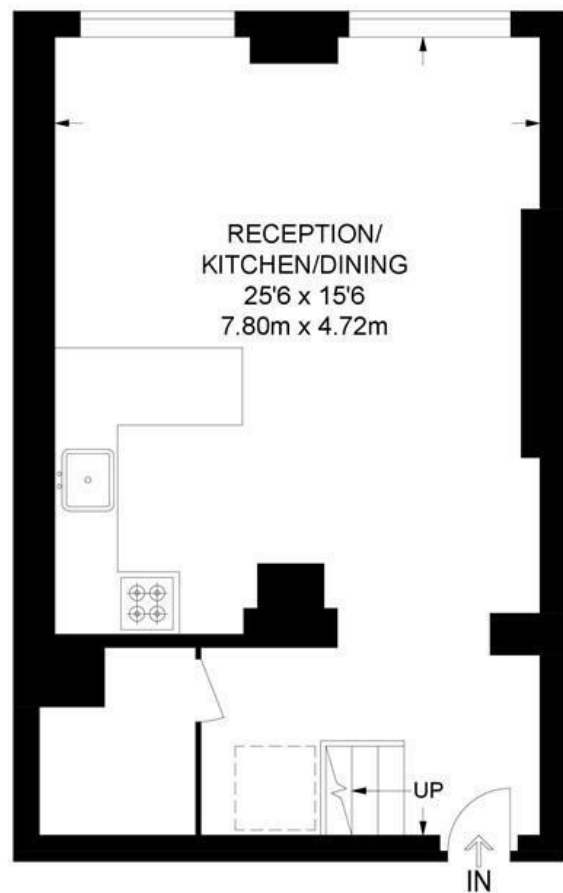
Beta Place, Clapham, SW4

Alpha House, SW4 1 Bedroom Flat

APPROXIMATE GROSS INTERNAL AREA: 701 SQ FT / 65 SQ M



MEZZANINE



FIRST FLOOR



While we try our very best, floor plans are produced as a guide only and we take no responsibility for the precise accuracy with which any property is represented.

Beta Place, Clapham, SW4

