

**Wingford Road, Brixton, SW2**

2 bedroom maisonette for sale

**£520,000**

Share of Freehold

## Property Details

A characterful two double bedroom Victorian maisonette with a private garden and its own entrance. Lovingly maintained by the current vendors, the home has enjoyed a number of thoughtful updates including replacement windows (bar the bathroom), a new boiler, dipped and stripped interior doors, bathroom roof works and tasteful redecoration throughout. Arranged over the upper floors, the property offers over 600 square feet of stylish living space plus a demised loft. A spacious reception room sets a welcoming tone with engineered wooden flooring, bespoke shelving, and the proportions to accommodate dining. The separate kitchen blends Shaker cabinetry with contemporary finishes, leading to a charming terrace and staircase down to the private garden. A tranquil retreat, the garden offers paved and decked areas, mature planting and space to dine al fresco. Two bedrooms complete the home, the principal with fitted wardrobes and fireplace, the second a versatile spot, currently a home office. With a demised loft, there's also exciting potential to extend as others on the street have (STPP).

Council tax band C    EPC rating C (73)

## Features

- Two bedrooms
- Private landscaped garden
- Victorian maisonette
- Own private entrance
- Demised loft with potential to extend (STPP)
- Quiet residential street
- Local pub, shops and amenities
- Walking distance to Brixton and Clapham High Streets, plus Abbeville Village
- Northern and Victoria tube lines
- Share of freehold





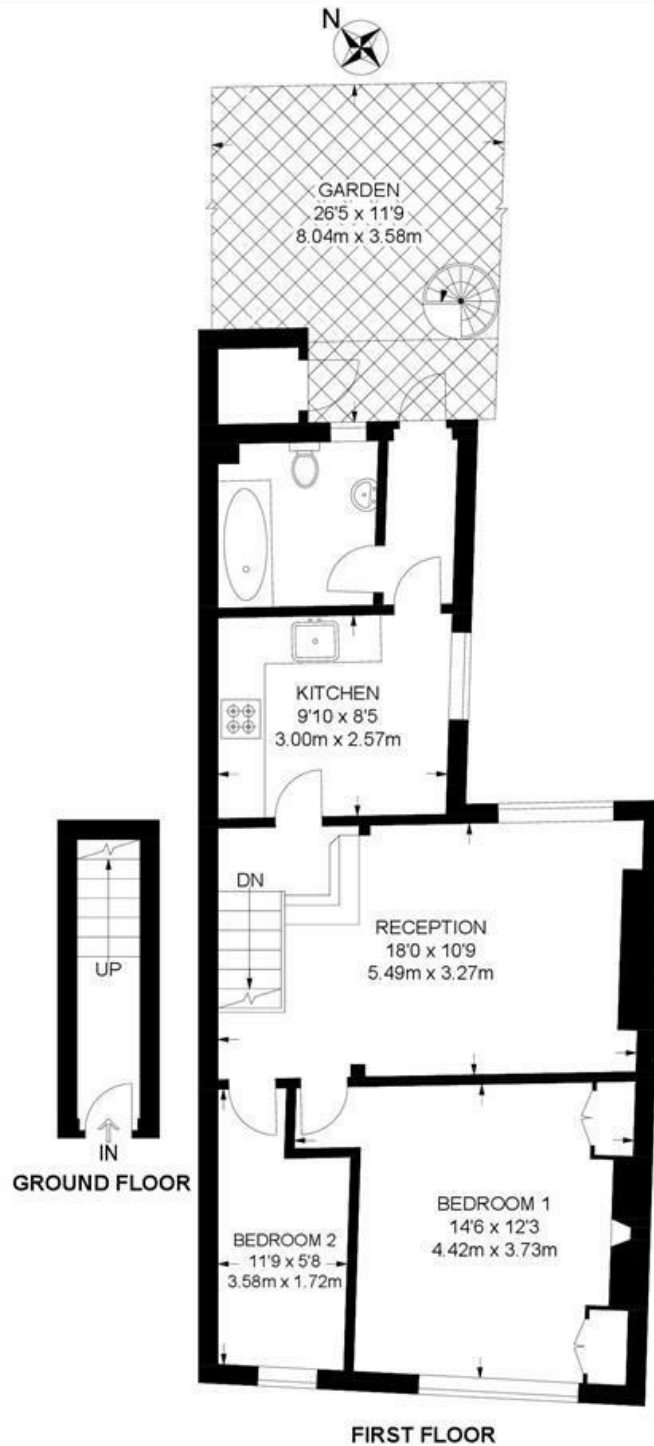




Wingford Road, Brixton, SW2

**Wingford Road, SW2**  
**2 Bedroom Flat**

APPROXIMATE GROSS INTERNAL AREA: 609 SQ FT / 57 SQ M



While we try our very best, floor plans are produced as a guide only and we take no responsibility for the precise accuracy with which any property is represented.

Wingford Road, Brixton, SW2

