



**Bellefields Road, Brixton, SW9**

2 bedroom maisonette for sale

**£775,000**

Share of Freehold

## Property Details

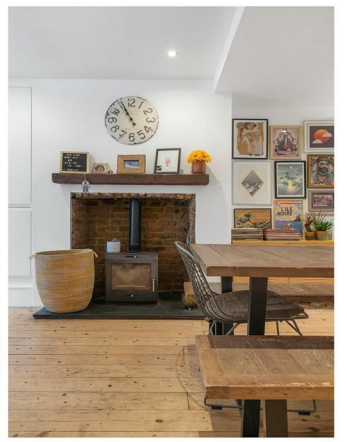
A fantastically charming two double bedroom, two bathroom Victorian maisonette with a private entrance, a generous garden, and a tranquil private terrace, ideally located in a desirable residential setting. Spanning over 900 square feet, this beautifully presented home unfolds across two floors. The ground floor boasts an expansive open-plan reception, over ten metres in length, with stripped wooden floors, recessed lighting, a wood-burning stove, and a striking exposed brick fireplace. To the rear, the sleek kitchen is defined by handle-less white cabinetry, wooden worktops, skylights, and a glazed door leading to the lovingly landscaped garden—ideal for entertaining or quiet retreat. Also on this level is a stylish bathroom and useful storage. Upstairs, two spacious double bedrooms await, the principal with a grand bay window and calming tones, while the second opens onto a delightful private terrace. A shower room with monochrome floor completes the upstairs. Rich in period charm, this elegant maisonette offers a unique blend of character, space, and outdoor living. Early registration of interest is highly recommended.

## Features

- Two double bedrooms
- Two bathrooms
- Large private garden and additional bedroom terrace
- Victorian maisonette with private entrance
- Wood burning stove
- Over 900 square feet
- Desirable location in the heart of vibrant Brixton
- Victoria line at Brixton tube a four-minute stroll
- Chain-free

Council tax band C    EPC rating C (71)









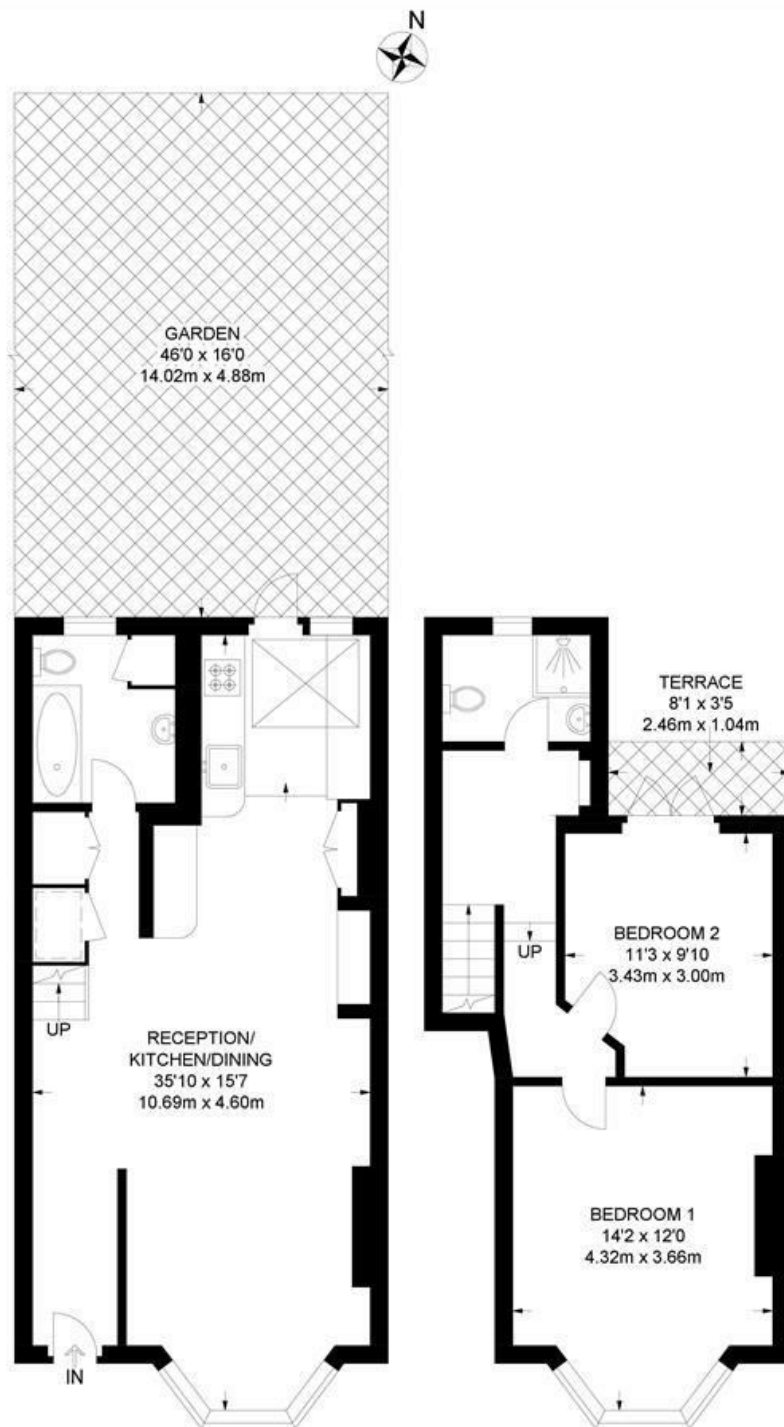


Bellefields Road, Brixton, SW9

**Bellefields Road, SW9**

**2 Bedroom Flat**

APPROXIMATE GROSS INTERNAL AREA: 922 SQ FT / 85.6 SQ M



LOWER GROUND FLOOR

RAISED GROUND FLOOR

While we try our very best, floor plans are produced as a guide only and we take no responsibility for the precise accuracy with which any property is represented.

Bellefields Road, Brixton, SW9

