



Endymion Road, Brixton, SW2

4 bedroom house to let

£850 Per Week

Part furnished

Property Details

Keating Estates are proud to present this beautiful, high spec three bedroom with a study/office room located just off Brixton Hill in one of the areas most sought after, lovely, quiet pockets of residential streets and just minutes away from all that central Brixton has to offer makes this property a perfect opportunity for both families or sharers alike.

There is ample space throughout for a comfortable lifestyle and you have the advantage of pretty fixtures and fittings throughout. Entering on the ground floor you will find the welcoming living room with bay window overlooking the pretty front garden. Through towards the rear you go past a downstairs WC and through to the spacious brand new kitchen / diner which is flooded with natural light. Out through double sliding doors and you are in the well kept private garden which lends itself perfectly to summer entertaining and relaxing. A huge benefit comes in the form of solar powered electricity to help keep those pesky bills down!

Upstairs you have two very large double bedrooms and the third is a study/office room along with the family bathroom and the top floor loft has been converted into a superb double bedroom along with a second sizeable shower room.

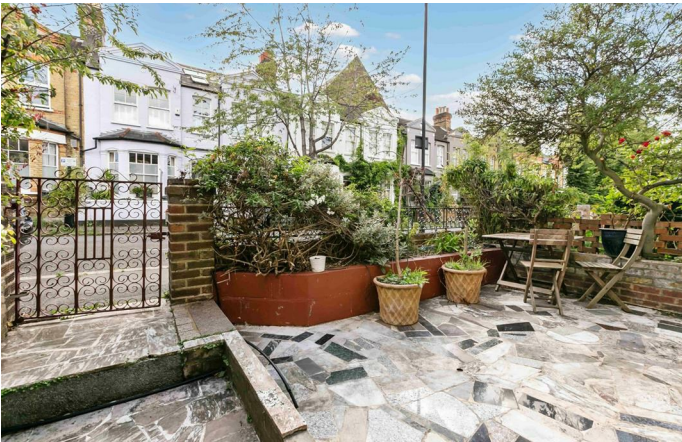
Having access to a green space is now more important than ever for our wellbeing – luckily, the lush, open spaces of the award-winning Brockwell Park are right next to the property, along with its iconic

Features

- Three bedrooms with study room
- Perfect for families or sharers
- Modern integrated kitchen
- Sleek bathroom
- Separate living room
- Private Garden
- HMO Licence ready
- Solar electricity panels

Council tax band E EPC rating C (80)





Endymion Road, Brixton, SW2

Endymion Road,
Brixton, SW2 2BT
4 bedroom house

Approximate internal area:

1485 sqft / 138 sqm

Approximate Eaves Storage area:

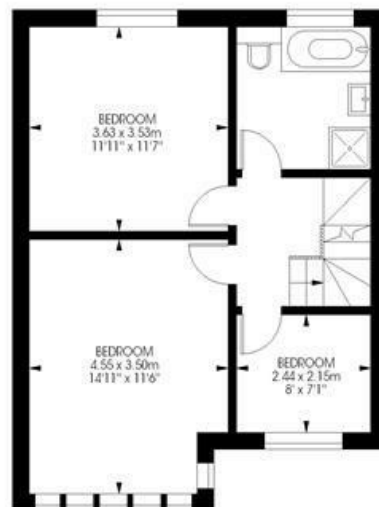
108 sqft / 10 sqm



Ground Floor



Second Floor



First Floor



While we try our very best, floor plans are produced as a guide only and we take no responsibility for the precise accuracy with which any property is represented.

Endymion Road, Brixton, SW2

