

Ducie Street, Brixton, SW4

2 bedroom flat to let

£507 Per Week

Furnished

Property Details

Keating Estates are delighted to present this stunning two double bedroom, split-level flat, situated on the top floor of a period conversion in the heart of Brixton. This bright and spacious property boasts a generous reception room, complete with a designated dining area—perfect for entertaining or relaxing after a long day. The separate modern kitchen is well-appointed with contemporary fittings and ample storage. Both bedrooms are comfortable doubles, ideal for sharers or those seeking additional space for a home office. One of the bedrooms further benefits from direct access to a private roof terrace, offering a peaceful outdoor retreat with skyline views. The property also features a sleek, modern family bathroom and is flooded with natural light throughout. Located just a short stroll from Brockwell Park, residents will enjoy access to the Lido, open green spaces, and a host of popular pubs and cafes nearby. Excellent transport links include Herne Hill station (Overground) and Brixton Underground station (Victoria Line), providing swift access across London.

Features

- Two bedroom
- Spacious
- Close to Central Brixton and Clapham
- Close to transport Links
- Split-level
- Bright and airy throughout
- Private terrace

Council tax band D EPC rating C (71)



Ducie Street, Brixton, SW4



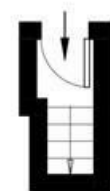
2 Bed flat

Approx internal area:

784 sqft 73 sqm

While we do try our very best, floor plans are produced as a guide only and we take no responsibility for the precise accuracy with which any property is represented

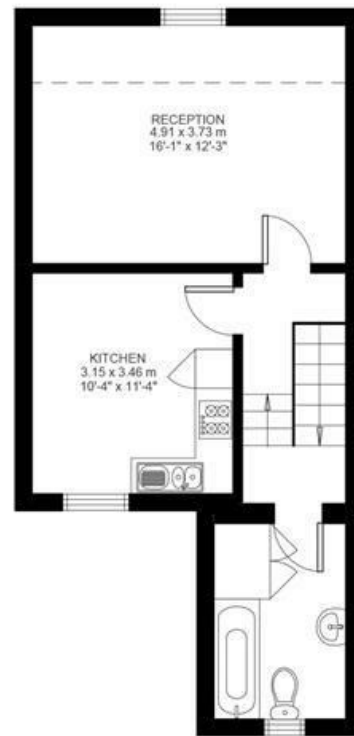
Ducie Street



Ground Floor



First Floor



Second Floor



Ducie Street, Brixton, SW4

