



## Nevinson Close, Wandsworth, SW18

3 bedroom house to let

£646 Per Week

Furnished

### Property Details

Keating Estates are delighted to present this beautifully presented three-bedroom semi-detached home, quietly positioned in a charming cul-de-sac within the sought-after John Archer Way development just moments from the open green expanse of Wandsworth Common.

This attractive property offers a perfect balance of comfort, practicality, and location. The ground floor features a smart and inviting reception room with ample space for both relaxing and dining, opening directly onto a private rear garden ideal for unwinding or entertaining during the warmer months. A separate, sleek, and modern kitchen completes the ground floor.

Upstairs, the property boasts three well-proportioned double bedrooms, alongside a stylish, contemporary family bathroom. Further benefits include a private garage, providing excellent storage.

Positioned within the peaceful and modern John Archer Way community, Nevinston Close is just a short stroll from Wandsworth Common, offering tennis courts, cricket pitches, scenic walking paths. Residents also enjoy convenient access to Clapham Junction and Wandsworth Town stations (both within 10-15 minutes), as well as frequent bus links from nearby Trinity Road.

### Features

- Three bed
- Town House
- Private Garden
- Prime Location
- Close to Wandsworth Common
- Short Walk to Northcote Road
- Short Walk to Clapham Junction

Council tax band F      EPC rating D (63)





Nevinson Close, Wandsworth, SW18

**Nevinson Close, SW18**  
**3 Bedroom House**

APPROXIMATE GROSS INTERNAL AREA :  
(INCLUDING GARAGE & SHED)

1203 SQ FT / 111.76 SQ M

GARAGE :

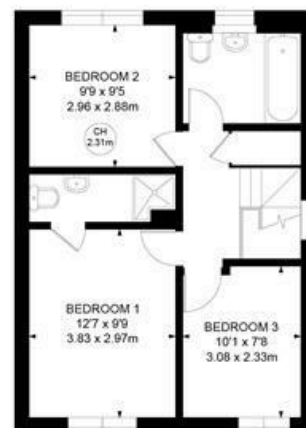
145 SQ FT / 13.44 SQ M

SHED :

151 SQ FT / 14.00 SQ M



GROUND FLOOR



FIRST FLOOR



While we try our very best, floor plans are produced as a guide only and we take no responsibility for the precise accuracy with which any property is represented.



Nevinson Close, Wandsworth, SW18

