



St. Martin's Road, Stockwell, SW9

£350,000

1 bedroom flat - conversion for sale

Share of Freehold

Property Details

A well-presented and naturally bright one double bedroom flat, arranged over the first floor of a handsome Victorian terraced house on a quiet, tree-lined road within the sought-after Stockwell Conservation Area. Ideally located, the property offers a peaceful setting just moments from the Northern and Victoria lines at Stockwell Station and the amenities of Clapham Road. Thoughtfully designed to maximise space, the layout benefits from high ceilings which enhance the sense of light and airiness throughout. The heart of the home is the semi-open plan kitchen and reception, an inviting space perfect for relaxing or entertaining. South-West facing sash windows flood both areas with natural light, the lounge is complemented by wooden flooring and a feature wall of floating shelves. The shaker-style kitchen runs along both walls, providing practicality and generous worktops, finished with metro tiling, open shelving and leafy views. Set peacefully to the rear, the double bedroom also enjoys verdant outlooks and ample storage, while the neatly tiled bathroom with shower cubicle completes this charming home. Combining period character with modern practicality, it is ideal for first-time buyers, investors or as a pied-à-terre.

Council tax band C

EPC rating D (64)

Features

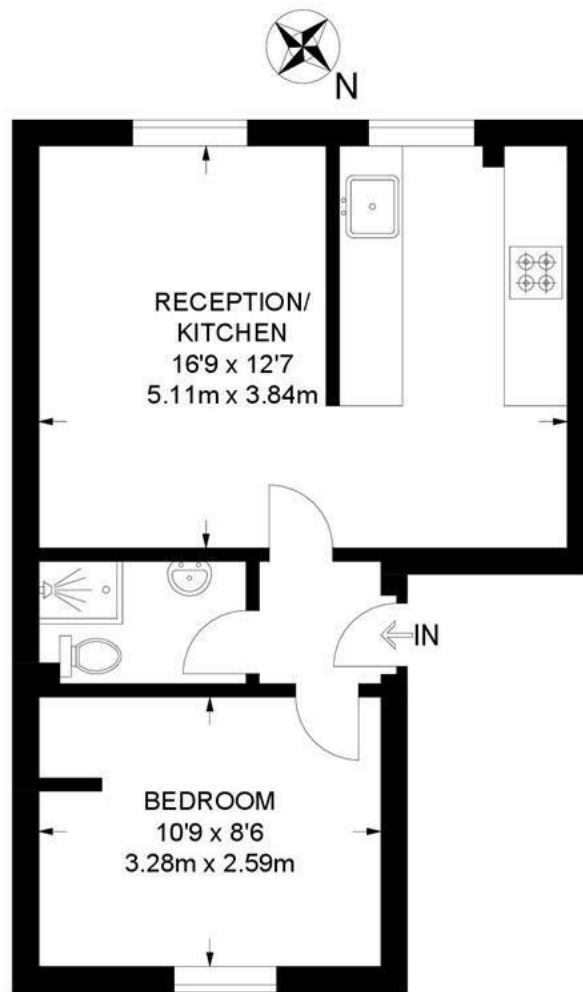
- One double bedroom
- Victorian conversion
- South-West facing kitchen and reception
- Bright and airy ambience
- Sought-after Stockwell Conservation Area
- Northern and Victoria Line a five-minute stroll at Stockwell Station
- Central Brixton a twelve-minute walk away
- Clapham High Street a fifteen-minute amble
- Share of freehold. Chain-free



St. Martin's Road, Stockwell, SW9

St Martin's Road, SW9 1 Bedroom Flat

APPROXIMATE GROSS INTERNAL AREA: **356 SQ FT / 33.1 SQ M**



FIRST FLOOR



While we try our very best, floor plans are produced as a guide only and we take no responsibility for the precise accuracy with which any property is represented.

St. Martin's Road, Stockwell, SW9

