



**Barrington Road, Brixton, SW9**

2 bedroom flat - penthouse to let

**£600 Per Week**

Unfurnished

## Property Details

Keating Estates are delighted to present this stunning two-bedroom penthouse apartment, with a substantial, larger than average wrap-around private roof terrace. Set on the top floor of a modern development on Barrington Road, this energy efficient home boasts excellent insulation, ensuring minimal noise and lower heating costs year-round.

This apartment stands out from the competition with lovely views across the London skyline. Natural light is a running theme throughout this stunning apartment, with floor-to-ceiling windows glazed to the highest modern energy standards.

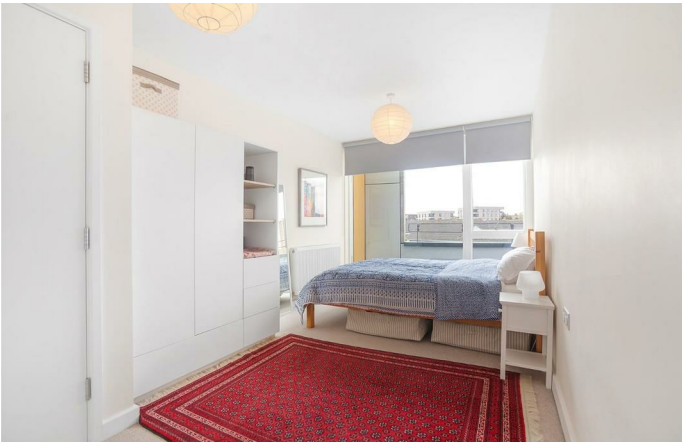
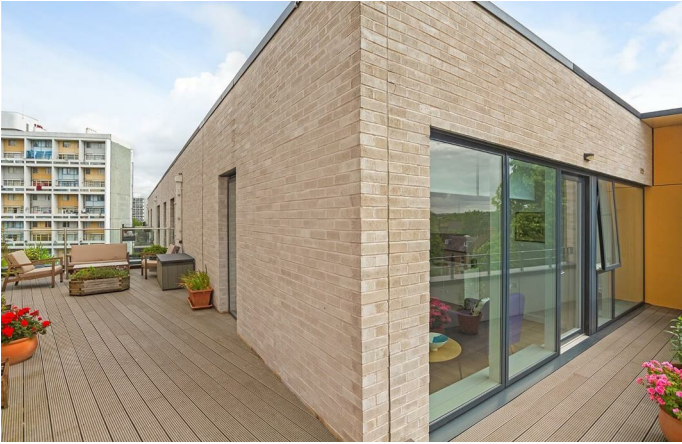
Forming the heart of the home, the reception room offers fantastic proportions, benefitting from all the advantages of modern open plan living and ample space to relax, cook, dine and entertain. The comfortable lounge area is the ideal place to unwind in the evening, accompanied by the lights of the cityscape, whilst the contemporary kitchen is fully integrated and neatly arranged within sleek cabinetry, still allowing room for a generous dining table.

A door leads out from the reception room onto the wraparound roof terrace, allowing the living space to flow seamlessly into this phenomenal, low-maintenance private outside area, which is the epitome of modern elegant living, perfect for al-fresco dining or simply drinking in the views over

## Features

- Two double bedrooms
- Penthouse apartment in a contemporary modern development
- Phenomenal wraparound roof terrace
- Views of the London skyline
- Over 800 square feet of internal living space
- Bright and airy atmosphere throughout
- A five-seven minute stroll to central Brixton and Brixton Village
- First stop on the Victoria Line at Brixton tube station
- Walking distance to Loughborough Junction Station

**Council tax band D**      **EPC rating B (86)**

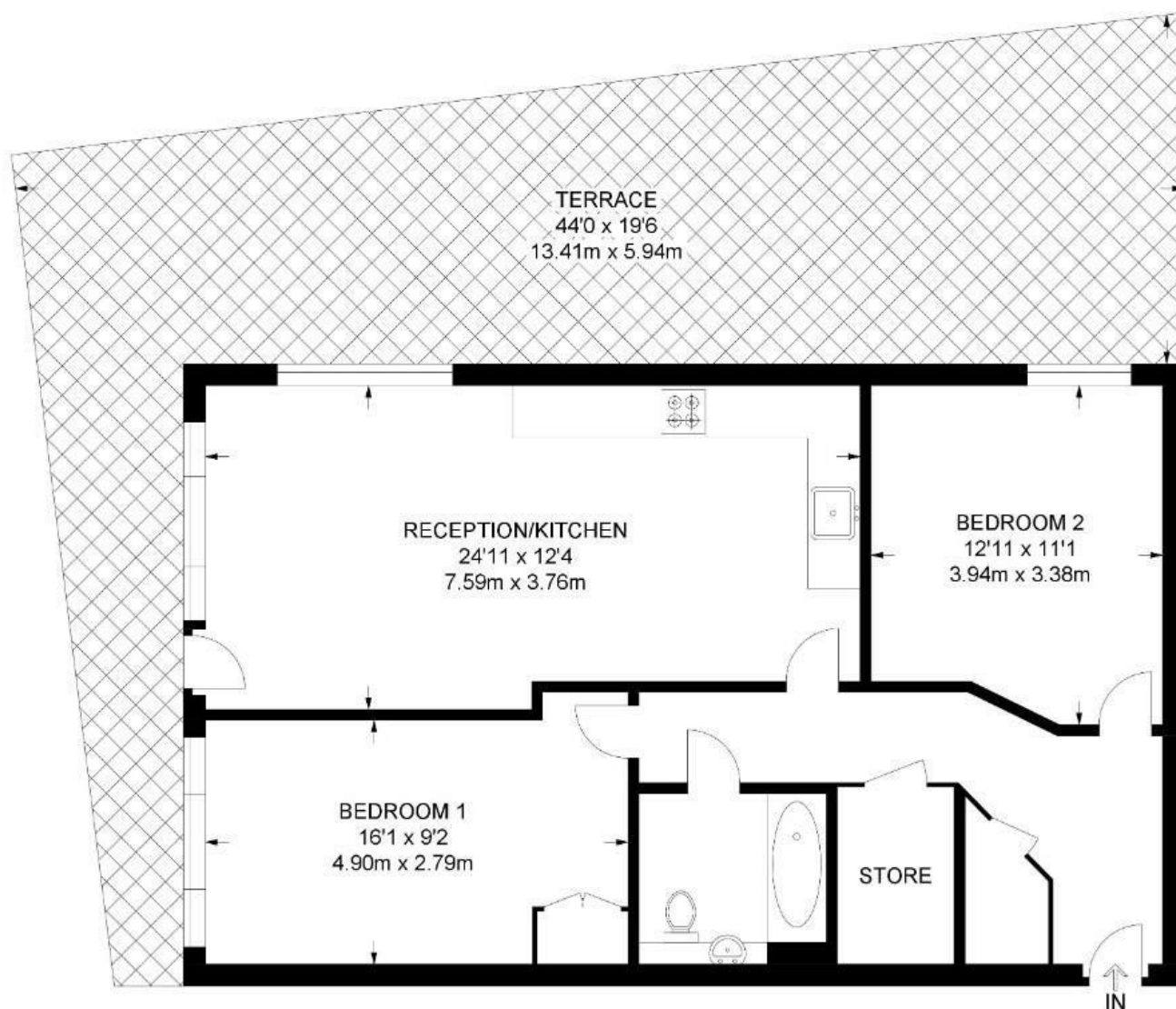


Barrington Road, Brixton, SW9

## Barrington Road, SW9

### 2 Bedroom Flat

APPROXIMATE GROSS INTERNAL AREA: **807 SQ FT / 74.9 SQ M**



FOURTH FLOOR



While we try our very best, floor plans are produced as a guide only and we take no responsibility for the precise accuracy with which any property is represented.

Barrington Road, Brixton, SW9

