



Morrish Road, Brixton, SW2

3 bedroom flat - conversion for sale

£495,000

Share of Freehold

Property Details

A versatile three double bedroom split-level Victorian apartment with a South-West facing roof terrace. Arranged over two floors, this charming home offers generous proportions, period character and flexible living, complete with a private outdoor retreat. The bright open-plan kitchen and reception is the heart of the home, with large sash windows flooding the space with light. Wrap-around kitchen cabinetry frames the dining area, offering excellent storage and a sociable layout, while the lounge is finished in neutral tones with sisal flooring for a calming, relaxed feel. The private South-West facing roof terrace is a standout feature, drenched in sunlight and enjoying rooftop views. With precedent set for dormer extensions locally, there's potential to create door access, subject to permissions. All three bedrooms are spacious doubles, two particularly generous with scope for lounge and desk areas, complemented by charming features. Recently decorated with new carpets, the home is ready to move into whilst offering scope to update the kitchen and bathroom to suit modern tastes if desired.

Council tax band

EPC rating D (57)

Features

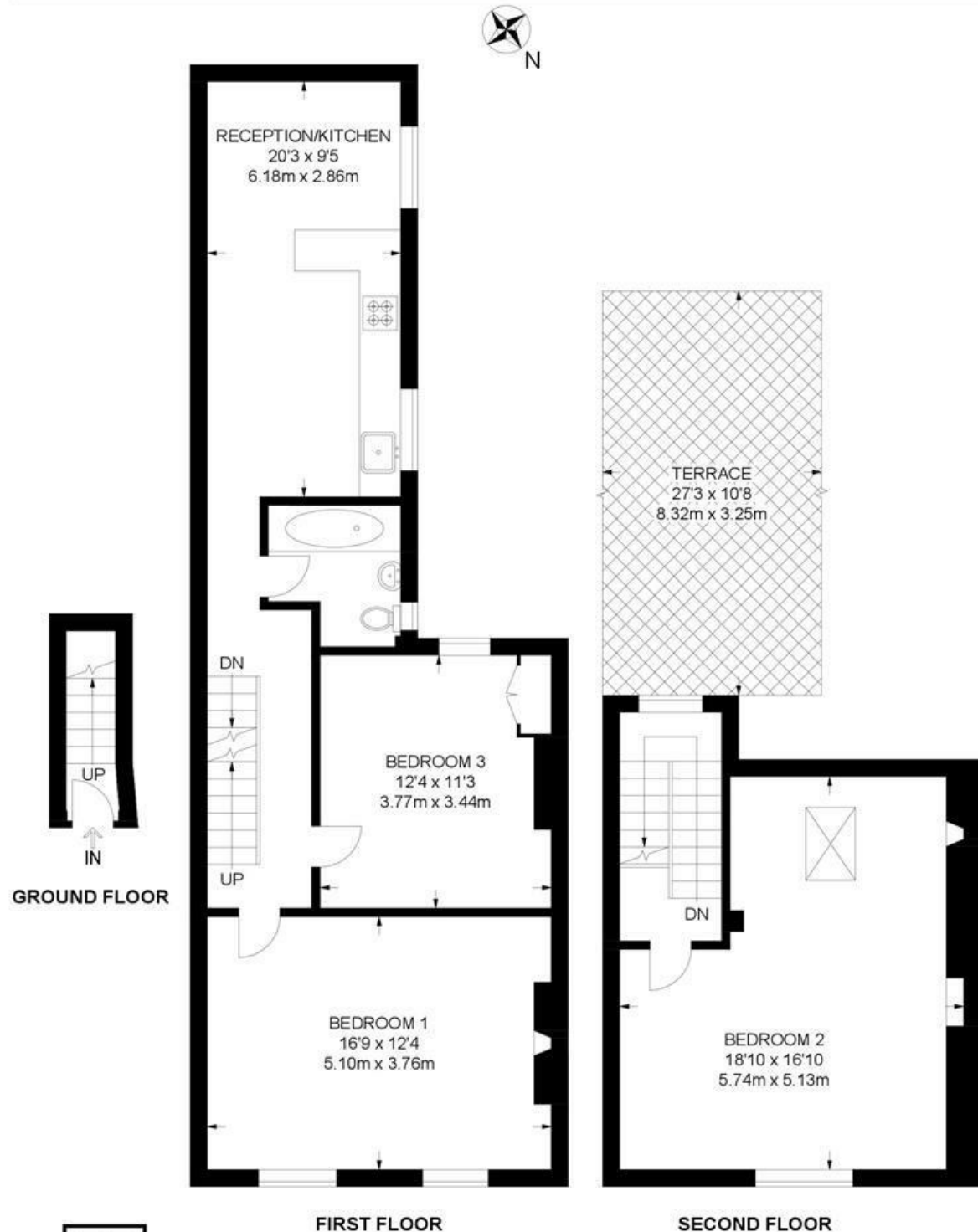
- Three double bedrooms
- South-West facing roof terrace
- Victorian conversion
- Bright and airy
- Neighbourly road with street party and book club
- Proximity to Brixton, Streatham Hill and Balham
- Brixton a fifteen-minute walk or five-minute bus
- Streatham Hill an eight-minute walk
- Share of freehold
- Chain-free



Morrish Road, Brixton, SW2

Morrish Road, SW2
3 Bedroom Flat

APPROXIMATE GROSS INTERNAL AREA: 1047 SQ FT / 97.3 SQ M



While we try our very best, floor plans are produced as a guide only and we take no responsibility for the precise accuracy with which any property is represented.

Morrish Road, Brixton, SW2

