



Saltoun Road, Brixton, SW2

2 bedroom flat - conversion for sale

£675,000

Share of Freehold

Property Details

A wonderfully bright and spacious two double bedroom, two bathroom apartment with two generous reception rooms, arranged over the upper floors of an attractive Victorian property. Offering over 1,050 square feet, this beautifully maintained home combines period charm with modern upgrades and a versatile split-level layout. The expansive kitchen-diner spans the width of the home, with three sash windows flooding the space with light. Sleek cabinetry, wooden worktops and cohesive flooring create a stylish yet practical setting, ideal for entertaining or everyday dining. A magnificent top-floor reception, bathed in sunshine from skylights, provides a superb lounge, work-from-home area, or even a potential third bedroom. Both bedrooms are generous doubles. The principal is particularly impressive, having been extended and upgraded with plush carpeting and high-quality soundproofing, while the second enjoys leafy views and the luxury of an en-suite. The main bathroom is tastefully finished with a bathtub and overhead rain shower. A unique and inviting home with impressive proportions and flexible living options.

Features

- Two double bedrooms
- Two bathrooms
- Two reception rooms
- Victorian conversion
- Over 1,050 square feet
- Split over multiple floors
- Central Brixton's vast array of amenities on the doorstep
- Victoria tube line a five-minute stroll
- Brockwell Park a ten-minute walk, leading through to Herne Hill
- Share of freehold

Council tax band C EPC rating D (66)



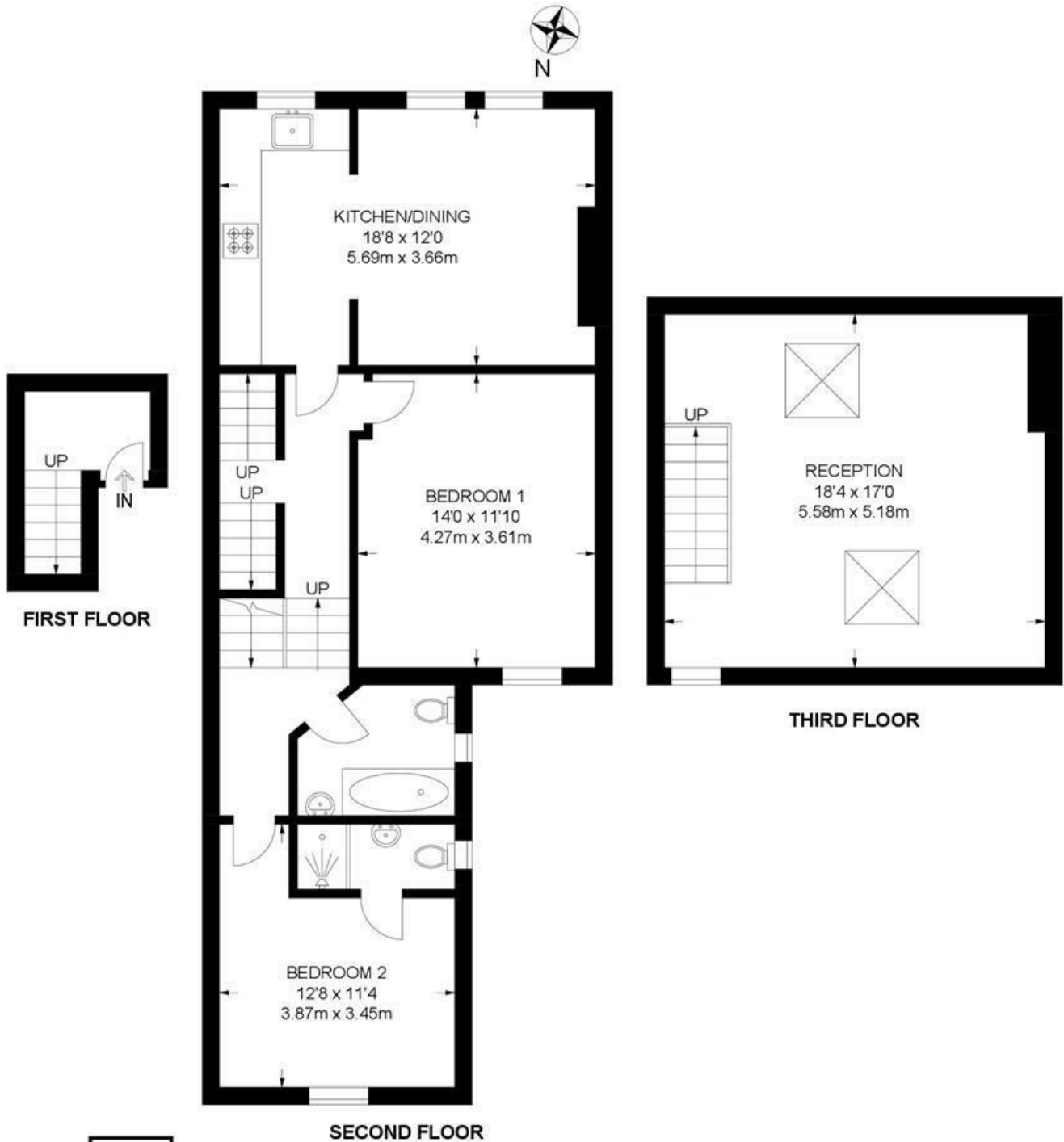


Saltoun Road, Brixton, SW2

Saltoun Road, SW2

2 Bedroom Flat

APPROXIMATE GROSS INTERNAL AREA: 1070 SQ FT / 99 SQ M



While we try our very best, floor plans are produced as a guide only and we take no responsibility for the precise accuracy with which any property is represented.

Saltoun Road, Brixton, SW2

