

Ratray Road, Brixton, SW2

2 bedroom flat - conversion to let

£496 Per Week

Furnished

Property Details

A beautifully presented two double bedroom flat, securely arranged on the first floor of an attractive Victorian conversion on ever-popular Ratray Road one of Brixton's most sought-after residential streets. Ideally located just a short walk from the Victoria Line at Brixton station and the area's vibrant cultural and culinary offerings.

The property boasts a particularly impressive living area that is bright, spacious, and airy with a sleek, modern kitchen featuring integrated appliances. Both bedrooms are well-proportioned doubles, and the stylish bathroom is finished with tasteful tiling.

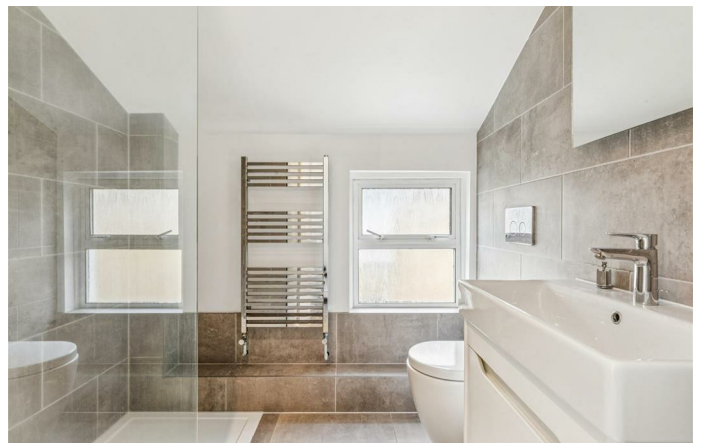
Living here offers the best of both worlds: the buzz of central Brixton, with its famous live music venues, nightlife, and the renowned Brixton Village and POP Brixton just moments away, combined with the calm, community feel of a leafy residential street. Just ten minutes in the opposite direction lies Herne Hill, offering village charm, an array of independent shops, pubs, a farmers market, and direct Thameslink connections. Brockwell Park, considered one of London's best green spaces, is also nearby home to the iconic 1930s Lido, sports facilities, and beautiful walking routes.

Ratray Road is perfect for those wanting easy access to Brixton's dynamic cultural scene while enjoying a peaceful, neighbourhood feel. Excellent transport links include the Victoria Line,

Features

- Two bed
- Spacious
- Bright and airy
- Conversion
- Close to transport
- Central Brixton

Council tax band EPC rating D (68)



Ratray Road, Brixton, SW2

Ratray Road, SW2

2 Bedroom Flat

APPROXIMATE GROSS INTERNAL AREA :

765 SQ FT / 71.06 SQ M



While we try our very best, floor plans are produced as a guide only and we take no responsibility for the precise accuracy with which any property is represented.



Ratray Road, Brixton, SW2

