

Brailsford Rd, Brixton, SW2

2 bedroom flat to let

£530 Per Week

Furnished

Property Details

This amazing two bedroom flat comes with its own private garden and is situated moments away from Brockwell park. Both bedrooms are good size doubles, the front bedroom offers large windows letting in heaps of natural light, it has the original fire place and original floorboards making this room full of character. The second bedroom is a spacious bright room with big double doors leading out to the private garden. The reception room has the original floor boards and fireplace providing this room with a warm and cosy feel and the kitchen is modern and bright with doors leading out the the garden.

Features

- Private garden
- Characterful features
- Moments away from brockwell park
- 8 minute walk to Herne Hill station
- Two bedroom
- Separate kitchen
- Bright and airy

Council tax band C EPC rating D (63)



Brailsford Rd, Brixton, SW2

K

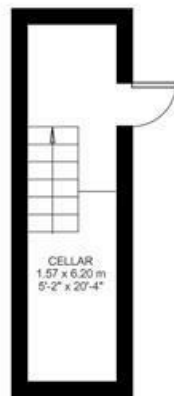
2 Bed flat

Approx internal area:

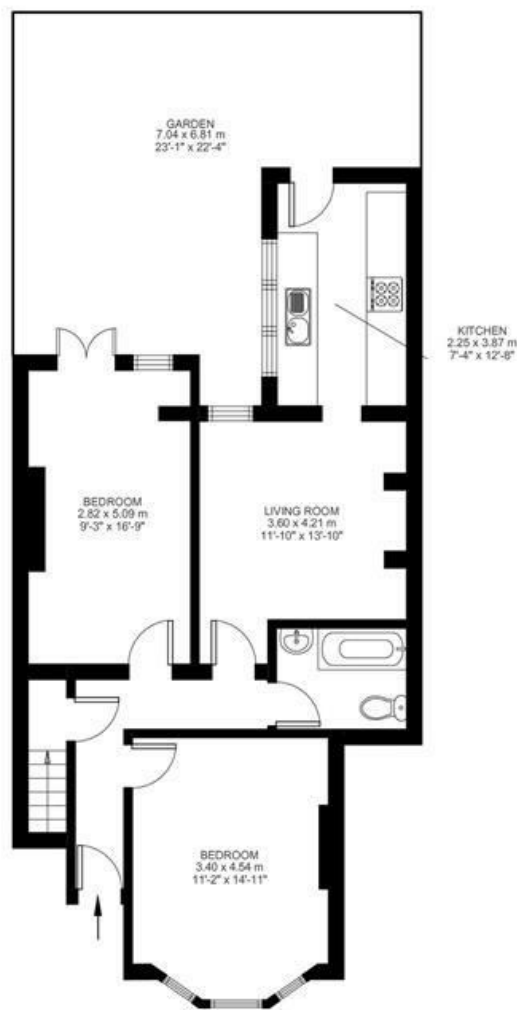
827 sqft 77 sqm

While we do try our very best, floor plans are produced as a guide only and we take no responsibility for the precise accuracy with which any property is represented

Brailsford Road



Basement



Ground Floor



Brailsford Rd, Brixton, SW2

