

Milton Rd, Herne Hill, SE24

2 bedroom flat to let

£470 Per Week

Unfurnished

Property Details

This is a characterful two double bedroom flat on the first floor of an attractive Victorian converted house, nestled on a quiet road in a popular residential pocket in the heart of Poet's Corner.

The separate reception room boasts plenty of charm with double sash windows that flood the space with a bright and airy atmosphere plus there is plenty of room to relax, dine, entertain and unwind. The reception room sits in between the two evenly proportioned double bedrooms, creating a desirable level of privacy, ideal for sharers or a couple looking to convert this room to a home office. The two double bedrooms share a modern bathroom and last but not least there is a separate utility room and a wonderful kitchen that opens out onto a fantastic roof terrace.

Milton Road is situated in the heart of Poets' Corner, a highly desirable residential pocket of roads between Herne Hill and Brixton. Herne Hill station is a six-minute walk with access to Canary Wharf and Victoria within minutes. The celebrated Herne Hill establishments are close-by and the restaurants and shops within the lauded Brixton Village, the amenities of the high street and Brixton Station are a twelve-minute stroll. The green, open spaces of Brockwell Park are literally at the end of the road, along with its fantastic 1930's Lido.

Features

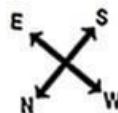
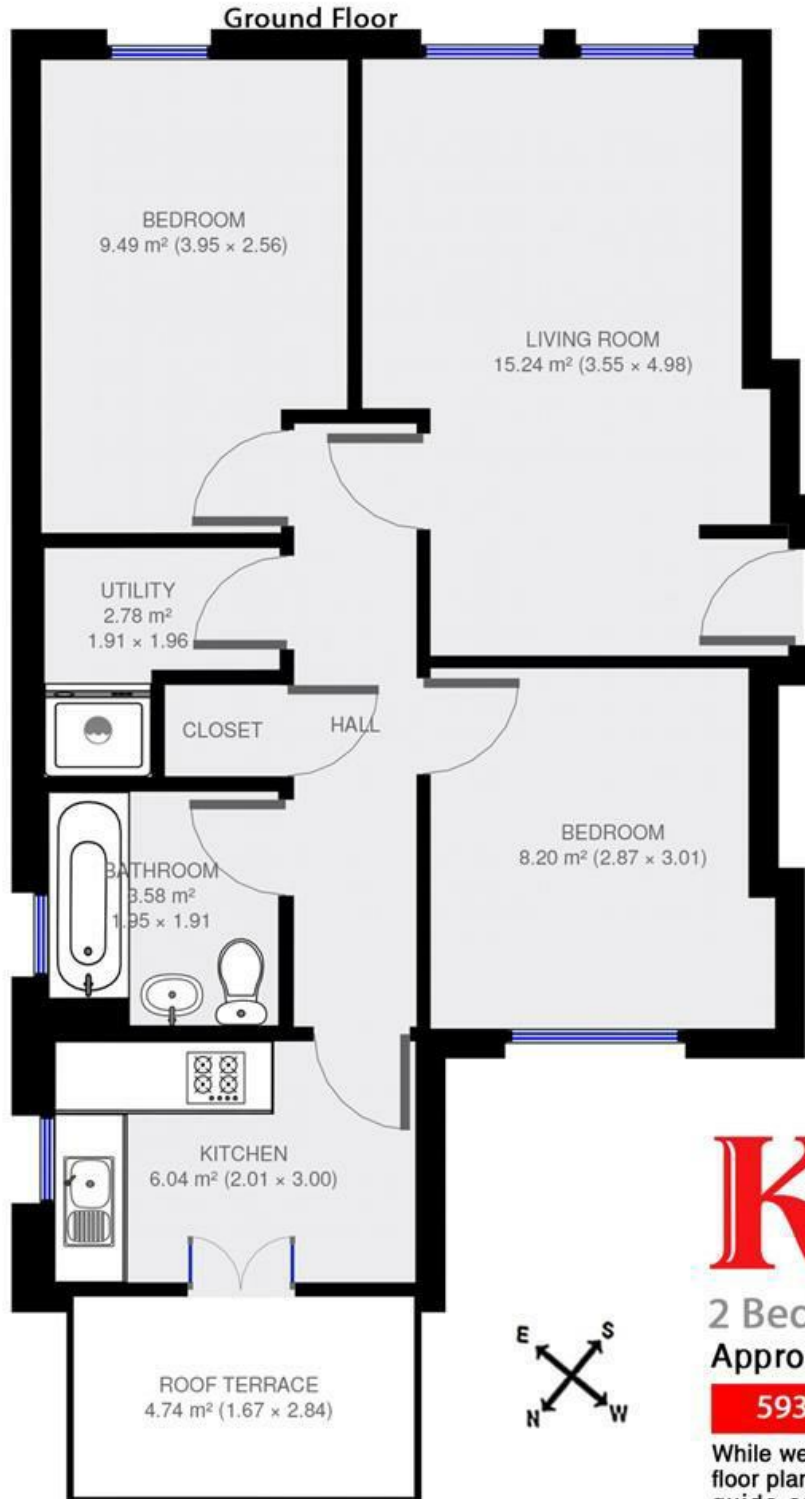
- Two double bedrooms
- Victorian conversion
- Private roof terrace
- Sought-after location
- Highly desirable road
- Brockwell Park at the end of the road

Council tax band C **EPC rating D (66)**



Milton Rd, Herne Hill, SE24

Milton Road



2 Bed Flat.

Approx internal area:

593 sqft 55 sqm

While we do try our very best, floor plans are produced as a guide only and we take no responsibility for the precise accuracy with which any property is represented

Milton Rd, Herne Hill, SE24

