



**Ingleborough Street, Stockwell, SW9**

2 bedroom flat - purpose built to let

**£392 Per Week**

Unfurnished

## Property Details

Keating Estates are proud to present this stunning two double bedroom flat, ideally located just moments from the vibrant hubs of both Brixton and Stockwell. This highly sought-after area is known for its excellent connectivity and abundant amenities.

The property has been tastefully redecorated throughout and offers a warm, inviting ambience. The spacious reception room features elegant wood flooring, creating a stylish yet comfortable living space. The kitchen is spacious, offering ample cupboard and storage space perfect for those who enjoy cooking or entertaining. The principal bedroom is a good-sized double, while the second bedroom also accommodates a double bed, making it ideal for use as a guest room, home office, or both. A sleek, contemporary bathroom completes the property.

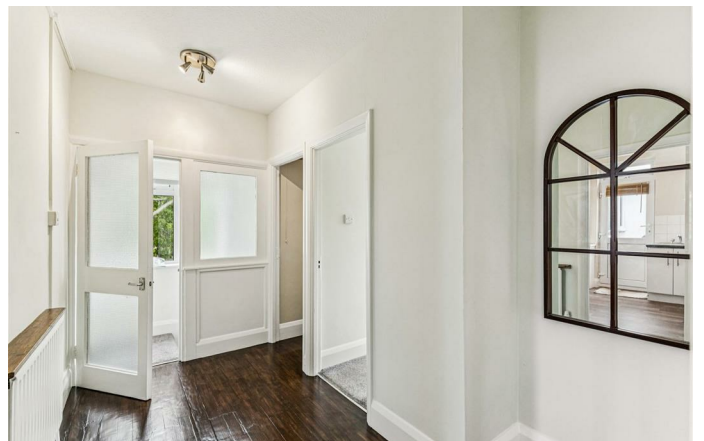
Transport links are excellent, with both the Northern and Victoria lines accessible from nearby Brixton and Stockwell underground stations. Numerous bus routes also serve the area, providing easy access across London. Local amenities are Brixton is known for its eclectic food scene, vibrant nightlife, and popular venues like Brixton Village and Pop Brixton. You're also within a 15-minute walk of Clapham High Street, where you'll find even more cafes, restaurants, the Picturehouse Cinema, Clapham Common, and access to both the Northern Line and London Overground.

**Council tax band**      **EPC rating C (74)**

## Features

- Two bed
- Spacious
- Newly decorated
- Prime location
- Close to transport links
- Close High amenities





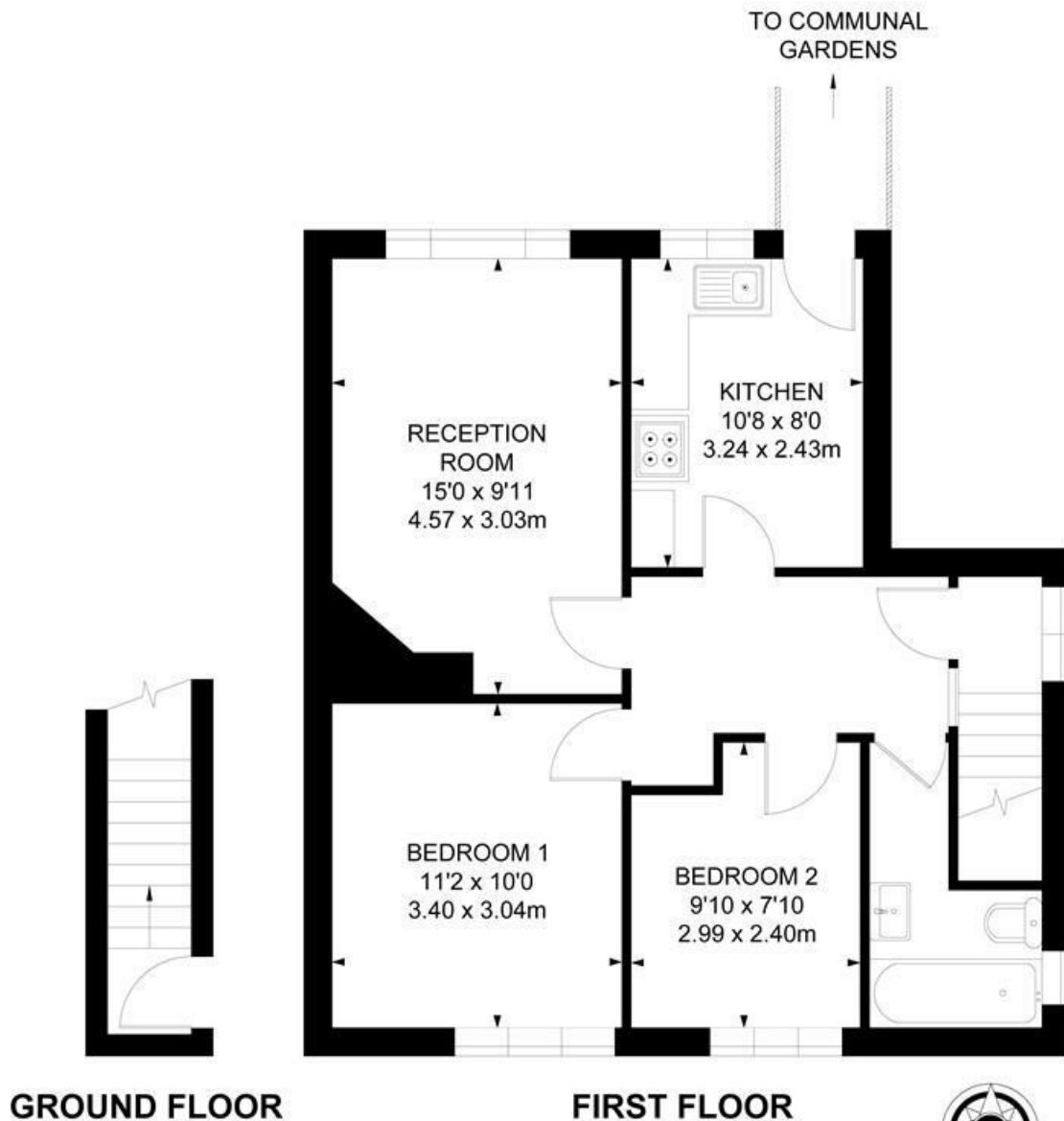
Ingleborough Street, Stockwell, SW9

## Ingleborough Street, SW9

### 2 Bedroom Flat

APPROXIMATE GROSS INTERNAL AREA :

613 SQ FT / 56.98 SQ M



While we try our very best, floor plans are produced as a guide only and we take no responsibility for the precise accuracy with which any property is represented.



Ingleborough Street, Stockwell, SW9

