

St. James's Crescent, Brixton, SW9

2 bedroom flat - purpose built for sale

Leasehold

Property Details

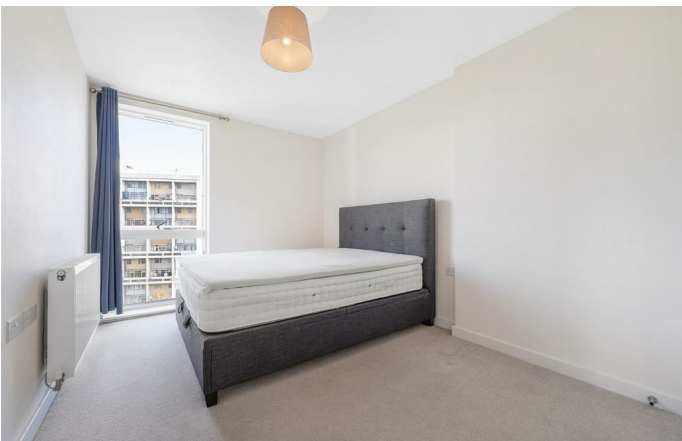
A striking two bedroom apartment with a private South-facing terrace, set on the sixth floor of a modern development in the heart of Brixton. Elevated above the rooftops, the home enjoys sweeping views, superb natural light, and a tranquil feel, whilst being moments from central Brixton. The generous open-plan reception forms the hub of the home, with expansive floor-to-ceiling windows flooding the space with light. A sleek, contemporary kitchen with integrated appliances wraps around the dining area, maintaining a social yet practical layout. Glass doors lead directly onto the private decked terrace, ideal for al-fresco dining or morning coffee whilst enjoying skyline views. Both bedrooms are comfortable doubles with floor-to-ceiling windows and neutral décor, the principal benefitting from fitted storage. A modern bathroom with bathtub and overhead shower complements the accommodation, while three hall cupboards ensure excellent storage. With communal grounds, a play park, and energy-efficient design, this stylish apartment offers space, light, and practicality, all just a short stroll from Brixton's vibrant amenities and transport links.

Features

- Two bedrooms
- South-facing private terrace
- Sixth floor setting with views across the rooftops
- Contemporary development
- Central Brixton a five-minute walk
- Victoria line a seven-minute walk
- Commute to most places in London in under 45 minutes
- Clapham, Stockwell and Herne Hill around a twenty-minute walk
- Chain-free

Council tax band D

EPC rating B (85)

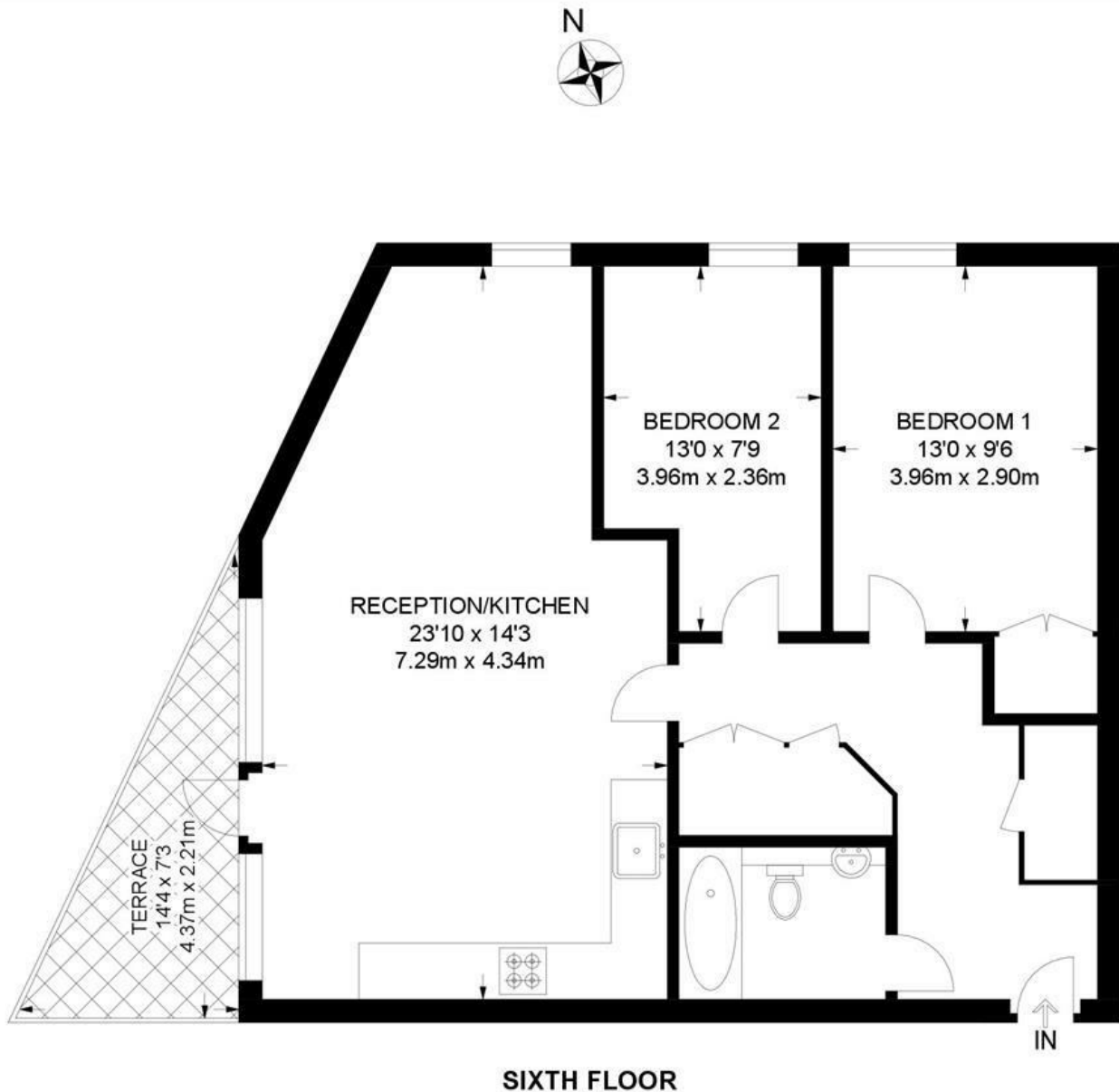




St. James's Crescent, Brixton, SW9

St. James's Crescent, SW9 2 Bedroom Flat

APPROXIMATE GROSS INTERNAL AREA: 773 SQ FT / 71.8 SQ M



While we try our very best, floor plans are produced as a guide only and we take no responsibility for the precise accuracy with which any property is represented.

St. James's Crescent, Brixton, SW9

