



**Milton Road, Herne Hill, SE24**

4 bedroom house for sale

**£1,500,000**

Freehold

## Property Details

An exceptional four double bedroom, two bathroom Victorian house with a beautifully landscaped private South-East facing garden, arranged over three spacious floors and nestled within the highly desirable Poets' Corner on Milton Road, a peaceful, leafy enclave in the heart of vibrant Herne Hill. This elegant family home seamlessly blends period charm with high-quality modern design. The ground floor boasts a dual-aspect reception with high ceilings, ornate cornicing, engineered oak flooring and a working fireplace. The space flows into a formal dining area and a striking architect-designed kitchen-diner with a central island, floor-to-ceiling glass, and a lightwell, creating a seamless connection to the private garden. A secondary lounge overlooks the Mediterranean-inspired two-tiered garden, complete with timber decking, built-in seating and an outdoor fireplace. Upstairs, four well-proportioned bedrooms include a luxurious principal suite with bespoke wardrobes and a stunning en-suite. A stylish family bathroom and guest WC complete the home. Ideally located moments from Brockwell Park, excellent schools, and the amenities of the village-esque Herne Hill.

## Features

- Four double bedrooms
- Two bathrooms plus downstairs WC
- SE facing landscaped garden
- Victorian freehold house
- Beautiful blend of architectural and period features plus a working fire
- Sought-after Poets Corner location
- Brockwell Park moments away
- Central Herne Hill with its village-esque vibe just a five-minute stroll
- Brixton a ten-minute walk
- Chain-free

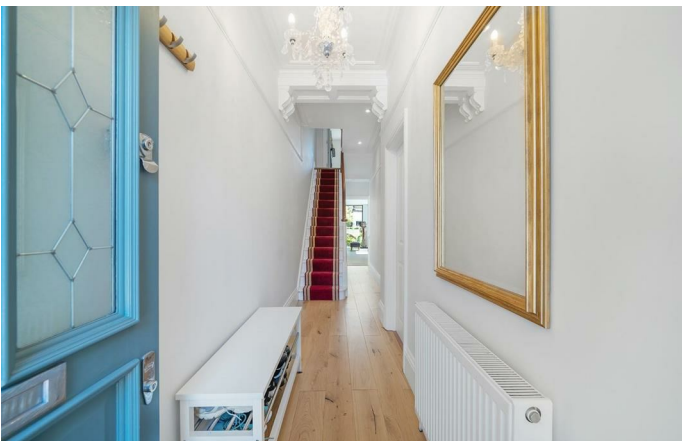
Council tax band E

EPC rating C (75)





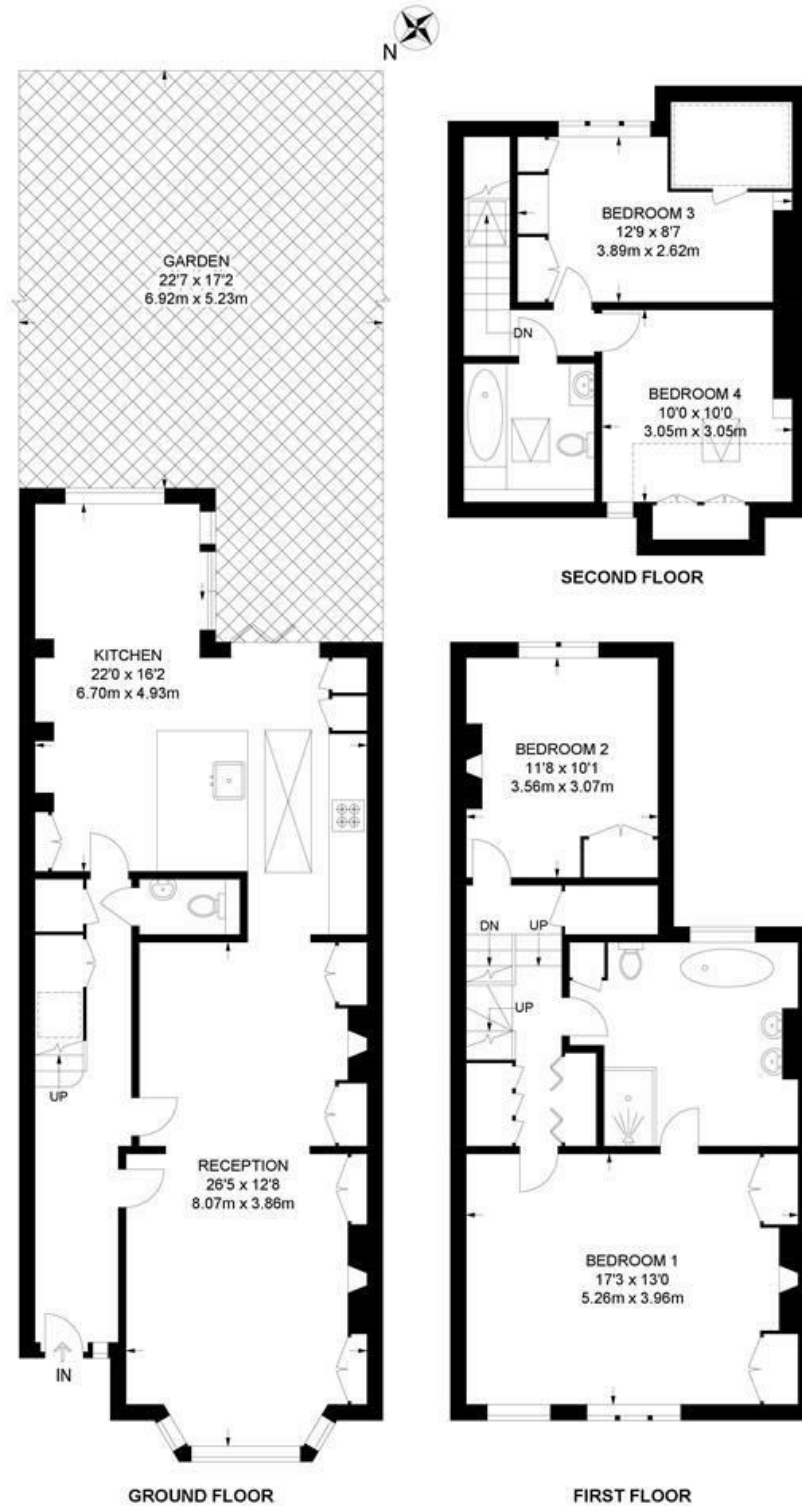




Milton Road, Herne Hill, SE24

**Milton Road, SE24**  
**4 Bedroom House**

APPROXIMATE GROSS INTERNAL AREA: 1687 SQ FT / 156.7 SQ M



While we try our very best, floor plans are produced as a guide only and we take no responsibility for the precise accuracy with which any property is represented.



Milton Road, Herne Hill, SE24

