



Solon Road, Brixton, SW2

3 bedroom flat - conversion for sale

£650,000

Share of Freehold

Property Details

This beautifully presented three double bedroom flat occupies the upper floors of a handsome Victorian house on a residential street. Combining generous proportions with a clever layout, it offers bright, versatile living space with modern comforts. An internal staircase leads up from the ground floor to the first, where a spacious open plan kitchen and reception room with multiple windows floods the space with natural light, providing ample room for relaxing, entertaining and dining. The sleek navy-blue shaker-style kitchen is well appointed with integrated appliances, plentiful storage and generous worktops. On the first floor are two bedrooms, one to the rear with leafy outlooks, built-in wardrobes and a discreet Murphy bed for flexible use as a guest room or office, and a second adjacent bedroom. The main bathroom serves this floor, complete with a bath and overhead shower. The top floor is dedicated to the principal suite, with leafy views and a striking blue-tiled en-suite shower room. This wonderful flat also boasts a demised and boarded loft space with concertina laddered stairs for convenient access.

Features

- Three double bedrooms
- Two bathrooms
- Victorian conversion
- Split-level
- Demised loft with concertina stairs
- Over 750 square feet of internal space
- Victoria and Northern tube lines both a short stroll away
- Residential street an equal distance to Brixton and Clapham High Streets
- Share of freehold
- Chain-free

Council tax band C

EPC rating C (74)

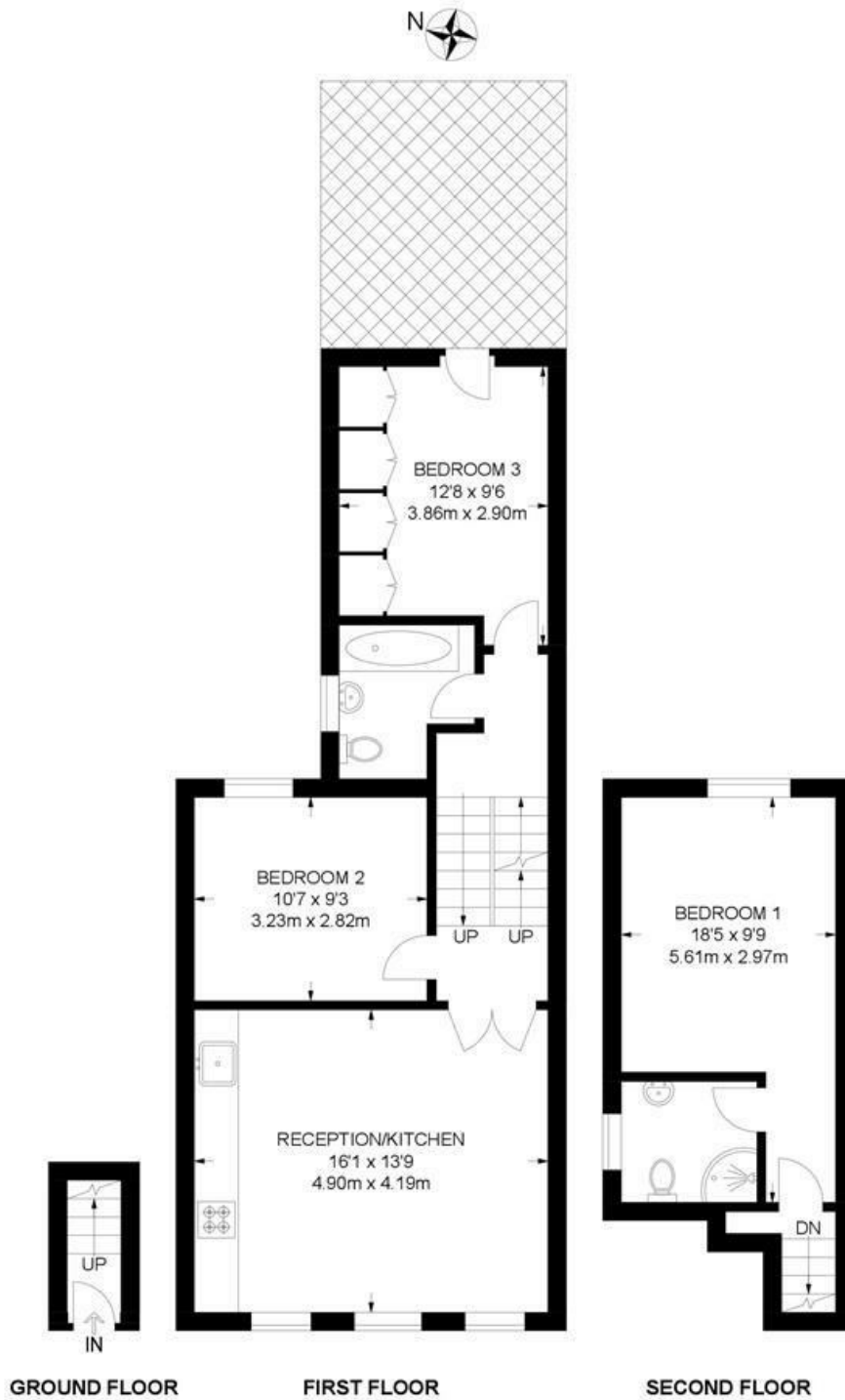




Solon Road, Brixton, SW2

Solon Road, SW2
3 Bedroom Flat

APPROXIMATE GROSS INTERNAL AREA: **773 SQ FT / 71.8 SQ M**



While we try our very best, floor plans are produced as a guide only and we take no responsibility for the precise accuracy with which any property is represented.

Solon Road, Brixton, SW2

