

St Luke's Avenue, Clapham, SW4

2 bedroom flat - conversion for sale

£575,000

Leasehold

Property Details

An elegant two bedroom flat with an expansive South-West facing garden, set within an attractive Victorian conversion in a desirable residential location. Recently refurbished to an exceptional standard, this beautifully finished home blends modern style with period charm, high ceilings and a layout ideal for both entertaining and privacy. At the heart of the home is a bright open-plan reception and kitchen, flooded with natural light through a striking bay window with plantation shutters. Glossy white cabinetry, integrated appliances and ample worktops make the kitchen both stylish and functional, with a dedicated dining area ideal for hosting. To the rear, a beautifully landscaped South-West facing garden offers a private retreat, perfect for al fresco dining and unwinding in the sun. Both bedrooms are peacefully positioned, with the principal bedroom enjoying dual-aspect sash windows and built-in wardrobes. The second bedroom opens to the garden and offers flexibility as a guest room or office. A stylish bathroom completes this charming home.

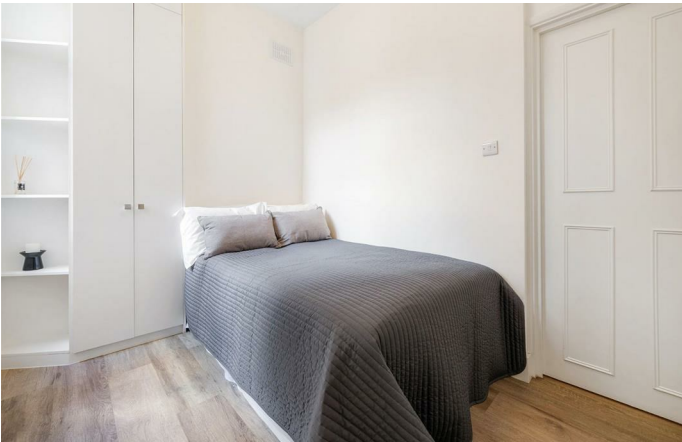
Features

- Two bedrooms
- South-West facing expansive garden
- Victorian conversion
- Newly refurbished to a high standard throughout
- Bright and stylish
- Clapham High Street just a two-minute stroll
- Northern Line and Overground both around a six-minute walk
- Clapham Common a leisurely eight-minute walk
- Chain-free

Council tax band C

EPC rating C (69)





St Luke's Avenue, Clapham, SW4

St Luke's Avenue, SW4

2 Bedroom Flat

APPROXIMATE GROSS INTERNAL AREA: 560 SQ FT / 52 SQ M



While we try our very best, floor plans are produced as a guide only and we take no responsibility for the precise accuracy with which any property is represented.

St Luke's Avenue, Clapham, SW4

