



**Brixton Hill, Brixton, SW2**

3 bedroom flat for sale

**£700,000**

Leasehold

## Property Details

An exceptional three double bedroom, two bathroom penthouse apartment with a large South-facing terrace boasting panoramic views, quietly set back from Brixton Hill within a secure and stylishly redeveloped 1970s building. Spanning over 1,070 square feet across two floors, the property offers a contemporary finish throughout. Flooded with natural light, the spectacular reception room sits atop the home, designed with clear zones for dining, lounging and cooking. A sleek high-spec kitchen with integrated appliances sits to one end, while dual-aspect floor-to-ceiling windows open directly onto the private decked terrace, a fantastic space for entertaining or unwinding with skyline views, including Battersea Power Station. Engineered wood flooring and underfloor heating ensure both style and practicality. Downstairs, three spacious double bedrooms feature fitted wardrobes and neutral carpets. A luxurious family bathroom offers both a bathtub and separate walk-in rain shower, complemented by an additional WC. Excellent insulation, modern lighting and useful storage complete this impressive home.

Council tax band E

EPC rating B (83)

## Features

- Penthouse apartment
- Three double bedrooms
- Two bathrooms
- South-facing terrace with panoramic views
- Stylish 1970s conversion
- Over 1,070 square feet split over two floors
- Local eateries and shops on the doorstep
- Central Brixton and Brockwell Park a short stroll away
- Victoria Line and Overground
- Chain-free







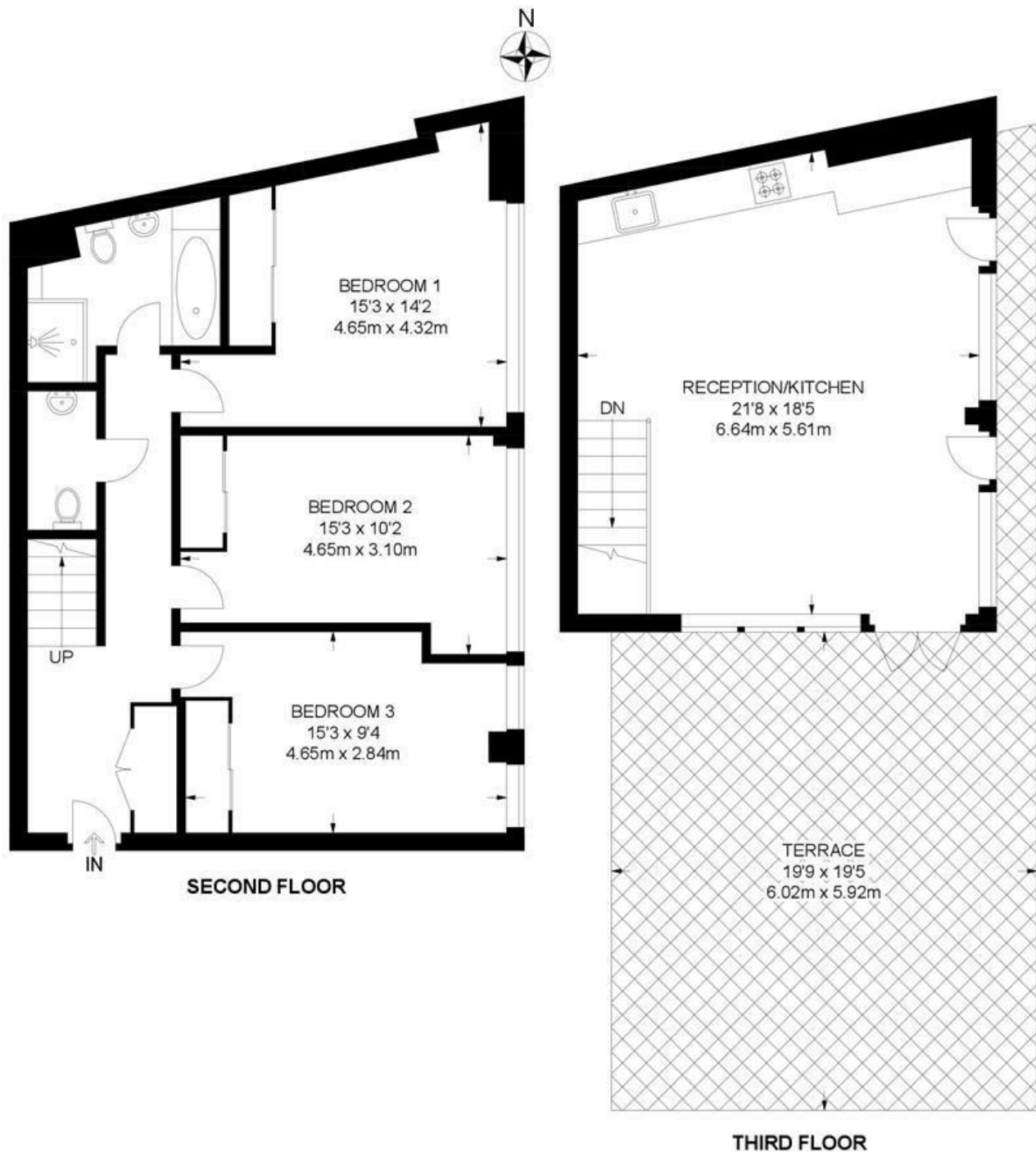


Brixton Hill, Brixton, SW2

## Brixton Hill, SW2

### 3 Bedroom Flat

APPROXIMATE GROSS INTERNAL AREA: 1071 SQ FT / 99.5 SQ M



While we try our very best, floor plans are produced as a guide only and we take no responsibility for the precise accuracy with which any property is represented.



Brixton Hill, Brixton, SW2

