



Spenser Road, Herne Hill, SE24

3 bedroom flat - conversion for sale

£750,000

Share of Freehold

Property Details

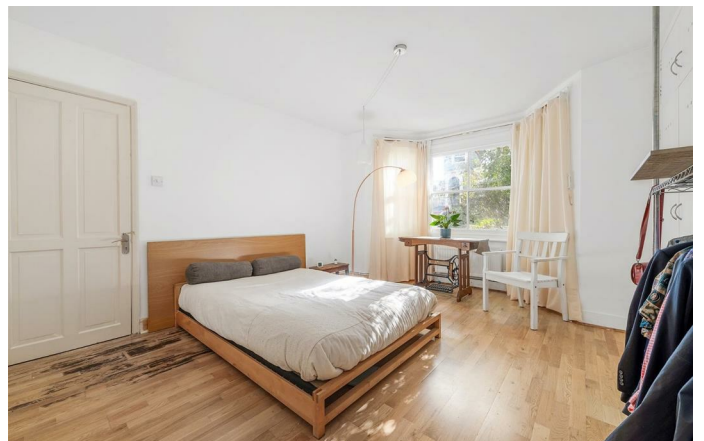
This characterful three-bedroom apartment boasts a private garden and is set within an attractive semi-detached Victorian conversion. The bright open-plan reception and kitchen area combines lounge, dining, and kitchen spaces, creating a versatile hub for modern living. The lounge features fitted shelving in the alcoves and chimney breast, while the contemporary kitchen offers sleek cabinetry and ample worktop space. Natural light floods the room through the glazed conservatory extension and French doors leading to the garden. The private garden blends charm and functionality, with a generous paved terrace, expansive lawn bordered by mature planting, and a substantial timber outbuilding with power, ideal as a home office, studio, or gym. A sheltered seating area beneath a pergola-style roof provides another inviting outdoor space. All three bedrooms are well-proportioned doubles, served by a neutral bathroom with a bath, overhead shower, sleek tiling, and chrome towel rail.

Features

- Three double bedrooms
- Private garden
- Semi-detached Victorian conversion
- Out-building with power
- Desirably located in Poet's Corner
- Brockwell Park moments away
- Herne Hill station in eight minutes
- Central Brixton a nine minute stroll
- Share of freehold
- Chain-free

Council tax band C

EPC rating C (70)



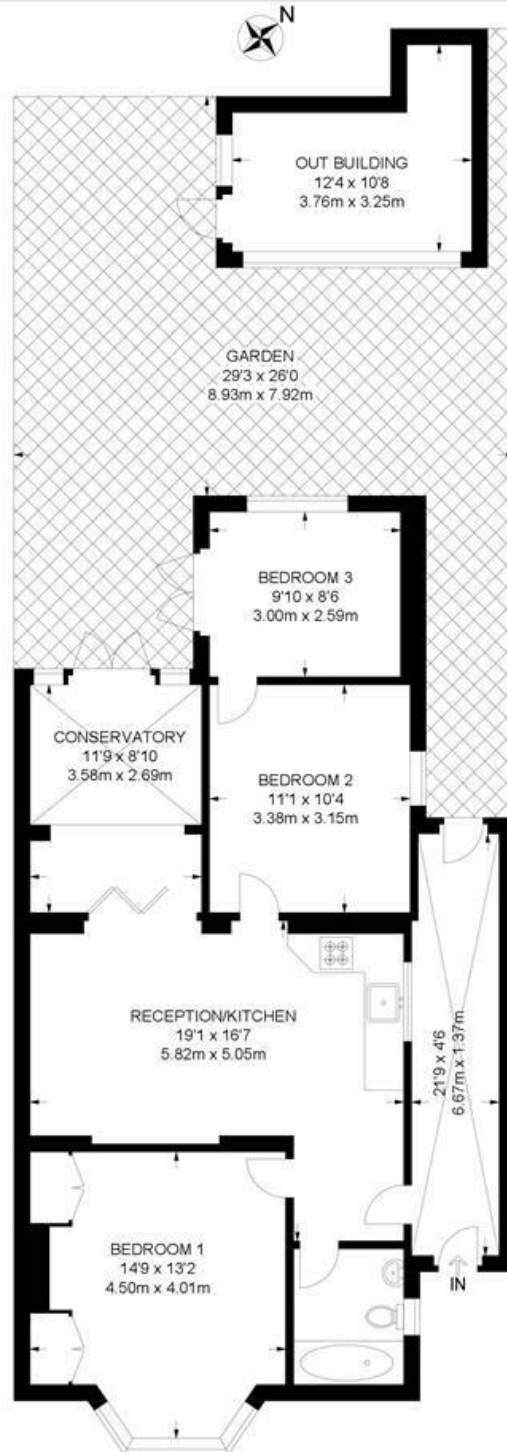


Spenser Road, Herne Hill, SE24

Spenser Road, SE24
3 Bedroom Flat

APPROXIMATE GROSS INTERNAL AREA: **915 SQ FT / 85 SQ M**

TOTAL AREA (INCLUDING OUT BUILDING): **1015 SQ FT / 94.3 SQ M**



LOWER GROUND FLOOR



While we try our very best, floor plans are produced as a guide only and we take no responsibility for the precise accuracy with which any property is represented.

Spenser Road, Herne Hill, SE24

