



Helix Road, Brixton, SW2

3 bedroom flat - conversion for sale

£675,000

Share of Freehold

Property Details

A spacious three bedroom flat which spans the first and second floors of a charming Victorian property on a tree-lined residential street. Just five minutes from Brockwell Park and close to local pubs, cafés, shops, and vibrant nightlife, it offers a perfect blend of calm and convenience. The bright reception room features sash windows, a decorative fireplace, built-in shelving, high ceilings, and ornate cornicing. The large, dine-in kitchen is fitted with shaker-style cabinetry and integrated appliances, with leafy views through sash windows, and plenty of space for a dining table —ideal for cooking and entertaining. Two of the bedrooms are generous doubles with feature fireplaces and built-in wardrobes, the principal is particularly appealing, bathed in natural light from an abundance of windows. The third offers the potential to repurpose to suit needs if all three bedrooms aren't required. The split-level layout separates the bedrooms upstairs from the social areas below. There is plenty of storage, including access to a loft.

Features

- Three bedrooms
- Victorian conversion
- Bright and airy throughout
- Almost 1,000 square feet split over multiple floors
- Access to substantial loft storage
- Brockwell Park a short stroll away
- Brixton centre around a ten-twelve minute walk
- Heme Hill a fifteen-minute walk
- Victoria Line, Thameslink and trains
- Share of freehold. Chain-free

Council tax band D

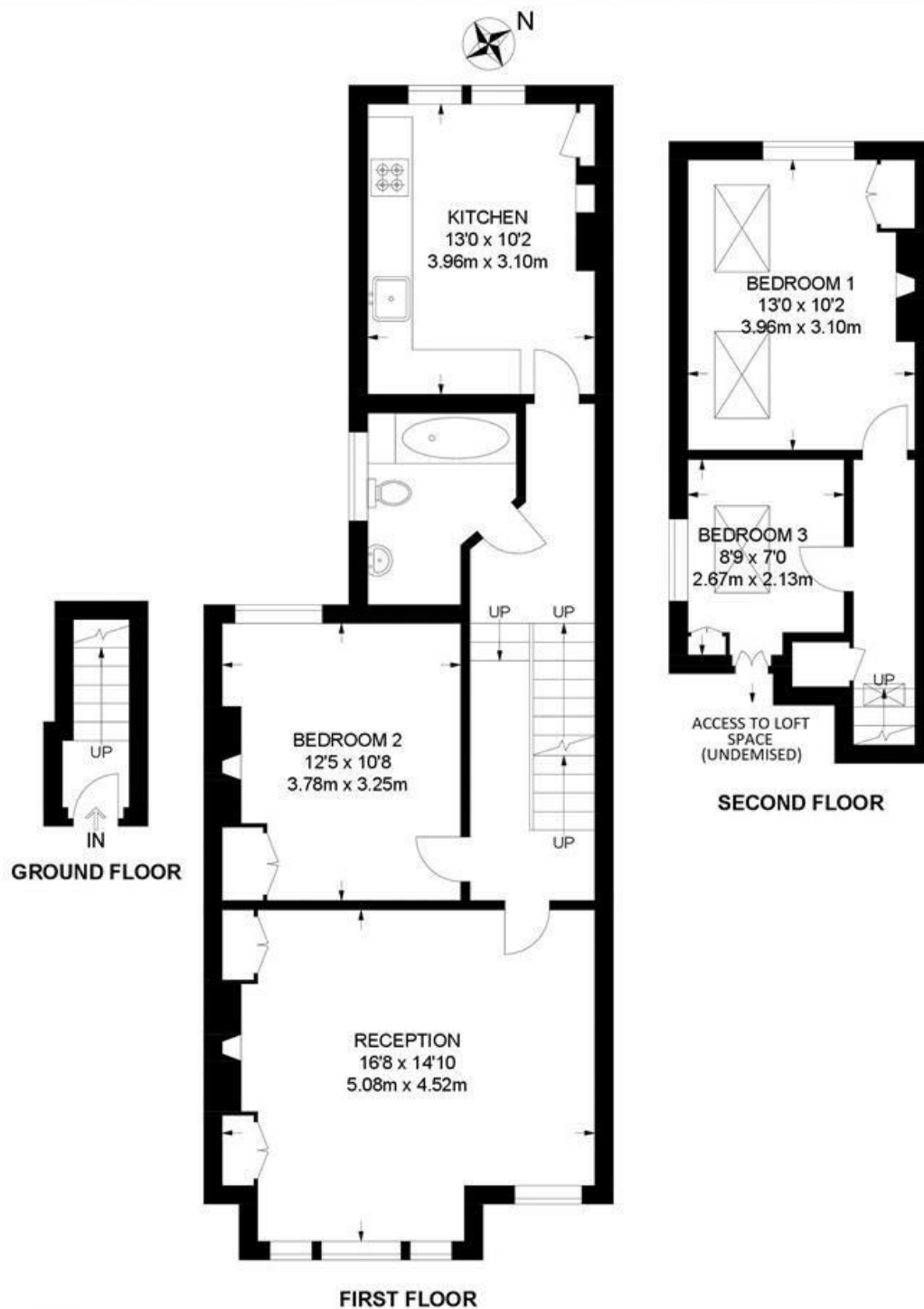
EPC rating D (58)



Helix Road, Brixton, SW2

Helix Road, SW2
3 Bedroom Flat

APPROXIMATE GROSS INTERNAL AREA: 986 SQ FT / 91.6 SQ M



While we try our very best, floor plans are produced as a guide only and we take no responsibility for the precise accuracy with which any property is represented.

Helix Road, Brixton, SW2

