

## Hayter Road, Brixton, SW2

2 bedroom flat to let

**£500 Per Week**

Part furnished

### Property Details

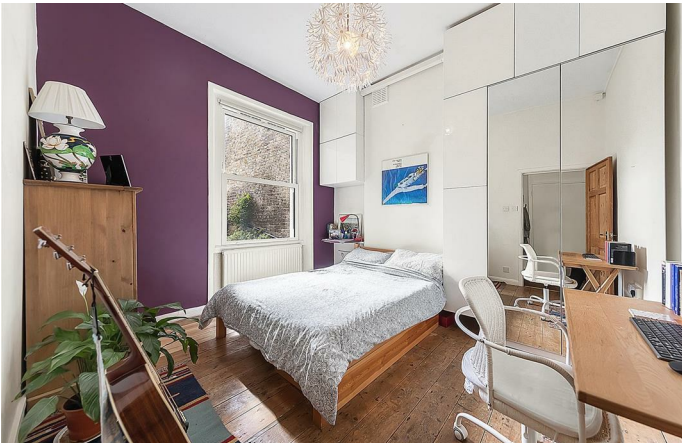
A brilliant, bright and open ground floor two bedroom conversion flat situated close to Brixton town centre. This beautiful flat offers an open plan kitchen/reception room, with a large bay window and original hardwood flooring throughout. The main double bedroom is spacious and the second room is ideally suited as a home study/guest room, a modern family bathroom. there is also a wonderful garden offering a tranquil escape from the buzz of the local surroundings. Brixton station is an nine-minute walk away with plenty of transport links into the city. with the likes of Electric Avenue, the Ritzy, Brixton Academy and many fantastic pubs, restaurants, weekend markets and more, Brixton is a great area for a social lifestyle.

### Features

- Two Bedrooms
- Plentiful storage
- Bright and airy throughout
- Characterful
- Close to Central Brixton
- Modern bathroom
- Private Garden
- Ideal for a couple or single professional

Council tax band D      EPC rating D (61)





Hayter Road, Brixton, SW2

## Hayter Road

# K

### 2 Bed Flat

Approx internal area:

**710 sqft 66 sqm**

While we do try our very best, floor plans are produced as a guide only and we take no responsibility for the precise accuracy with which any property is represented

Ground Floor





Hayter Road, Brixton, SW2

