



Hayter Road, Brixton, SW2

3 bedroom flat - conversion to let

£738 Per Week

Furnished

Property Details

Keating Estates are delighted to present this newly decorated spacious three double bedroom Victorian conversion flat, arranged over two generous levels in the heart of Brixton.

This beautifully proportioned flat has been newly decorated throughout and offers a bright and airy reception room, three generous double bedrooms, and a separate modern kitchen with ample storage and sleek, stylish finishes. The property further benefits from a contemporary bathroom, and high ceilings throughout, enhancing the sense of space and period charm.

Tucked away on Hayter Road, a quiet, sought-after residential street between Brixton and Clapham, this flat is ideally located for both vibrant urban living and a more tranquil, community-focused lifestyle.

Just a short seven-minute walk brings you to Brixton Station, the first stop on the Victoria Line, providing unrivalled access into central London. You're also moments from The Ritzy Cinema, Windrush Square, Brixton Village, and POP Brixton, offering a vast array of dining, shopping, and cultural options.

For green space lovers, Brockwell Park with its iconic 1930s Lido is within walking distance. A scenic

Features

- Three Bedroom
- Seperate reception room
- Split level
- Victorian conversion
- Prime location
- Newly decorated throughout

Council tax band D EPC rating C (70)



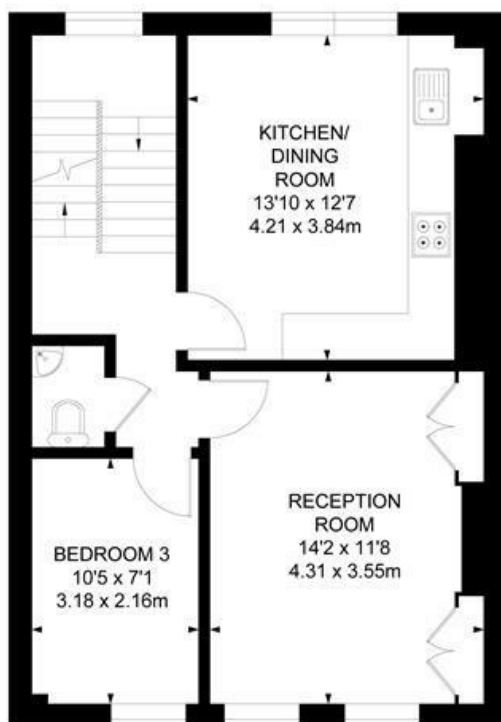
Hayter Road, Brixton, SW2

Hayter Road, SW2

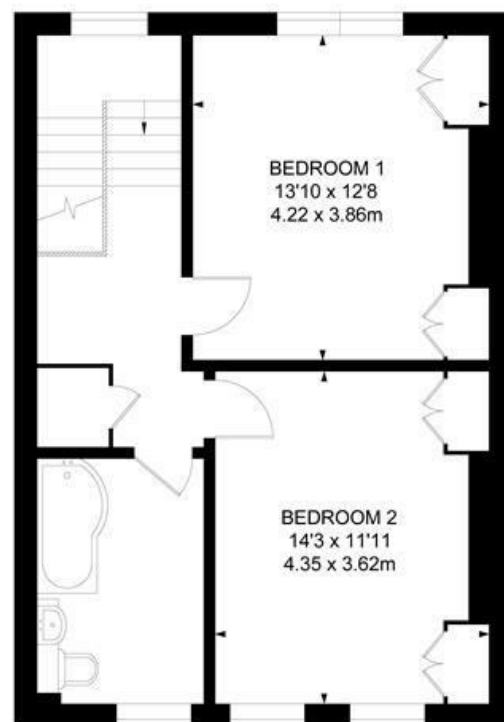
3 Bedroom Flat

APPROXIMATE GROSS INTERNAL AREA :

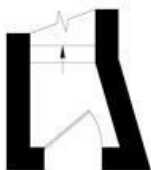
1111 SQ FT / 103.17 SQ M



FIRST FLOOR



SECOND FLOOR



GROUND FLOOR



While we try our very best, floor plans are produced as a guide only and we take no responsibility for the precise accuracy with which any property is represented.



Hayter Road, Brixton, SW2

