

Holmewood Gardens, Brixton, SW2

1 bedroom flat - conversion for sale

£360,000

Share of Freehold

Property Details

This beautifully presented one-bedroom flat occupies the upper floors of an attractive Victorian conversion on highly sought-after Holmewood Gardens. Entering from the first floor, a private internal staircase leads to a bright and welcoming top floor with a private ambience throughout. At the heart of the home, the open-plan reception and kitchen spans the full width of the building and is filled with natural light from multiple Velux windows. The kitchen is neatly positioned along the back wall, finished to a contemporary standard with a subway-tile splashback, integrated white goods and ample storage, ensuring a practical yet seamless aesthetic. Down a small flight of stairs is the spacious double bedroom, tucked peacefully at the rear of the property. An elegant sash window frames leafy views and generous proportions provide ample space for furnishings while remaining light and uncluttered. Adjacent, the fresh and neutral bathroom includes a shower over the bath plus access to useful eaves storage, ideal for keeping belongings neatly out of sight and maintaining a clutter-free home.

Council tax band C

EPC rating C (79)

Features

- One double bedroom
- End-of-terrace Victorian conversion
- Over 550 square feet
- Beautifully presented
- Desirable residential square surrounding a central garden
- Local shops, cafes and pubs on the doorstep
- Fifteen-minute walk, or swift bus to Brixton
- Nine-minute walk to Streatham Hill
- Excellent variety of transport links
- Share of freehold



Holmewood Gardens, Brixton, SW2

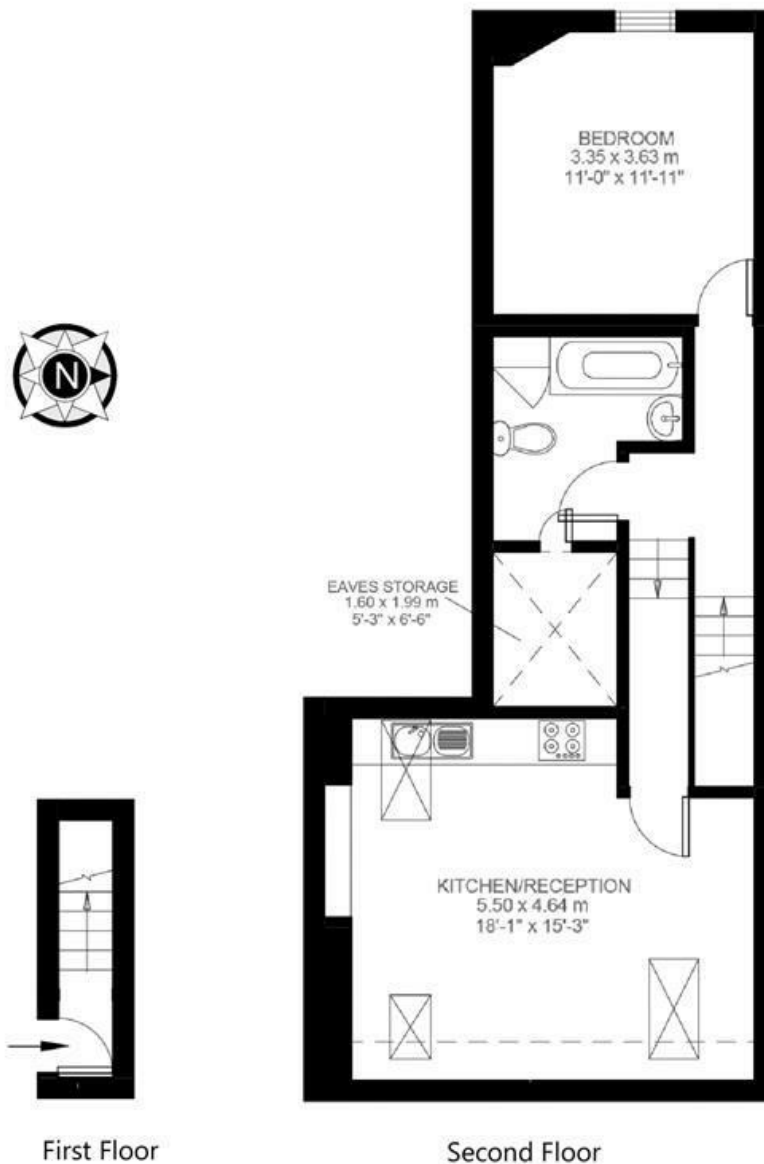
Holmewood Gardens, Brixton, SW2

1 Bedroom Flat

Approximate internal area: **558 sqft 52 sqm**

Approximate eaves storage: **34 sqft 3 sqm**

Approximate total internal area: **594 sqft 55 sqm**



While we do try our very best, floor plans are produced as a guide only and we take no responsibility for the precise accuracy with which any property is represented.

Holmewood Gardens, Brixton, SW2

