



Dalberg Road, Brixton, SW2

2 bedroom flat - conversion for sale

£630,000

Share of Freehold

Property Details

A beautifully presented two king-size bedroom garden flat with a share of freehold, set within a handsome Victorian property on a highly sought-after residential street. This charming home perfectly blends period character, modern style and private outdoor space. The heart of the property is the open-plan reception and kitchen, where a modern kitchen with island offers excellent storage and casual dining. The space flows naturally into a more formal dining area and through to a cosy lounge with leafy garden views. Multiple skylights and wide bi-folding doors flood the room with light, extending the living space into the private garden, ideal for entertaining or relaxing. The garden is designed for easy upkeep, with a patio, raised gravel area and flourishing potted plants, providing ample space for al fresco dining. Two well-proportioned king-size bedrooms sit to the front, the principal with bay window and plantation shutters, the second with courtyard access. A modern bathroom with separate bath and rain shower completes this stylish home, further enhanced by a cellar and thoughtful upgrades.

Council tax band C

EPC rating C (71)

Features

- Two king-size double bedrooms
- Large, open-plan living space
- Bi-fold doors onto private garden
- Victorian conversion with characterful features
- Bright and airy throughout
- Sought after location in the LTN
- Moments from Brockwell Park
- Nestled a short stroll to both Brixton and Herne Hill centres
- Start of the Victorian line in Brixton, with alternative central London rail access from Herne Hill
- Share of freehold



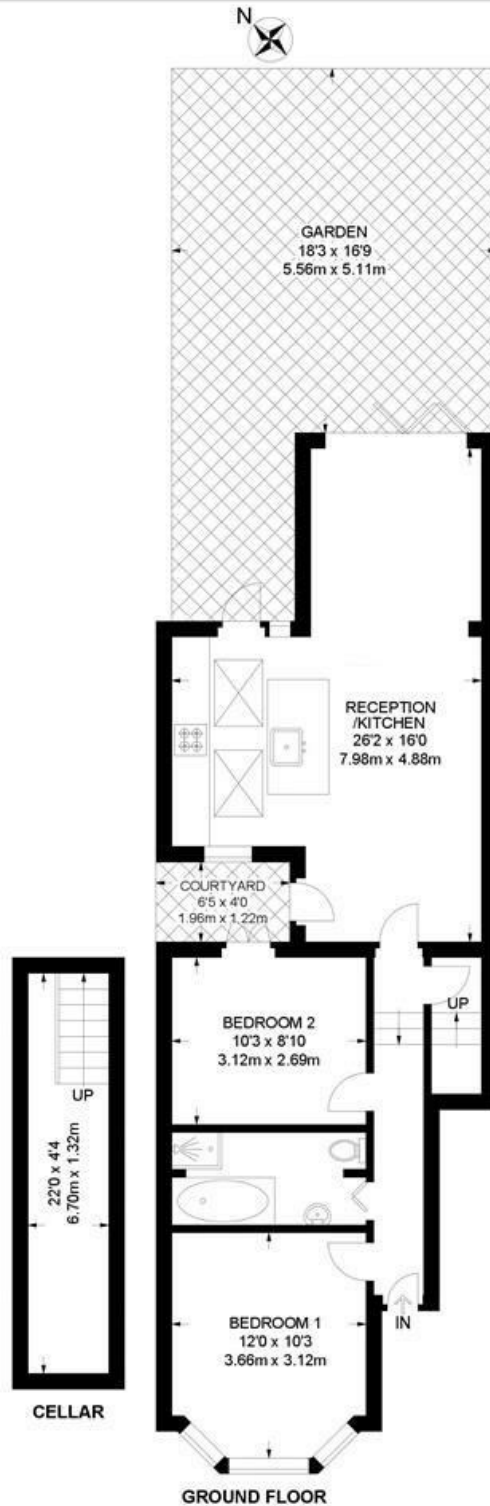


Dalberg Road, Brixton, SW2

Dalberg Road, SW2
2 Bedroom Flat

APPROXIMATE GROSS INTERNAL AREA WITH CELLAR: 735 SQ FT / 68.3 SQ M

APPROXIMATE GROSS INTERNAL AREA WITHOUT CELLAR: 641 SQ FT / 59.5 SQ M



While we try our very best, floor plans are produced as a guide only and we take no responsibility for the precise accuracy with which any property is represented.

Dalberg Road, Brixton, SW2

