



Helix Gardens, Brixton, SW2

2 bedroom flat - conversion to let

£530 Per Week

Furnished

Property Details

Keating Estates are proud to present this charming two bedroom garden flat, ideally located just a short distance from Brixton.

Set within a well-maintained building, this delightful home boasts a bright and spacious open-plan living area at the rear of the property, seamlessly opening onto a private garden perfect for entertaining or enjoying the warmer months.

The flat features two generous double bedrooms, both offering excellent proportions. The principal bedroom, situated at the front of the property, is particularly spacious, while the second bedroom benefits from serene views over the side return and rear garden.

A sleek, modern bathroom completes this well-appointed home, which effortlessly combines contemporary style with practical living.

Just a short walk brings you to Brixton Station, the first stop on the Victoria Line, providing unrivalled access into central London. You're also moments from The Ritzy Cinema, Windrush Square, Brixton Village, and POP Brixton, offering a vast array of dining, shopping, and cultural options.

Features

- Two Bed
- Open Plan
- Garden
- Prime location
- Close to Brockwell Park
- Close to Central Brixton

Council tax band C EPC rating E (54)



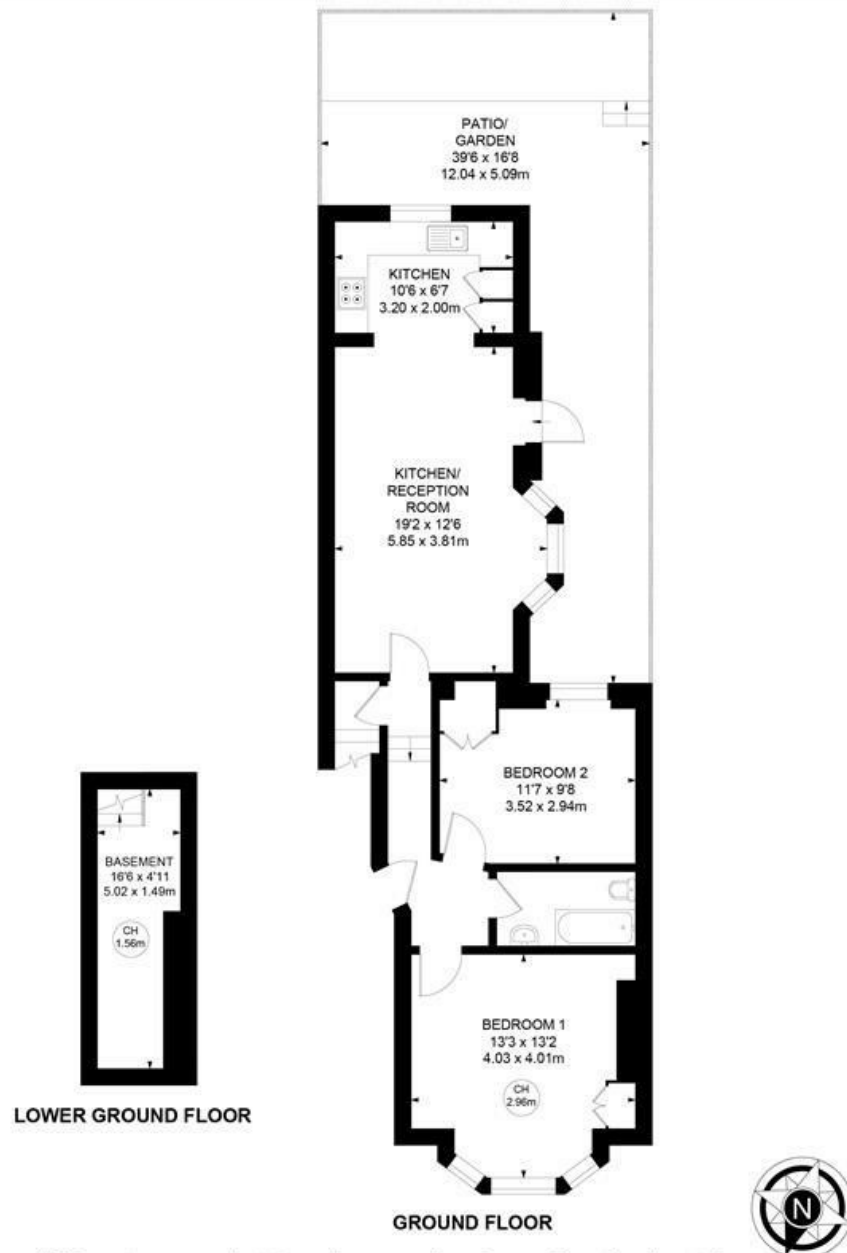
Helix Gardens, Brixton, SW2

Helix Gardens, SW2

2 Bedroom Flat

APPROXIMATE GROSS INTERNAL AREA :

758 SQ FT / 70.46 SQ M



While we try our very best, floor plans are produced as a guide only and we take no responsibility for the precise accuracy with which any property is represented.

Helix Gardens, Brixton, SW2

