

Bonham Road, Brixton, SW2

2 bedroom flat - purpose built for sale

£420,000

Leasehold

Property Details

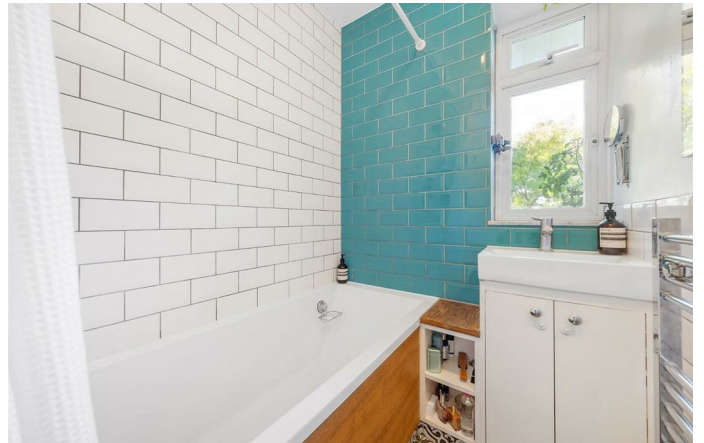
This two double bedroom, top-floor flat features a private terrace on a quiet, tree-lined residential road. With no neighbours above, it offers enhanced privacy and peace, further promoted by soundproofed floors. A welcoming hallway is finished in elegant herringbone flooring that sets a stylish tone and provides a warm first impression. The spacious reception room is bathed in natural light from wide windows and easily accommodates both lounge and dining furniture, with a door opening directly onto the private terrace, seamlessly blending indoor and outdoor living. The separate kitchen is thoughtfully arranged to maximise storage and workspace, with blue cabinetry, a handy storage cupboard, and a sink positioned beneath a window. Both bedrooms are genuine doubles, with the principal bedroom offering built-in wardrobes and abundant natural light. The bathroom features white and blue subway tiles, a full-sized bathtub with overhead shower, and a vanity unit with storage, with an adjacent WC completing the layout. A new boiler mid-2025 and a community feel in the building add further appeal.

Council tax band B

EPC rating C (71)

Features

- Two double bedrooms
- Top floor flat
- Private terrace with leafy views
- Bathroom with separate WC
- Seperte kitchen
- Bright and airy throughout
- Quiet residential street located between Brixton and Clapham High Streets
- Access to the Victoria and Northern tube lines
- Fourteen minute walk to Brockwell Park



Bonham Road, Brixton, SW2

Bonham Road, SW2
2 Bedroom Flat

APPROXIMATE GROSS INTERNAL AREA: 654 SQ FT / 60.7 SQ M



THIRD FLOOR



While we try our very best, floor plans are produced as a guide only and we take no responsibility for the precise accuracy with which any property is represented.

Bonham Road, Brixton, SW2

