

Holmewood Gardens, Brixton, SW2

4 bedroom house for sale

£1,175,000

Freehold

Property Details

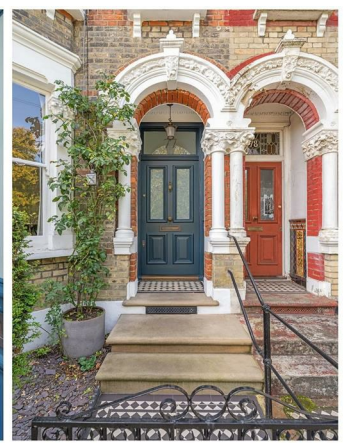
A handsome four double bedroom, two bathroom Victorian house with a private South-facing garden, set on the highly desirable Holmewood Gardens, a quiet residential street encircling a pretty garden square and known for its welcoming community. This grand home of over 2,000 square feet enjoys leafy views front and back, combining generous proportions, period charm and thoughtful modern touches. A mosaic-tiled path and stone steps lead to the elegant entrance, where original tiled flooring and high corniced ceilings impress. The double reception is packed with character, with bay window, working fireplaces, original floorboards and dividing doors allowing cosy or open-plan living, enhanced by stylish radiators and full-height doors to the garden. To the rear, the kitchen diner is a sociable hub with fluted cabinetry, plentiful storage and garden views. Upstairs, four spacious doubles boast fireplaces, wardrobes and leafy outlooks, serviced by two luxurious bathrooms, one with double vanity and walk-in shower, the other with bathtub beneath a skylight. A South-facing garden, cellar, outhouse and loft complete this exceptional family home, with precedent set for future extension STNP.

Council tax band F

EPC rating C (69)

Features

- Four double bedrooms
- Two bathrooms
- South-facing garden
- Freehold Victorian house
- Desirable residential square surrounding a park
- Local shops, cafes, pubs and schools
- Fifteen-minute walk, or swift bus to Brixton
- Nine-minute walk to Streatham Hill
- Excellent variety of transport links
- Chain-free





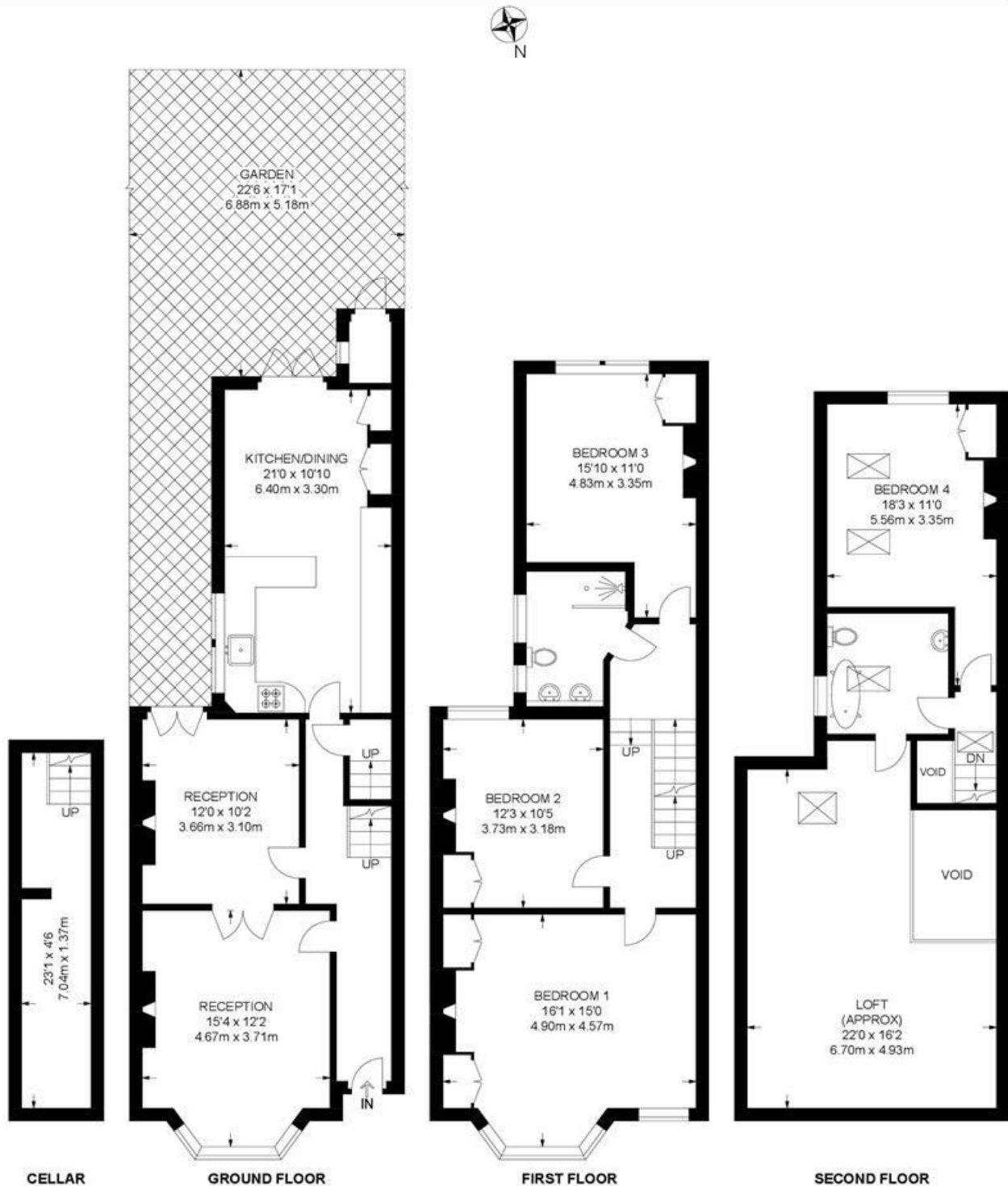
Holmewood Gardens, Brixton, SW2

Holmewood Gardens, SW2

4 Bedroom House

APPROXIMATE GROSS INTERNAL AREA WITH CELLAR: **2060 SQ FT / 191.4 SQ M**

APPROXIMATE GROSS INTERNAL AREA WITHOUT CELLAR: **1956 SQ FT / 181.7 SQ M**



While we try our very best, floor plans are produced as a guide only and we take no responsibility for the precise accuracy with which any property is represented.

Holmewood Gardens, Brixton, SW2

