

Milkwood Road, Herne Hill, SE24

2 bedroom maisonette for sale

£580,000

Leasehold

Property Details

This wonderful two double bedroom purpose-built maisonette boasts a private garden and light-filled, open-plan living, with an expansive reception and kitchen/dining area designed for both everyday life and entertaining. The kitchen features white gloss handleless cabinetry, a bold orange splashback, sleek worktops and integrated appliances including a Neff oven. Two sets of bi-fold doors open directly onto the garden, creating a seamless indoor-outdoor flow, enhanced by an electric-powered awning providing valuable shade in hot weather. The principal bedroom offers a wall of built-in storage and patio doors leading to the garden, while the second is a generous double with direct garden access, ideal as a guest room or home office should both bedrooms not be required. The bathroom features a contemporary walk-in shower and separate bath finished in a neutral style. Continuous flooring runs throughout the maisonette, enhancing the sense of space, while the patio-walled private garden, framed by brick walls and mature greenery, provides a peaceful outdoor retreat perfect for dining, entertaining or relaxing. Excellent private and public sector schools are nearby, including Jessop Primary and The Charter School, North Dulwich, both rated Outstanding.

Features

- Two double bedrooms
- Large private garden
- Private entrance
- Over 800 square feet of internal living space
- Bright and airy throughout
- Open plan kitchen/reception
- Excellent schools nearby including Jessop Primary and The Charter School North Dulwich
- Brockwell Park a short five-minute stroll away
- Central Brixton nearby
- Short two-minute walk to Herne Hill Station

Council tax band D

EPC rating D (68)

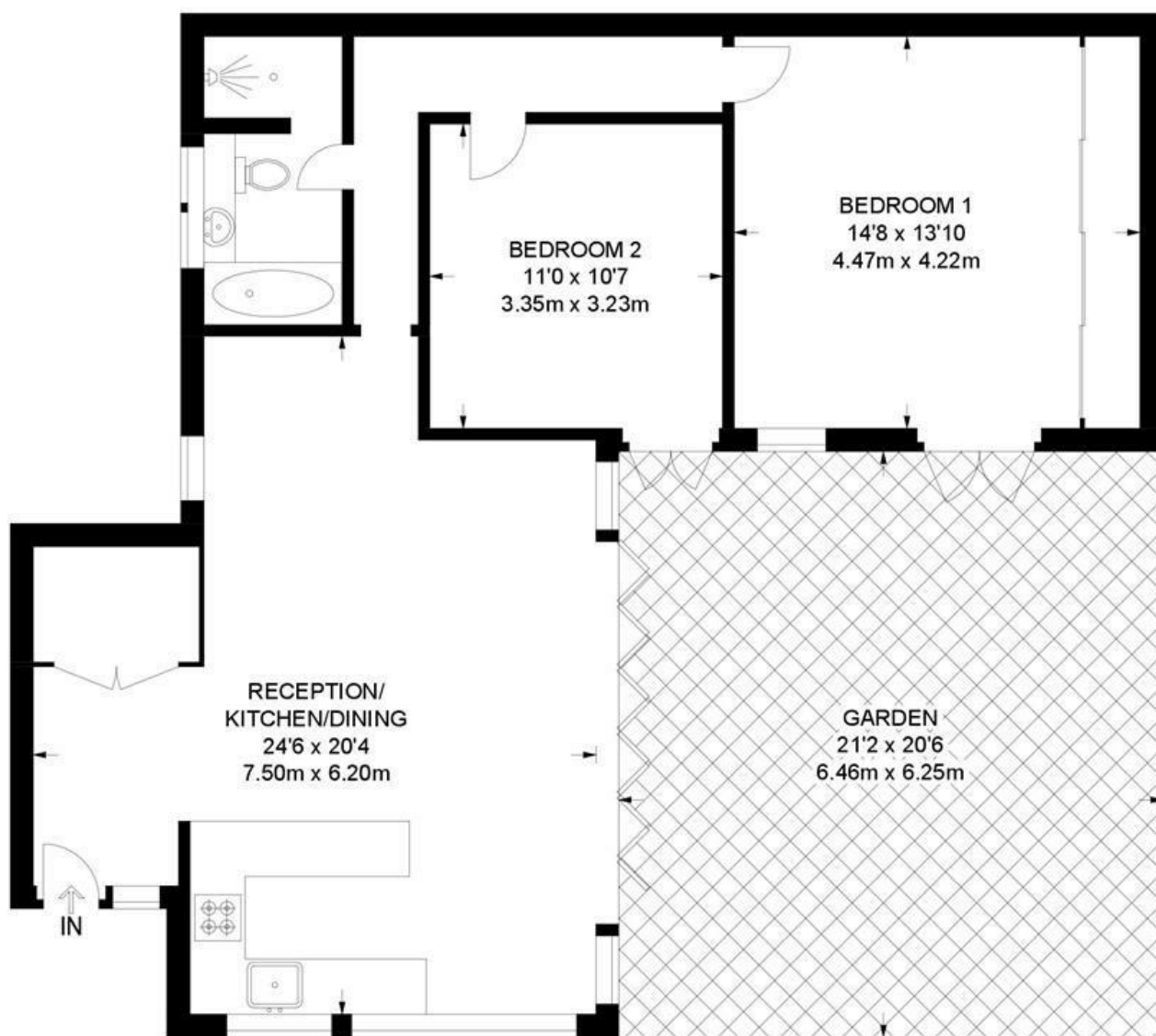




Milkwood Road, Herne Hill, SE24

Milkwood Road, SE24
2 Bedroom Flat

APPROXIMATE GROSS INTERNAL AREA: **858 SQ FT / 79.7 SQ M**



GROUND FLOOR



While we try our very best, floor plans are produced as a guide only and we take no responsibility for the precise accuracy with which any property is represented.

Milkwood Road, Herne Hill, SE24

